

## Introduction:

This is a [solar charge controller 40A ~60A](#) that have automatic max. power point tracking function with high efficiency that almost 30%~60% higher than traditional charge controller. It also features the functions of system voltage auto recognition, wide rang of PV input ,charge for all kinds of battery,automatic discharge control,RS 232 / LAN communication function and so on. It is very high-end product for solar market.







Feature:

- 1.MPPT charge mode,conversion efficiency upto 99%
- 2.12V/24V/48V system auto recognize;
- 3.Wide range of PV input with max. is DC150V .
- 4.Unlimited parallel connection
- 5.Journal function , Save function set ,Date ,time ,Generating capacity and so on .
- 6.Charge mode: three stages (fast charge ,constant charge ,floating charge) .It prolongs service life of the batteries .
- 7.Discharge mode: ON/OFF mode, double time control mode,PV voltage control mode ,PV voltage+time delay mode and so on .
- 8.Recommended battery types: sealed lead acid, vented, gel, NiCd battery. Other types of the batteries

can also be defined.

9. Most information could be provided by LCD and LED like: model no., PV input voltage, battery type, battery voltage, charging current, charging power, working status and so on. Also customer's information like company name, website and logo can be added into Solar Eagle software.

10. RS232 and LAN communication port. IP and Gate address could be user define it satisfy global area. And communication protocol can be provided to help customer manage all information.

11. The upper computer software is displayed in 11 languages, it could show work status and set parameters of the discharge system.

12. With intelligent design, the device can be upgraded online lifelong.

13. Adopting the well-known brand components, the devices can suffer the temperature not less than 105°C. The service life is designed to use for 10 years in theory.

14. Compliance with the 2002/95/EC environment protecting demand, doesn't include the Cadmium, hydride and fluoride etc material

15. Equipment integrity: controller + CD-ROM (microcomputer software) + communication wire + temperature sensing wire + Anderson terminals;

16. CE, ROHS certifications approved.

## Parameter:

Model:I-P-SMART2-40A/50A/60A -series		40A	50A	60A	
Charge Mode	Maximum Power Point Tracking				
Method	3 stages: fast charge(MPPT),constant voltage, floating charge				
System Type	DC12V/24V/48V	Automatic recognition			
System Voltage	12V system	DC9V~DC15V			
	24V system	DC18V~DC30V			
	48Vsystem	DC36V~DC60V			
Soft Start Time	12V/24V/48Vsystem	≤10S			
Dynamic Response	12V/24V/48Vsystem	500us			
Recovery Time					
Conversion Efficiency	12V/24V/48Vsystem	≥96.5%,≤99%			
PV Modules Utilization Rate	12V/24V/48Vsystem	≥99%			
Input Characteristics					
MPPT Working Voltage and Range	12V system	DC18V~DC150V			
	24V system	DC34~DC150V			
	48V system	DC65~DC150V			
Low Voltage Input Protection Point	12V system	DC16V			
	24V system	DC30V			
	48V system	DC60V			
Low Voltage Input Recovery Point	12V system	DC22V			
	24V system	DC34V			
	48V system	DC65V			
Max DC Voltage	12V/24V/48V system	DC160V			
Input Overvoltage Protection Point	12V/24V/48V system	DC150			
Input Overvoltage Recovery Point	12V/24V/48V system	DC145V			
Max. PV Power	12V system	570W	700W	900W	
	24V system	1130W	1400W	1700W	
	48V system	2270W	2800W	3400W	
Output Characteristics					
Selectable Battery Types (Default type is GEL battery)	12V/24V/48V system	Sealed lead acid, vented, Gel, NiCd battery (Other types of the batteries also can be defined)			
Constant Voltage	12V/24V/48V system	Please check the charge voltage according to the battery type form.			
Floating Charge Voltage	12V/24V/48V system				
Over Charge Protection Voltage	12V system				14.6V
	24V system				29.2V
	48V system				58.4V
Rated Output Current	12V/24V/48V system	40A	50A	60A	

Current-limiting Protection	12V/24V/48V system	44A	55A	66A
Rate charge current	12V/24V/48V System	40A	50A	60A
Temperature Factor	12V/24V/48V system	±0.02%/°C		
Temperature Compensation	12V/24V/48V system	14.2V-(The highest temperature-25°C)*0.3		
Output Ripples(peak)	12V/24V/48V system	200mV		
Output Voltage Stability Precision	12V/24V/48V system	≤±1.5%		
Charge voltage Peak-Peak Ripple	12V/24V/48V System	200mV		
Charger voltage accuracy	12V/24V/48V System	≤±1.5%		
Discharge characteristic				
Setting Control	Controller or LAN			
Max discharge current	12V/24V/48V System	40A		
Discharge protection	12V/24V/48V System	fuse 30A*2		
Double-time control	12V/24V/48V System	On in morning ,off in morning / On in night ,off in night		
ON / OFF mode	12V/24V/48V System	ON / OFF		
PV voltage control	12V/24V/48V System	PV voltage on[]PV voltage off		
PV voltage / time delay control	12V/24V/48V System	PV voltage on[]time delay off		
Discharge voltage protection	12V/24V/48V System	Output off when it under setting voltage; Factory set is 10.5 .( Note : set based on 1 battery )		
Communication Features				
RS232 Communication	12V/24V/48V System	Chose COM communication		
LAN Communication	12V/24V/48V System	Set IP and Gate address for controller and solar eagle ;Then chose TCP communication		
Protection				
Input Low Voltage Protection		Check the input characteristics		
Input Overvoltage Protection		Check the input characteristics		
Input Polarity Reversal Protection		yes		
Output Overvoltage Protection		Check the output characteristics		
Output Polarity Reversal Protection		yes		
Short-circuit Protection		Recover after eliminating the Short-circuit fault, no problem for long term Short-circuit		
Temperature Protection		95°C		
Temperature protection		Above 85°C,decrease the output power, decrease 3A per degree.		
Other Parameters				
Noise		≤40dB		
Thermal methods		Forced air cooling, fan speed rate regulated by temperature, when inner temperature is too low, fan ran slowly or stop; when controller stop working, fan also stop ran.		
Components		World brand raw materials. Compliance with EU standards. All rated temperature of electrolytic capacitors not less than 105°C		
Smell		No peculiar smell and toxic substances.		
Environment Protection		Meet the 2002/95/EC,no cadmium hydride and fluoride		
Physical				
Measurement DxWxH (mm)		270*185*90		
N.G(kg)		3		
G.N(kg)		3.6		
Color		Blue/Green (optional)		
Safety		CE, RoHS, PSE,FCC		
EMC		EN61000		
Type of Mechanical Protection		IP21		
Environment				
Humidity		0~90%RH ( no condense)		
Altitude		0~3000m		
Operating Temperature		-20°C ~ +40°C		
Storage Temperature		-40°C ~ +75°C		
Atmospheric Pressure		70~106kPa		



Blue



Green

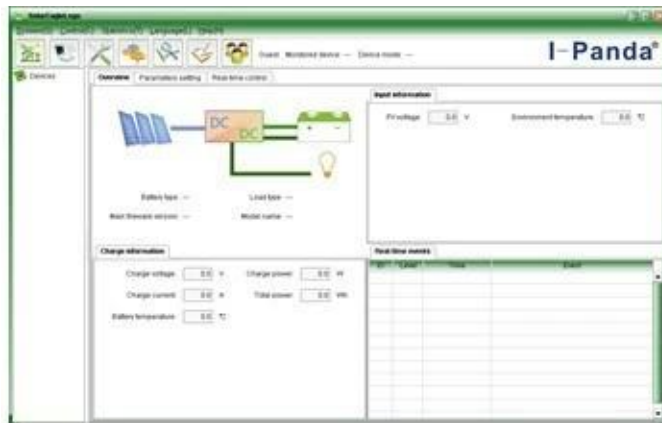


Upper Computer

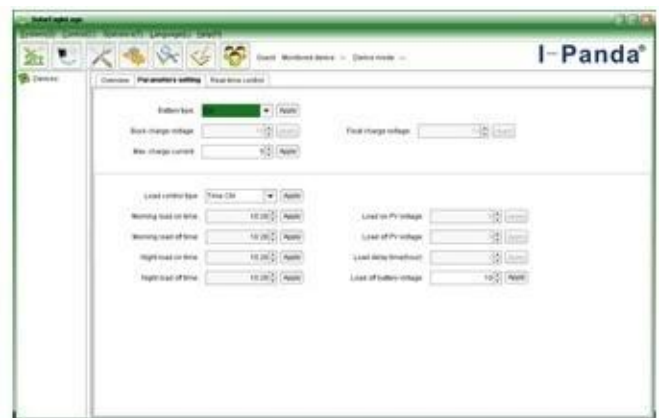


Package

## Upper Computer Software and Test Software



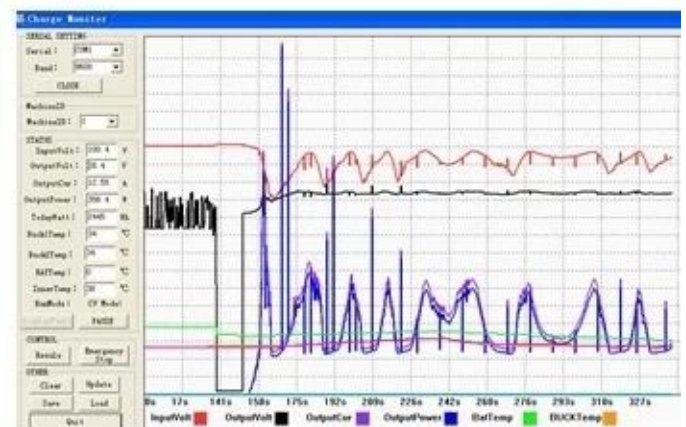
The interface of upper computer software working state



The interface of upper computer software parameter setting state



Upper computer software on/off interface and generating capacity record clean interface



The interface of test software working state

## MPPT Connection



## Certificates

[ISO2008](#)

[ISO2004](#)

[CE](#)

[FCC](#)

[ROHS](#)

## Company





