

Introduction:

This is a [solar charge controller 40A ~60A](#) that have automatic max. power point tracking function with high efficiency that almost 30%~60% higher than traditional charge controller. It also features the functions of system voltage auto recognition, wide rang of PV input ,charge for all kinds of battery,automatic discharge control,RS 232 / LAN communication function and so on. It is very high-end product for solar market.







Feature:

- 1.MPPT charge mode,conversion efficiency upto 99%
- 2.12V/24V/48V system auto recognize;
- 3.Wide range of PV input with max. is DC150V .
- 4.Unlimited parallel connection
- 5.Journal function , Save function set ,Date ,time ,Generating capacity and so on .
- 6.Charge mode: three stages (fast charge ,constant charge ,floating charge) .It prolongs service life of the batteries .

7. Discharge mode: ON/OFF mode, double time control mode, PV voltage control mode, PV voltage+time delay mode and so on.

8. Recommended battery types: sealed lead acid, vented, gel, NiCd battery. Other types of the batteries can also be defined.

9. Most information could be provided by LCD and LED like: model no., PV input voltage, battery type, battery voltage, charging current, charging power, working status and so on. Also customer's information like company name, website and logo can be added into Solar Eagle software.

10. RS232 and LAN communication port. IP and Gate address could be user defined to satisfy global area. And communication protocol can be provided to help customer manage all information.

11. The upper computer software is displayed in 11 languages, it could show work status and set parameters of the discharge system.

12. With intelligent design, the device can be upgraded online lifelong.

13. Adopting the well-known brand components, the devices can suffer the temperature not less than 105°C. The service life is designed to use for 10 years in theory.

14. Compliance with the 2002/95/EC environment protecting demand, doesn't include the Cadmium, hydride and fluoride etc material

15. Equipment integrity: controller + CD-ROM (microcomputer software) + communication wire + temperature sensing wire + Anderson terminals;

16. CE, ROHS certifications approved.

Technical Specification:

MODEL: I-P-SMART2-20A/25A/30A - SERIES		20A	25A	30A
Charge Mode		Maximum Power Point Tracking		
Discharge Mode		Intelligent control		
System Type		12V 24V 48V Automatic recognition		
Soft Start Time		≤10S		
Dynamic Response Recovery Time		500us		
Conversion Efficiency		≥96.5%, ≤99%		
PV Modules Utilization Rate		≥99%		
INPUT CHARACTERISTICS				
MPPT Working Voltage and Range	12V system	DC18V~DC150V		
	24V system	DC34~DC150V		
	48V system	DC65~DC150V		
Low Voltage Input Protection Point	12V system	DC16V		
	24V system	DC30V		
	48V system	DC60V		
Low Voltage Input Recovery Point	12V system	DC22V		
	24V system	DC34V		
	48V system	DC65V		
Max. DC Voltage		DC160V		
Input Overvoltage Protection Point		DC150		
Input Overvoltage Recovery Point		DC145V		
Max. PV Power	12V system	286W	357W	429W
	24V system	572W	715W	858W
	48V system	1144W	1430W	1716W

CHARGE CHARACTERISTICS			
Selectable Battery Types	Sealed lead acid, vented, Gel, NiCd battery(Default type is GEL battery)		
Other types of Battery Setting	Constant charge	User-defined constant/floating charge voltage range between DC10V~DC15 (based on 1 pcs 12V battery)	
	Floating charge		
Battery Type Setting	12V/24V/48V SYS	Controller and upper monitor	
Charge Type	12V/24V/48V SYS	Three Stages :Fast charge/Constant charge/Floating charge	
Rated Output Current	20A	25A	30A
Current-limiting Protection	25A	30A	35A
Temperature Factor	±0.02%/°C		
Temperature Compensation	14.2V-(The highest temperature-25°C)*0.3		
Output Ripples(peak)	200mV		
Output Voltage Stability Precision	≤±1.5%		
Charge voltage Peak-Peak Ripple	200mV		
Charger voltage accuracy	≤±1.5%		
DISCHARGE CHARACTERISTICS			
Setting Control	Controller or LAN		
Max discharge current	30A		
Max discharge power	420W	840W	1680W
Discharge protection	fuse 40A*2		
Double-time control	On in morning ,off in morning / On in night ,off in night		
ON / OFF mode	ON / OFF		
PV voltage control	PV voltage on,PV voltage off		
PV voltage / time delay control	PV voltage on,time delay off		
Discharge voltage protection	Output off when it under setting voltage; Factory set is 10.5 .(Note : set based on 1 battery)		
COMMUNICATION PORT			
RS232 Communication	Chose COM communication		
LAN Communication	Set IP and Gate address for controller and solar eagle ;Then chose TCP communication		
PROTECTIONS			
Input Low Voltage Protection	Check the in/output characteristics		
Input Overvoltage Protection			
Input Polarity Reversal Protection			
Output Overvoltage Protection			
Output Polarity Reversal Protection	Recover after eliminating the Short-circuit fault, no problem for long term Short-circuit		
Short-circuit Protection			
Temperature Protection	95°C		
Temperature protection	Above 85°C,decrease the output power, decrease 3A per degree.		
OTHER PARAMETERS			
Noise	≤40dB		
Thermal methods	Forced air cooling, fan speed rate regulated by temperature, when inner temperature is too low, fan ran slowly or stop; when controller stop working, fan also stop ran.		
Environment Protection	World brand raw materials. Compliance with EU standards. Meet the 2002/95/EC without cadmium hydride, fluoride, peculiar smell and toxic substances.All rated temperature of electrolytic capacitors not less than 105°C		
PHYSICAL			
Measurement DxWxH (mm)	270*185*90		
N.G(kg)	2.1		
G.N(kg)	2.4		
Color	Blue/Green (optional)		
Safety	CE, RoHS, PSE,FCC		
EMC	EN61000		
Type of Mechanical Protection	IP21		
ENVIRONMENT			
Humidity	0~90%RH (no condense)		
Altitude	0~3000m		

Operating Temperature	-20°C ~ +40°C
Storage Temperature	-40°C ~ +75°C
Atmospheric Pressure	70~106kPa



Blue



Green



Upper Computer

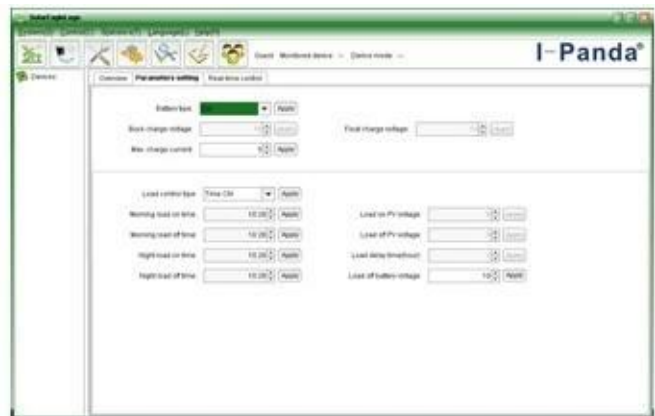


Package

Upper Computer Software and Test Software



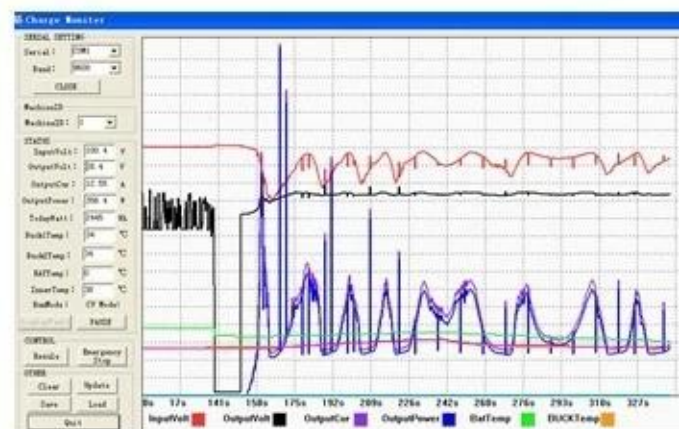
The interface of upper computer software working state



The interface of upper computer software parameter setting state



Upper computer software on/off interface and generating capacity record clean interface



The interface of test software working state

MPPT Connection



Certificates

[ISO2008](#)

[ISO2004](#)

[CE](#)

[FCC](#)

[ROHS](#)

Company





