

## Feature:

- 1.MPPT charge mode,conversion efficiency up to 99%,can save 30%~60% of the power than traditional controller.
- 2.With high efficient MPPT operation scheme and adopting TI28035 chip,make the Solar panels utilization rate up to 99%. Intelligent design,the device can be upgraded online,customers enjoy the lifelong upgrade service.
- 4.Compliance with the 2002/95/EC environment protecting demand, doesn't include the Cadmium, hydride and fluoride
- 5.Adopting the well-known brand components,the devices can suffer the temperature not less than 105°C.The service life is designed to extend to 10 years in theory.
- 6.Charge mode: three stages (fast charge,constant charge,floating charge)
- 7.12V/24V/48V system auto recognize for easy control.
- 8.Nominal maximum solar input is DC 150V
- 9.Connected Battery Type choosing: Sealed lead acid, vented, Gel, NiCd battery. Other types of the batteries can also be defined.
10. LCD and LED show all kinds of parameter like products model, PV input voltage,battery voltage,charge current,charge power,work condition,and also can add customers'company name and website.
11. Communication Port.RS232 communication can provide communication protocol, This make the unified and integrated management more convenient to customers.
12. With providing a Microsoft by connecting with PC that can show the working state and all parameters in 7 languages.
13. Extensible LAN(local area network) remote control.
- 14.Equipment integrity: controller+CD-ROM(microcomputer software) + communication wire+manual+Anderson terminals;
- 15.CE,ROHS,FCC,PSE certifications approved.The device also can support to pass the other certifications.
16. 2 years warranty. And 3~10 years extended warranty service also can be provided.

## Parameter:

Model:I-P-SMART1-DC12V/24V/48V-series		40A		50A		60A	
Charge Mode		Maximum Power Point Tracking					
Method		3 stages: fast charge(MPPT),constant voltage,floating charge					
System Type		DC12V/24V/48V Automatic recognition					
System Voltage		12V system	DC9V~DC15V				
		24V system	DC18V~DC30V				
		48Vsystem	DC36V~DC60V				
Soft Start Time		12V/24V/48Vsystem	≤10S				
Dynamic Response Recovery Time		12V/24V/48Vsystem	500us				
Conversion Efficiency		12V/24V/48Vsystem	≥96.5%,≤99%				
PV Modules Utilization Rate		12V/24V/48Vsystem	≥99%				
Input Characteristics							
MPPT Working Voltage and Range		12V system	DC18V~DC150V				
		24V system	DC34~DC150V				
		48V system	DC65~DC150V				
Low Voltage Input Protection Point		12V system	DC16V				
		24V system	DC30V				
		48V system	DC60V				
Low Voltage Input Recovery Point		12V system	DC22V				
		24V system	DC34V				
		48V system	DC65V				
Max DC Voltage		12V/24V/48V system	DC160V				
Input Overvoltage Protection Point		12V/24V/48V system	DC150V				
Input Overvoltage Recovery Point		12V/24V/48V system	DC145V				
Max. PV Power		12V system	560W	700W	900W		
		24V system	1120W	1400W	1700W		
		48V system	2240W	2800W	3400W		
Output Characteristics							
Selectable Battery Types (Default type is GEL battery)		12V/24V/48Vsystem	Sealed lead acid, vented, Gel, NiCd battery (Other types of the batteries also can be defined)				
Constant Voltage		12V/24V/48V system	Please check the charge voltage according to the battery type form.				
Floating Charge Voltage		12V/24V/48V system					
Over Charge Protection Voltage		12V system	14.6V				
		24V system	29.2V				
		48V system	58.4V				
Rated Output Current		12V/24V/48V system	40A	50A	60A		
Current-limiting Protection		12V/24V/48V system	44A	55A	66A		
Temperature Factor		12V/24V/48V system	±0.02%/°C				

Temperature Compensation	12V/24V/48V system	14.2V-(The highest temperature-25℃)*0.3
Output Ripples(peak)	12V/24V/48V system	200mV
Output Voltage Stability Precision	12V/24V/48V system	≤±1.5%
Display		
LCD display	Input,output parameter and output power etc (check the LCD display instruction)	
LED display	3 LEDs indicates:Fault indicate light,charge indicate light,power source indicate light(check the LED instruction)	
Software Control through PC(communication port)	RS232 (matching) or LAN(optional)	
Protection		
Input Low Voltage Protection	Check the input characteristics	
Input Overvoltage Protection	Check the input characteristics	
Input Polarity Reversal Protection	yes	
Output Overvoltage Protection	Check the output characteristics	
Output Polarity Reversal Protection	yes	
Short-circuit Protection	Recover after eliminating the Short-circuit fault,no problem for long term Short-circuit	
Temperature Protection	95℃	
Temperature protection	Above 85℃,decrease the output power,decrease 3A per degree.	
Other Parameters		
Noise	≤40dB	
Thermal methods	Forced air cooling,fan speed rate regulated by temperature,when inner temperature is too low,fan ran slowly or stop;when controller stop working,fan also stop ran.	
Components	World brand raw materials. Compliance with EU standards.All rated temperature of electrolytic capacitors not less than 105℃	
Smell	No peculiar smell and and toxic substances.	
Environment Protection	Meet the 2002/95/EC,no cadmium hydride and fluoride	
Physical		
Measurement D x W x H(mm)	270*185*90	
N.G(KG)	3.6	
G.N(KG)	4.2	
Color	Blue/Green (optional)	
Safety	CE, RoHS, PSE, FCC	
EMC	EN61000	
Type of Mechanical Protection	IP21	
Environment		
Humidity	0~90%RH ( no condense)	
Altitude	0~3000m	
Operating Temperature	-20℃ ~ +40℃	
Storage Temperature	-40℃ ~ +75℃	
Atmospheric Pressure	70~106kPa	

## Pictures:



## The Figures of the PC Firmware and Testing Software

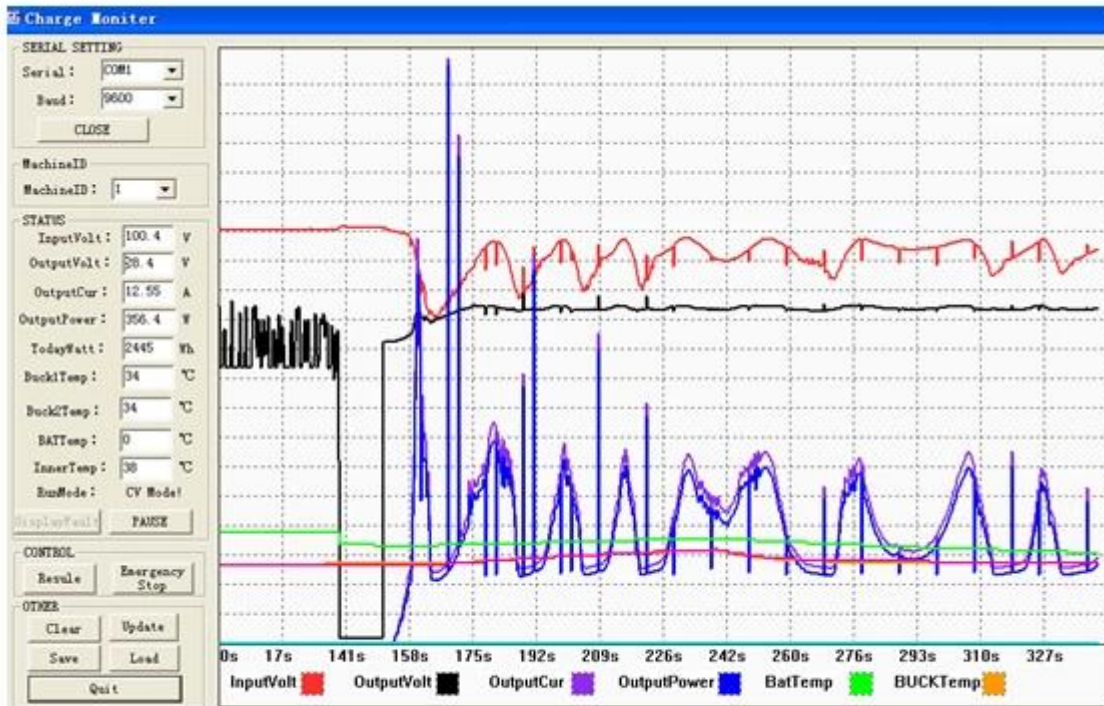


Figure2: Testing Software

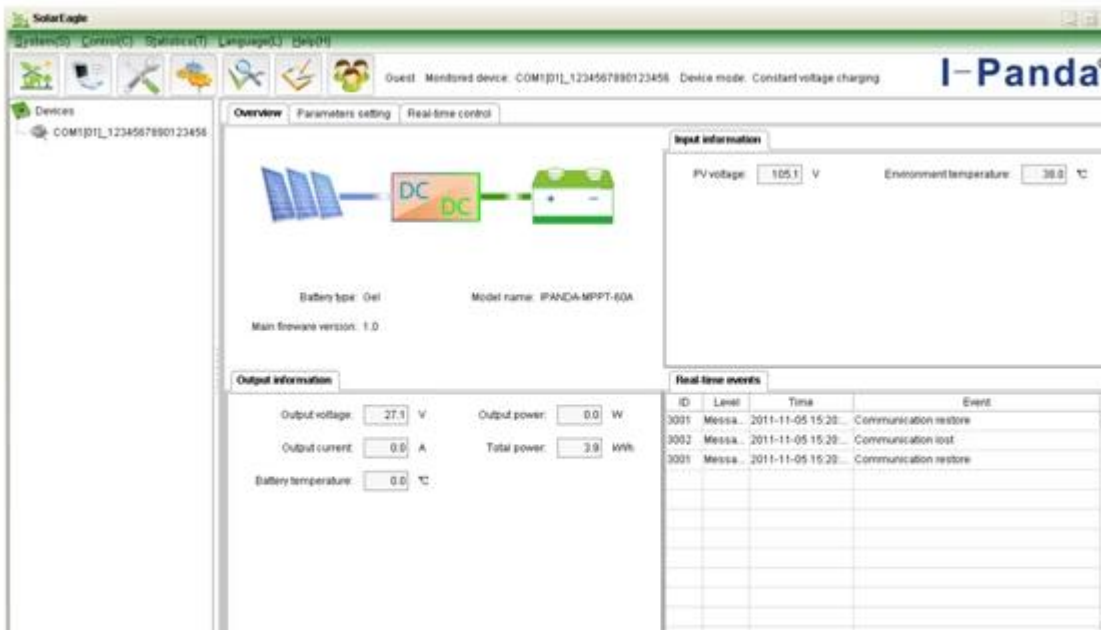


Figure 1: PC Firmware

- Note: 1) Attachment have upper computer software , suitable for all computer system .  
 2) Trafficker will provide neutral upper computer software and CD ,or software with customer's logo .  
 3) WIN7 , WIN8 system user , please log in as administrator: More details please check the manual.