





□□□

1. MPPT □□□□□□99□□□□□□□□□□

2. 12V / 24V / 48V □□□□□□□□□□

□□□□ PV □□□3. Wide □□□ DC150V □□□□

4. Unlimited □□□□

□□□5. Journal □□□□□□□□□□□□□□□□□□

6. Charge □□□□3 □□□□□□□□□□□□□□□□□□□. It □□□□□□□□□□□□□□□□

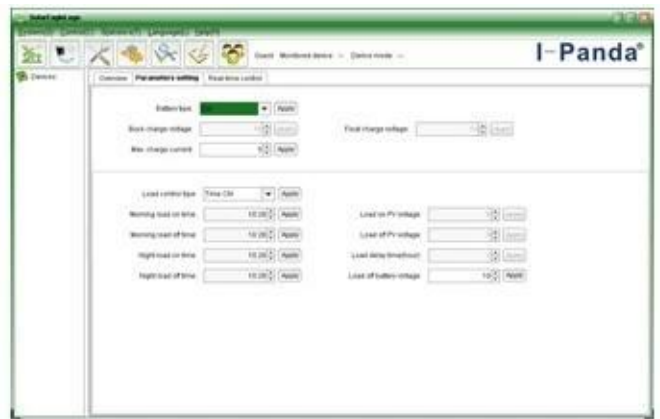
7. Discharge □□□□□□□ ON / OFF □□□□□□□□□□ PV □□□□□□□□ PV □□+ □□□□□□□ ON □

8. Recommended □□□□□□□□□□□□□□□□□□ NiCd □□□□□□□□□□□□□□□□□□□□□□□□

9. Most □□□ LCD □□□□□□□□□□□□□□□ LED □□□□ PV □□□□□□□□□□□□□□□□□□□□□□□□□□□□□□



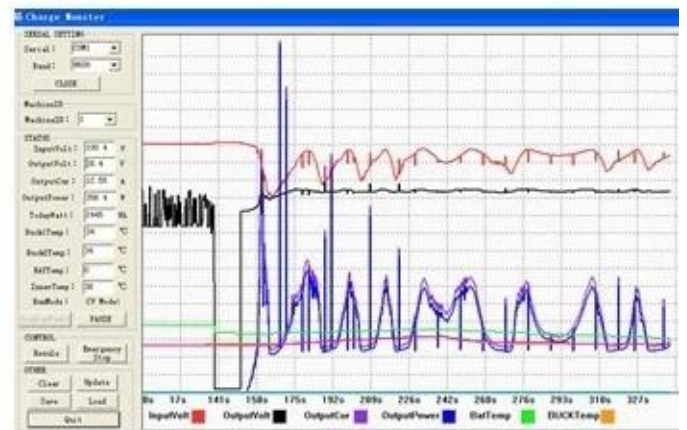
The interface of upper computer software working state



The interface of upper computer software parameter setting state



Upper computer software on/off interface and generating capacity record clean interface



The interface of test software working state

MPPT



□□
[ISO2008](#)
[ISO2004](#)
 CE
[FCC](#)
[ROHS](#)

□□





