





□

1.MPPT □□□□□□99□□□□□□□□

2.12V / 24V / 48V□□□□ □□□□

□□□□PV□□□3.Wide□□□ DC150V□□□□

4.Unlimited□□□□

5.Journal□□□□□□□□□□ □□□□□□□□□□□□□□

6.Charge□□□□3□□□□□□□□□□□□□□□□□□ □□□.It□□□□□□□□□□□□□□□□

7.Discharge□□□□/ OFF□□□□□□□□□□PV□□□□ON □□□□PV□□+□□□□□□□□□□

8.Recommended□□□□□□□□□□□□□□□□ □□□□□□□□□□□□□□□□□□□□□□

9.Most□□□□□□□□ LCD□□□□□□□□□□□□□□□LED□□□□□□□□□□□□□□□□□□□□□□□□ □□ □□□ □□ □□

10.RS232/LAN 可選 IP 可選 area.And 可選

11. 11

12.With

13.Adopting 105°C.the 10

2002/95 / EC 14.Compliance

15.Equipment + CD-ROM + + + +

16.CE/ROHS

17.2 3 10

P-SMART2-40A / 50A / 60A -series		40A	50A	60A
MPPT	3			
DC	12V / 24V / 48V			
DC	12V	DC9V	DC15V	
	24V	DC18V	DC30V	
	48Vsystem	DC36V	DC60V	
DC	12V / 24V / 48Vsystem	≤10S		
DC	12V / 24V / 48Vsystem	500US		
DC	12V / 24V / 48Vsystem	≥96.5%≤99%		
PV	12V / 24V / 48Vsystem	≥99%		
MPPT	12V	DC18V	DC150V	
	24V	DC34V	DC150V	
	48V	DC65V	DC150V	
DC	12V	DC16V		
	24V	DC30V		
	48V	DC60V		
DC	12V	DC22V		
	24V	DC34V		
	48V	DC65V		
DC	12V / 24V / 48V	DC160V		
DC	12V / 24V / 48V	DC150		
DC	12V / 24V / 48V	DC145V		
PV	12V	570W	700W	900W
	24V	1130W	1400W	1700W
	48V	2270W	2800 W	3400W
	12V / 24V / 48V			
	12V / 24V / 48V			
	12V / 24V / 48V			
	12V	14.6V		
	24V	29.2V		
	48V	58.4V		
	12V / 24V / 48V	40A	50A	60A
	12V / 24V / 48V	44A	55A	66A
	12V / 24V / 48V	40A	50A	60A
	12V / 24V / 48V	±0.02°C		

12V / 24V / 48V	14.2V-25°C* 0.3
12V / 24V / 48V	200mV
12V / 24V / 48V	≤±1.5
12V / 24V / 48V	200mV
12V / 24V / 48V	≤±1.5
LAN	
12V / 24V / 48V	40A
12V / 24V / 48V	30A * 2
12V / 24V / 48V	/ On
ON / OFF	ON ON / OFF
PV	PV PV
PV	PV
12V / 24V / 48V	10.5
RS232	
12V / 24V / 48V	COM
LAN	IP TCP
95°C	
85°C 3a	
≤40dB	
EU 105°C	
2002/95 / EC	
270 * 185 * 90	
3	
3.6	
CE / RoHS / PSE / FCC	
EMC EN61000	
IP21	
90 RH	
3000	
-20°C + 40°C	
-40°C + 75°C	
70 106kPa	

OEM ODM 36V / 72V / 96V

NO

NO		
1	1	
2	2 PC	
3	2 PC	Gallow
4	4	
5	1 PC	RJ45 232
6	1 PC	
7	1 PC	
8	2 PC	



Blue



Green



Upper Computer Software



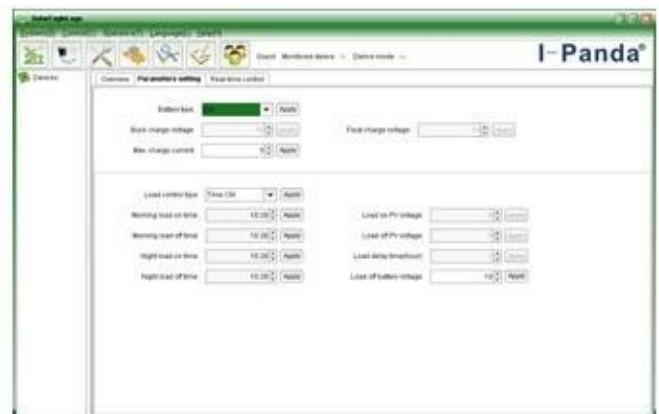
Parts



Package



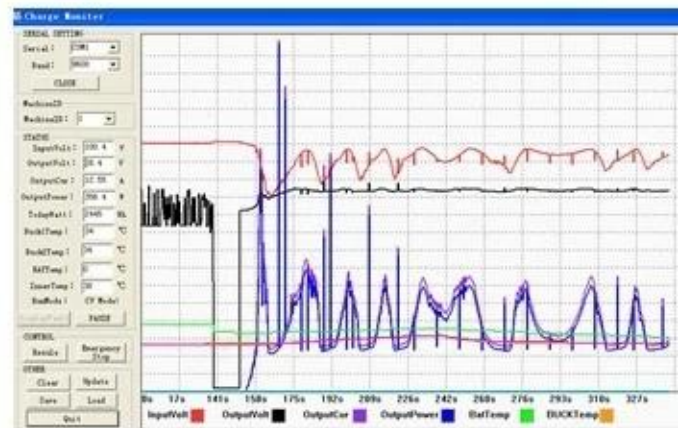
The interface of upper computer software working state



The interface of upper computer software parameter setting state

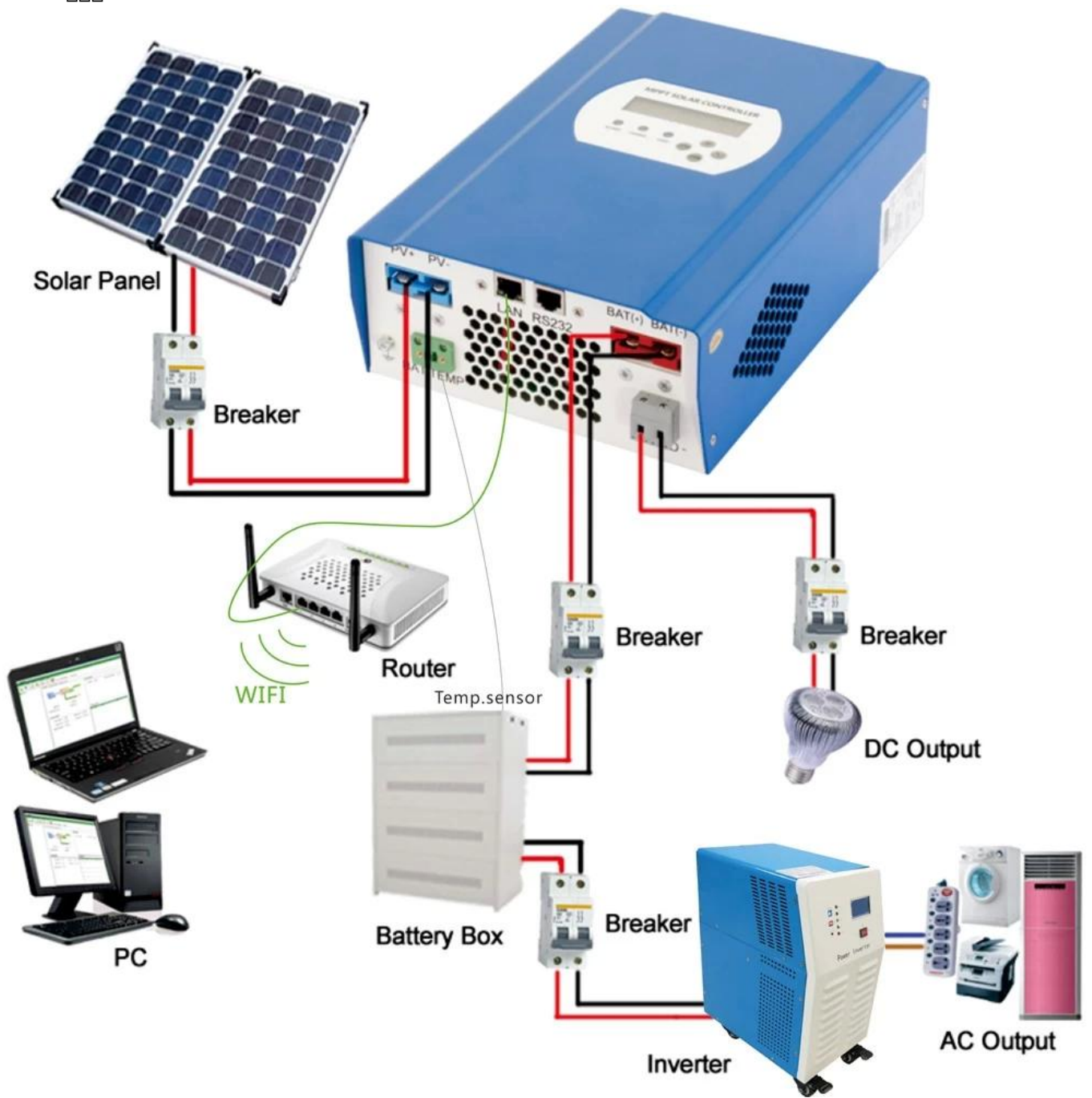


Upper computer software on/off interface and generating capacity record clean interface



The interface of test software working state

MPPT



5.1 OEM ODM