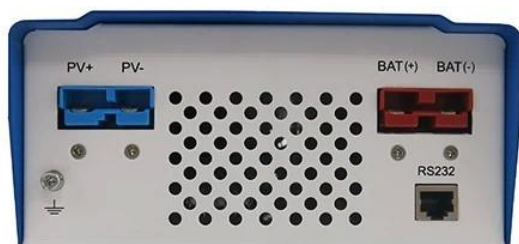


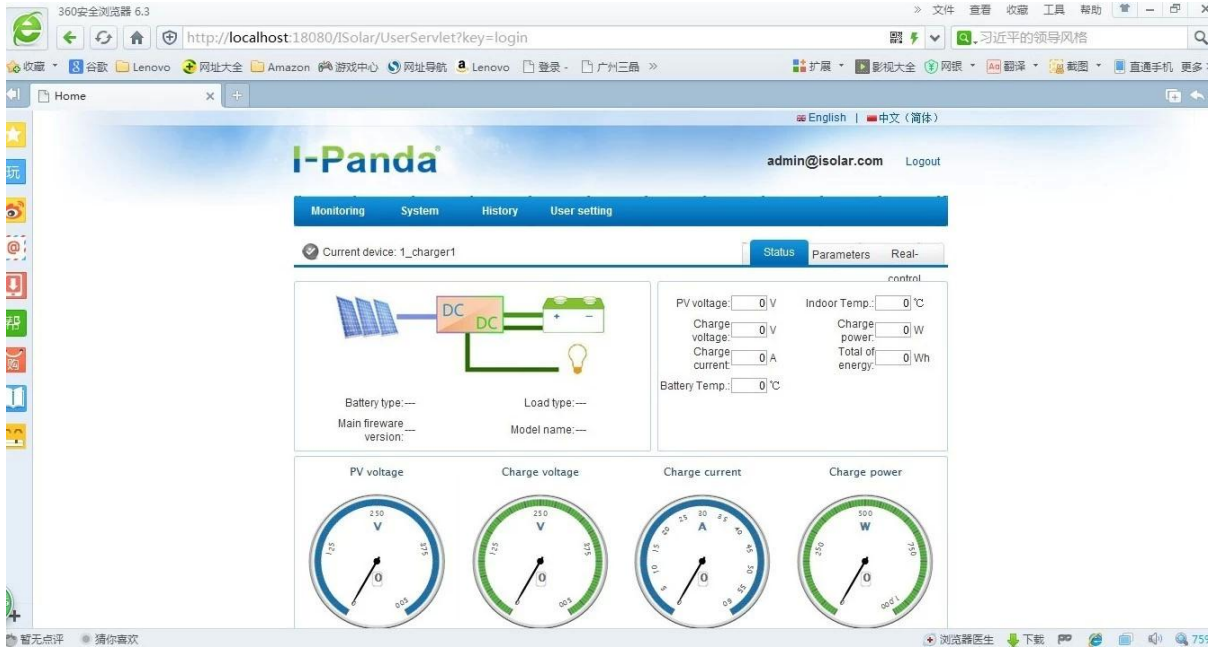
12V / 24V / 48V MPPT 40A 50A 60A





MPPT

- 1. 95-99
- 2. 3
- 3.
- 4. RS232
- 5.



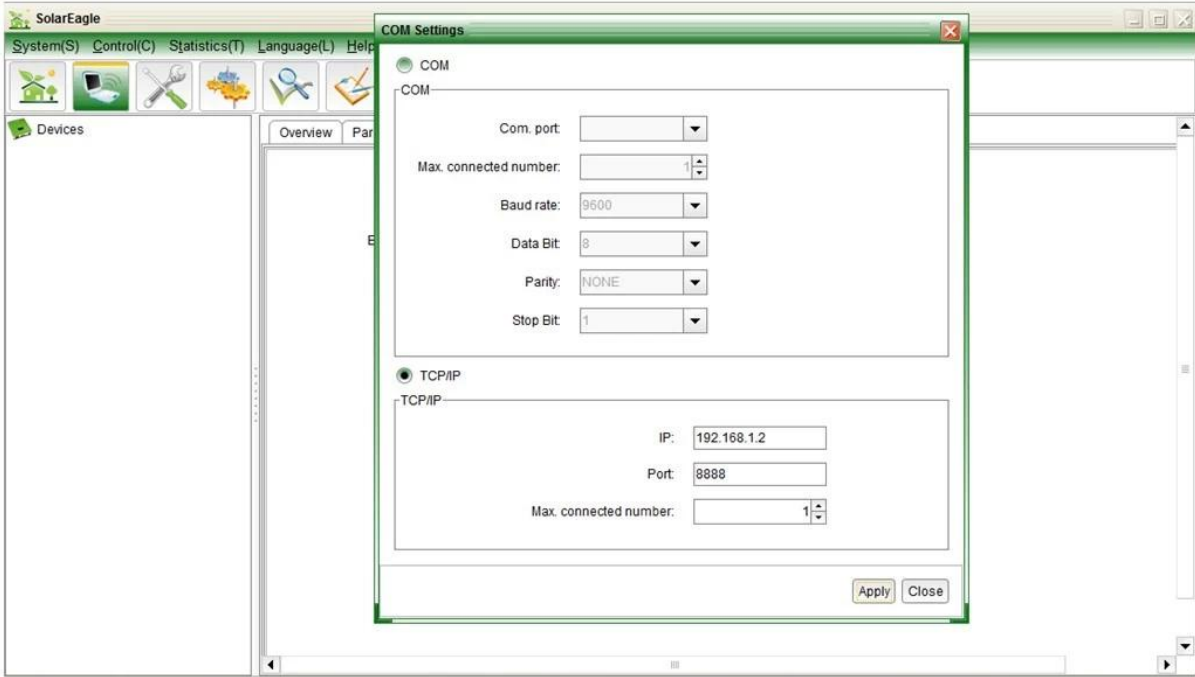
MPPT

	40A	50A	60A
I-P-SMART1 -DC12V / 24V / 48V			
	3 MPPT		
	DC12V / 24V / 48V		
		DC9V DC15V	
		DC18V DC30V	
		DC36V DC60V	
	12V / 24V / 48Vsystem	≤10S	
	12V / 24V / 48Vsystem	500US	
	12V / 24V / 48Vsystem	≥96.5 ≤99	

PV	12V / 24V / 48Vsystem	≥99%		
MPPT				
MPPT	12V	DC18V/DC150V		
	24V	DC34/DC150V		
	48V	DC65/DC150V		
	12V	DC16V		
	24V	DC30V		
	48V	DC60V		
	12V	DC22V		
	24V	DC34V		
	48V	DC65V		
DC	12V / 24V / 48V	DC160V		
	12V / 24V / 48V	DC150		
	12V / 24V / 48V	DC145V		
PV	12V	570W	700W	900W
	24V	1130W	1400W	1700W
	48V	2270W	2800W	3400W
GEL				
GEL	12V / 24V / 48Vsystem	GEL		
	12V / 24V / 48V			
	12V / 24V / 48V			
	12V	14.6V		
	24V	29.2V		
	48V	58.4V		
	12V / 24V / 48V	40A	50A	60A
	12V / 24V / 48V	44A	55A	66A
	12V / 24V / 48V	±0.02%/°C		
	12V / 24V / 48V	14.2V-25°C* 0.3		
	12V / 24V / 48V	200mV		
	12V / 24V / 48V	≤±1.5%		
PC		RS232/LAN		
Dimensions				
DxWxH	270 * 185 * 90			
N.G	3			
G.N	3.6			
	CE/RoHS/PSE/FCC			
EMC	EN61000			
	IP21			

NO		
1	1	
2	2 PC	
3	2 PC	Gallow
4	4	
5	1	RJ45/232
6	1	
7	1	
8	2 PC	

□□□□□□□□□□□□□□□□□□□□□□□□□□□□



MPPT□□



□□□□□□□□□□

1□□□

1.1□□□□□□□□□□□□□□□□□□□□□□□□□□□□

2□□□□□

2.1□□□□□□□□□□□□□□□□□□□□□□□□□□□□

2.2□□□□□□□□□□□□□□□□□□□□□□□□□□□□

2.3□□□□□□□□□□□□□□□□□□□□□□□□□□□□

□□□□□□□□□□□□□□□□□□□□□□□□□□□□

3

3.1

3.2

4

EMS DHL TNT