





產品說明

1. 30-60瓦特單路單電池

1. 效率95%-99%單路單電池

2. 具備單路單電池/三路單電池/3. 具備單路單電池/單路單電池

2. 具備單路單電池/單路單電池/IP68 防水等級單路單電池/單路單電池 4. 具備DC電壓選擇功能，可選擇energy儲存功能

3. 具備RS232通訊功能

4. 具備100%充電效率 具備單路單電池/單路單電池

規格

1. MPPT效率 效率99%

2. 12V / 24V / 48V單路單電池

max PV電壓30V DC150V

4. 具備單路

5. 具備單路單電池/單路單電池/單路單電池

6. Charge電壓3. 具備單路單電池/單路單電池.It 具備單路單電池/單路單電池

7. Discharge電壓ON / OFF 具備單路單電池/PV電壓/PV+ 具備單路單電池

8. Recommended 具備單路單電池/NiCd 具備單路單電池/單路單電池

9. Most 具備LCD 具備單路單電池/LED 具備單路單電池/PV 具備單路單電池/單路單電池

10.RS232 LAN IP area.And

11.
12.With

13.Adopting 105°C.The 10

14.Compliance 2002/95 / EC

15.Equipment + CD-ROM + + + ;

16.CE ROHS

Table Specifications

P-SMART2-40A / 50A / 60A -series		40A	50A	60A
MPPT	3			
DC Input	12V / 24V / 48V			
DC Output	12V / 24V / 48Vsystem	DC9V DC15V		
		DC18V DC30V		
		DC36V DC60V		
Response Time	12V / 24V / 48Vsystem	≤10S		
Charge Control	12V / 24V / 48Vsystem	500US		
Efficiency	12V / 24V / 48Vsystem	≥96.5%≤99%		
PV Protection	12V / 24V / 48Vsystem	≥99%		
MPPT				
MPPT	12V / 24V / 48V	DC18V DC150V		
	24V / 48V	DC34 DC150V		
	48V	DC65 DC150V		
DC Output	12V / 24V / 48V	DC16V		
		DC30V		
		DC60V		
DC Output	12V / 24V / 48V	DC22V		
		DC34V		
		DC65V		
DC Output	12V / 24V / 48V	DC160V		
		DC150		
		DC145V		
PV Power	12V / 24V / 48V	570W	700W	900W
		1130W	1400W	1700W
		2270W	2800W	3400W
Battery	12V / 24V / 48V	NiCd NiMH Li-ion		
Temperature	12V / 24V / 48V	-30℃ ~ 60℃		
Voltage	12V / 24V / 48V	14.6V		
		29.2V		
		58.4V		
Current	12V / 24V / 48V	40A	50A	60A
		44A	55A	66A
Temperature	12V / 24V / 48V	40A	50A	60A
Temperature	12V / 24V / 48V	±0.02%/℃		
Temperature	12V / 24V / 48V	14.2V @ 25℃* 0.3		
Voltage	12V / 24V / 48V	200mV		
Voltage	12V / 24V / 48V	≤±1.5%		
Temperature	12V / 24V / 48V	200mV		
Temperature	12V / 24V / 48V	≤±1.5%		
LAN				
LAN	12V / 24V / 48V	40A		

12V / 24V / 48V 10A	30A * 2
12V / 24V / 48V 10A	1000mAh / 1000mAh
12V / 24V / 48V 10A	ON / OFF
12V / 24V / 48V 10A	PV PV1000mAh
12V / 24V / 48V 10A	PV 1000mAh
12V / 24V / 48V 10A	10.5mm 1mm
RS232	COM
LAN	IP TCP
	95°C
	85°C 3A
	≤40dB
	EU 105°C
	2002/95 / EC
270x185x90mm	270 * 185 * 90
N.G	3
G.N	3.6
	CE RoHS PSE FCC
EMC	EN61000
	IP21
	90° RH
	3000h
	-20°C + 40°C
	-40°C + 75°C
	70 ± 106kPa

OEM ODM 36V / 72V / 96V

NO		
1	1	
2	2 PC	
3	2 PC	Gallow
4	4	
5	1	RJ45 232
6	1	
7	1	
8	2 PC	



Blue



Green



Upper Computer Software



Parts

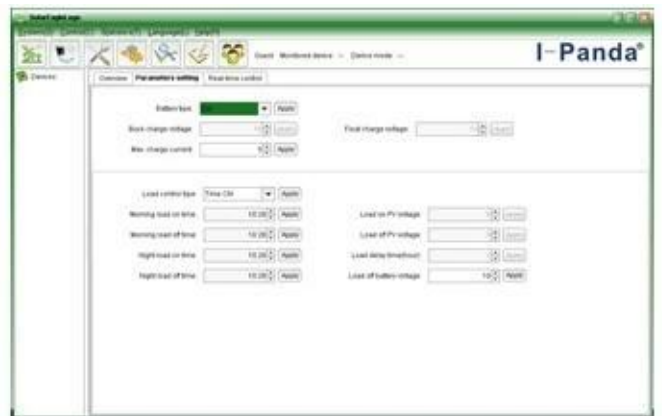


Package

□□□□□□□□□□□□□□□□□□□□□□□□□□□□□□



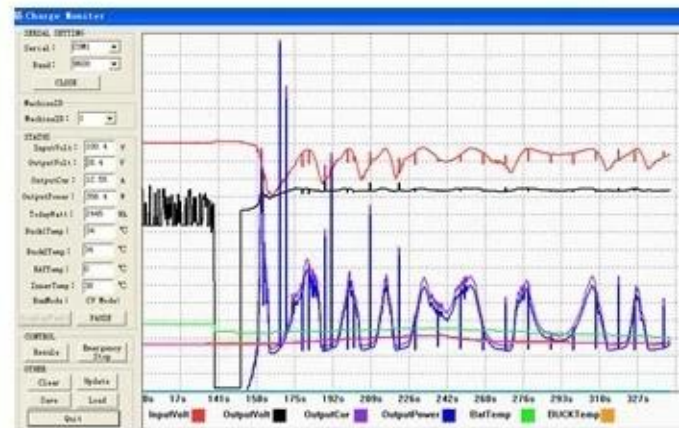
The interface of upper computer software working state



The interface of upper computer software parameter setting state

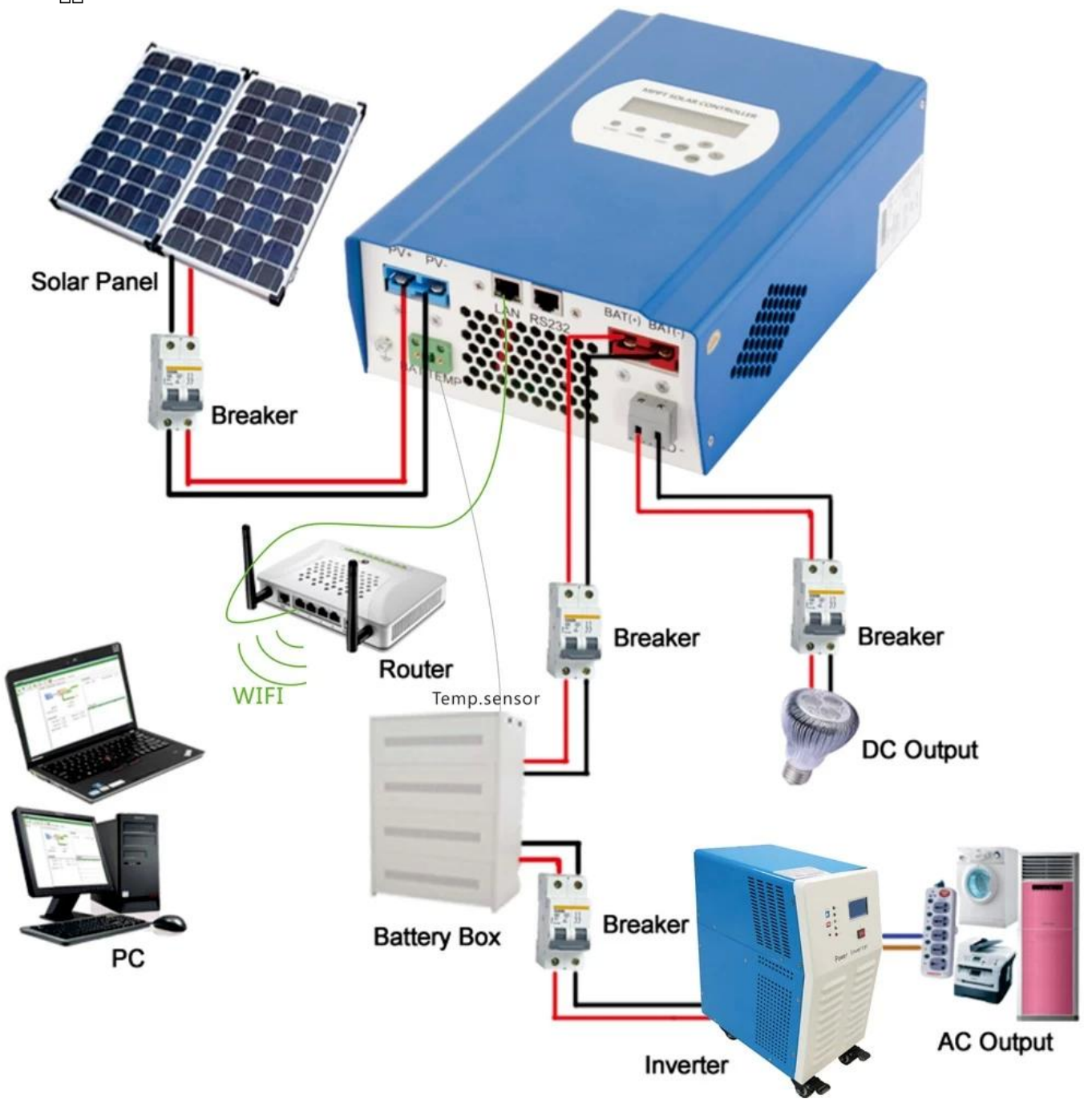


Upper computer software on/off interface and generating capacity record clean interface



The interface of test software working state

MPPT



3.1 5-7

3.2 7-15

3.3 25

4

EMS DHL Express 4.1

4.2

4.3

5 OEM ODM

5.1 OEM ODM