

12V / 24V / 48V MPPT 60a  
12V







**MPPT**

1. 95%-99% efficiency
2. 3-year warranty
3. IP65 protection level
4. RS232 communication
5. 100% efficiency

**MPPT**

1. 99% efficiency
2. 12V / 24V / 48V
3. max PV 300W DC150V
4. 4-pin connector
5. 3-year warranty
6. Charge controller ON / OFF
7. Recommended NiCd battery
8. Most LCD LED PV
9. RS232 LAN IP area. And






SolarEagle

System(S) Control(C) Statistics(T) Language(L) Help(H)

Guest Monitored device: --- Device mode: ---

Devices

Overview Parameters setting Real-time control



Input information

PV voltage: 0.0 V Environment temperature: 0.0 °C

Battery type: --- Load type: ---  
Main firmware version: --- Model name: ---

Charge information

Charge voltage: 0.0 V Charge power: 0.0 W  
Charge current: 0.0 A Total power: 0.0 Wh  
Battery temperature: 0.0 °C

Real-time events

ID	Level	Time	Event

SolarEagleLogo

System(S) Control(C) Statistics(T) Language(L) Help(H)

Guest Monitored device: --- Device mode: ---

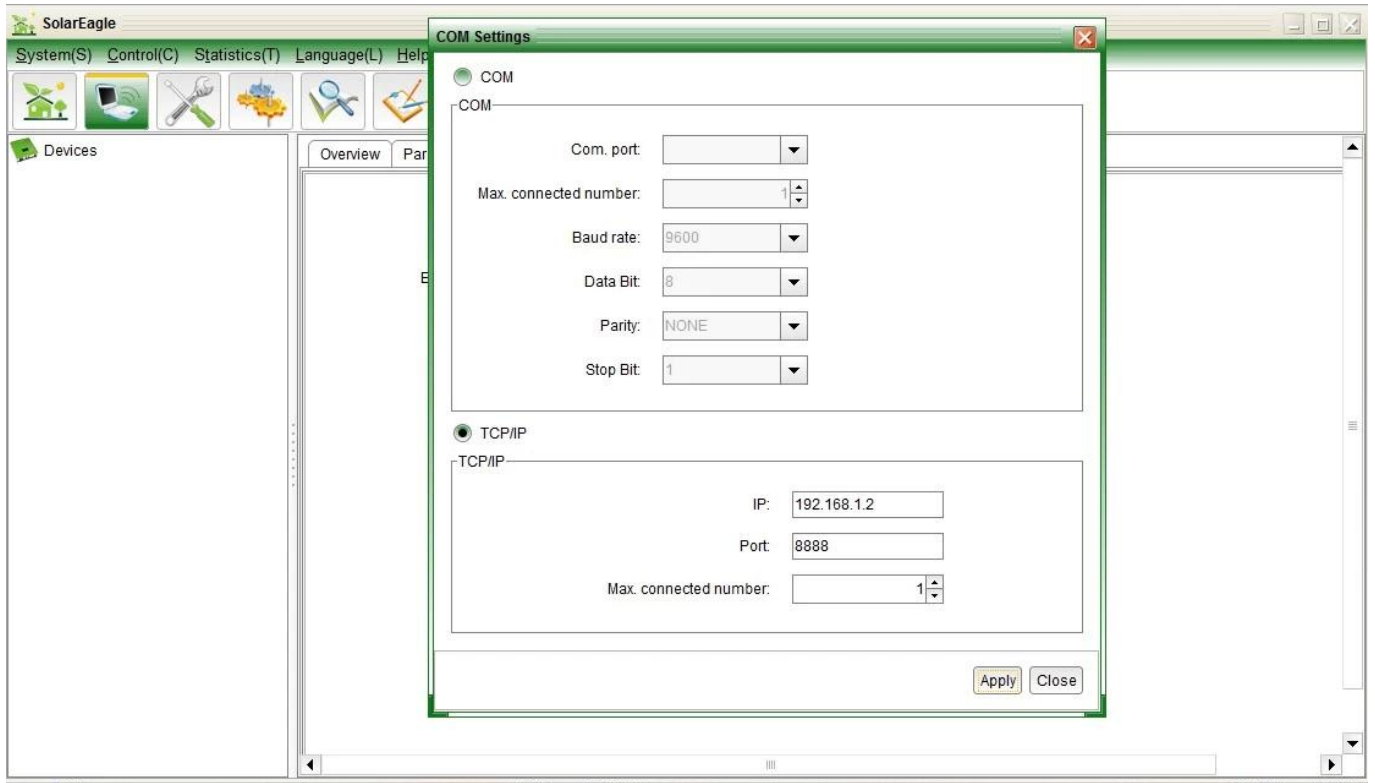
I-Panda®

Devices

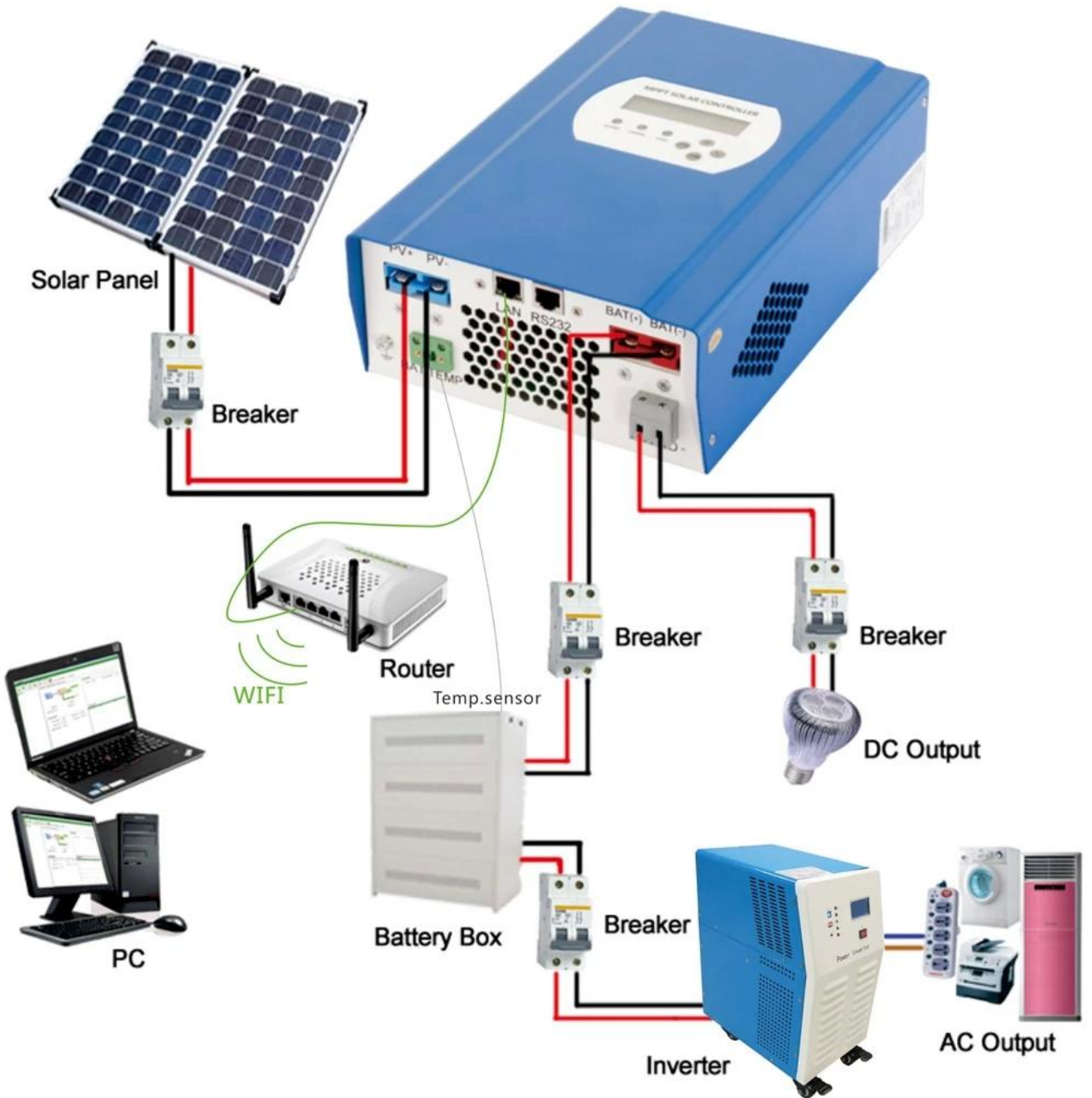
Overview Parameters setting Real-time control

Battery type:    
 Buck charge voltage:    
 Max. charge current:    
 Float charge voltage:

Load control type:    
 Morning load on time:    
 Morning load off time:    
 Night load on time:    
 Night load off time:    
 Load on PV voltage:    
 Load off PV voltage:    
 Load delay time(hour):    
 Load off battery voltage:



MPPT□□



**R&D; D**

[R&D; D](#)

**1**

1.1

2

2.1

2.2

2.3

3

3.1

3.2

4

4.1

4.2

4.3

4.4



□□□□□□□4.3□□□□□