



13. Adopting 105°C . The 10^5 hours life test at 105°C is passed.
 14. Compliance with CE mark 2002/95 / EC Directive.
 15. Equipment with CD-ROM + software + manual.
 16. CE ROHS compliant.

MODEL I-P-SMART2-20A / 25A / 30A - SERIES		20A	25A	30A
Power		2000VA	2500VA	3000VA
Output voltage		12V 24V 48V	12V 24V 48V	12V 24V 48V
Output current		$\leq 10\text{S}$	$\leq 10\text{S}$	$\leq 10\text{S}$
Output ripple		500US	500US	500US
Efficiency		$\geq 96.5\%$	$\geq 96.5\%$	$\geq 96.5\%$
PV Protection		$\geq 99\%$	$\geq 99\%$	$\geq 99\%$
MPPT	12V / 24V / 48V	DC18V / DC150V	DC34V / DC150V	DC65V / DC150V
Input	12V	DC16V	DC30V	DC60V
	24V	DC30V	DC60V	DC120V
	48V	DC60V	DC120V	DC240V
Output	12V	DC22V	DC44V	DC88V
	24V	DC34V	DC68V	DC136V
	48V	DC68V	DC136V	DC272V
DC Output		DC160V	DC150V	DC145V
PV Power	12V / 24V / 48V	286W	357W	429W
PV Power	24V / 48V	572W	715W	858W
PV Power	48V	1144W	1430W	1716W
Battery		NiCd	NiCd	NiCd
Output Voltage		DC10V / DC15V	DC10V / DC15V	DC10V / DC15V
Output Voltage		12V / 24V / 48V SYS	12V / 24V / 48V SYS	12V / 24V / 48V SYS
Output Voltage		20A	25A	30A
Output Voltage		25A	30A	35A
Temperature		$\pm 0.02^{\circ}\text{C}$	$\pm 0.02^{\circ}\text{C}$	$\pm 0.02^{\circ}\text{C}$
Temperature		14.2V @ 25°C * 0.3	14.2V @ 25°C * 0.3	14.2V @ 25°C * 0.3
Accuracy		200mV	200mV	200mV
Accuracy		$\leq \pm 1.5\%$	$\leq \pm 1.5\%$	$\leq \pm 1.5\%$
Accuracy		200mV	200mV	200mV
Accuracy		$\leq \pm 1.5\%$	$\leq \pm 1.5\%$	$\leq \pm 1.5\%$
Port		LAN	LAN	LAN
Port		30A	30A	30A
Port		420W	840W	1680W
Port		40A*2	40A*2	40A*2
Port		ON / OFF / ON	ON / OFF / ON	ON / OFF / ON
Port		ON / OFF	ON / OFF	ON / OFF
PV Protection		PV / PV	PV / PV	PV / PV
PV Protection		PV	PV	PV
Accuracy		10.5% / 1%	10.5% / 1%	10.5% / 1%
COM		COM	COM	COM
RS232		COM	COM	COM
LAN		IP	IP	IP
Port		TCP	TCP	TCP

Model	Model
Part Number	Part Number
Weight	Weight
Power Consumption	Power Consumption
Operating Temperature	Operating Temperature
Storage Temperature	Storage Temperature
Humidity	Humidity
Shock	Shock
Vibration	Vibration
EMC	EMC
CE	CE
RoHS	RoHS
PSE	PSE
FCC	FCC
EN61000	EN61000
IP21	IP21
90% RH	90% RH
3000	3000
-20°C + 40°C	-20°C + 40°C
-40°C + 75°C	-40°C + 75°C
70 / 106kPa	70 / 106kPa

OEM/ODM 36V / 72V / 96V

NO	Qty	Description
1	1	Power Supply
2	2 PC	Gallow
3	4	Power Cables
4	1	RJ45 232
5	1	Power Cord
6	1	Power Cord
7	2 PC	Power Cord



Blue



Green

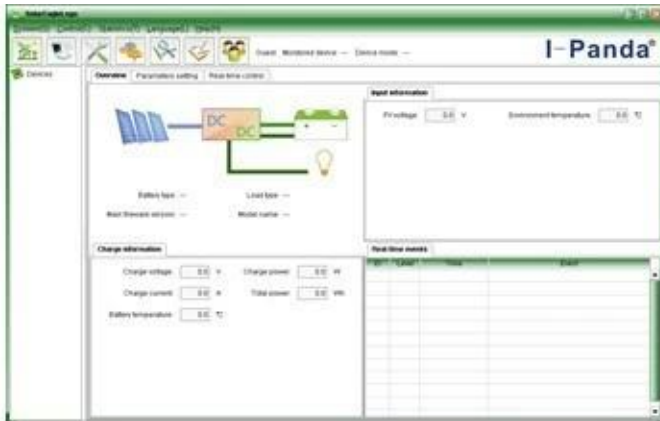


Upper Computer

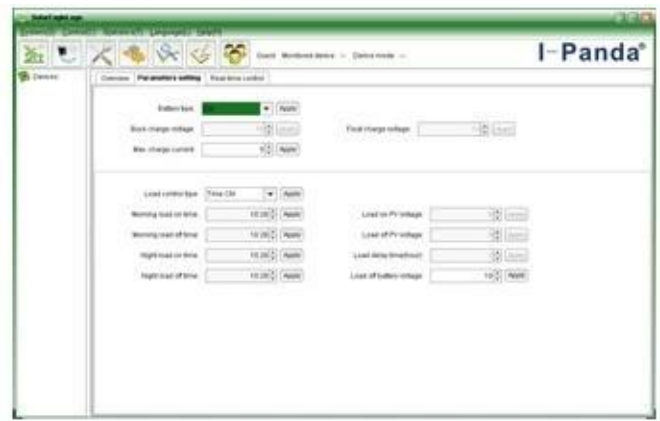


Package

Additional information



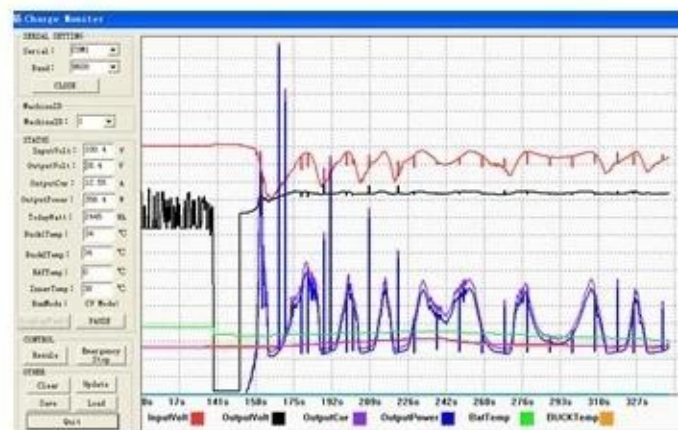
The interface of upper computer software working state



The interface of upper computer software parameter setting state



Upper computer software on/off interface and generating capacity record clean interface



The interface of test software working state

MPPT

3.3 25

4

EMS DHL Express 4.1

4.2

4.3

5 OEM ODM

5.1 OEM ODM