





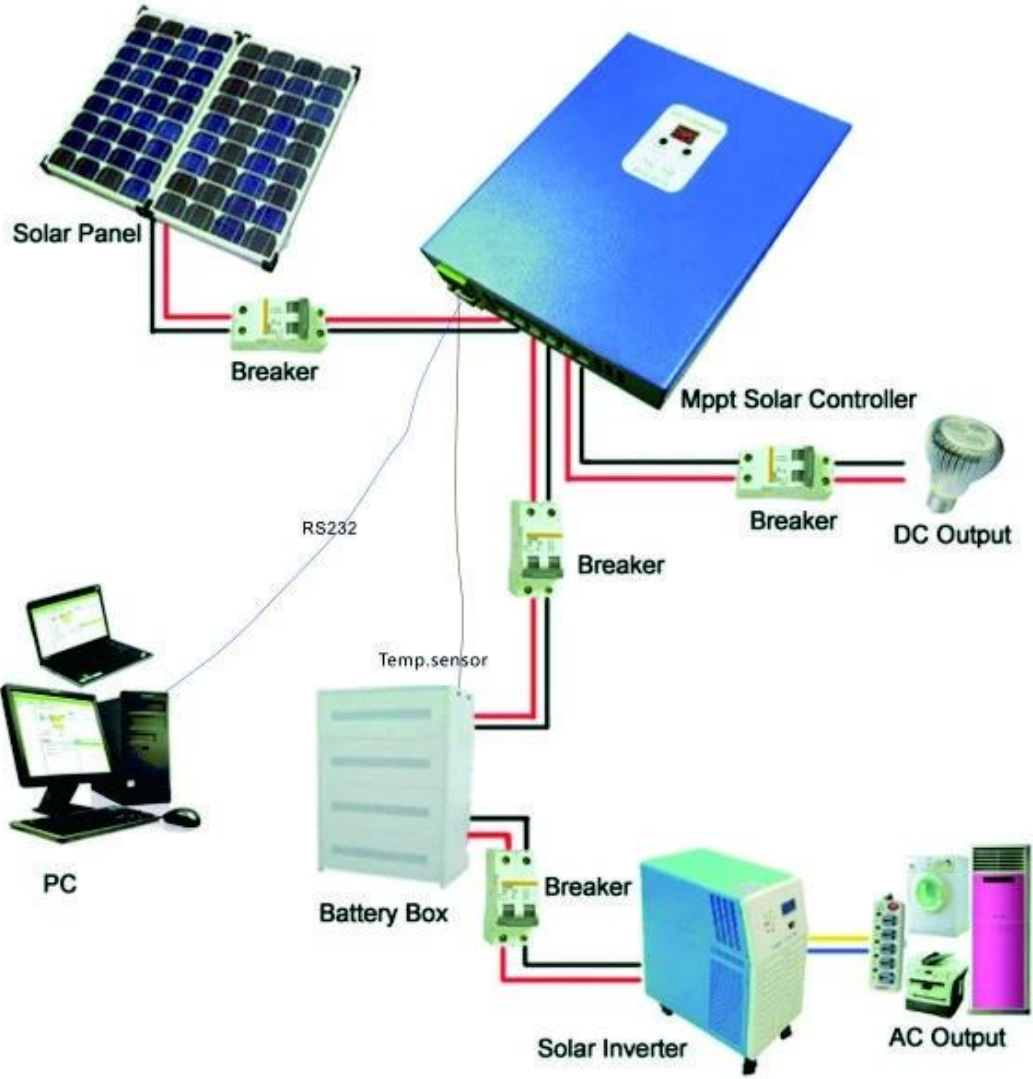
□□□□□□

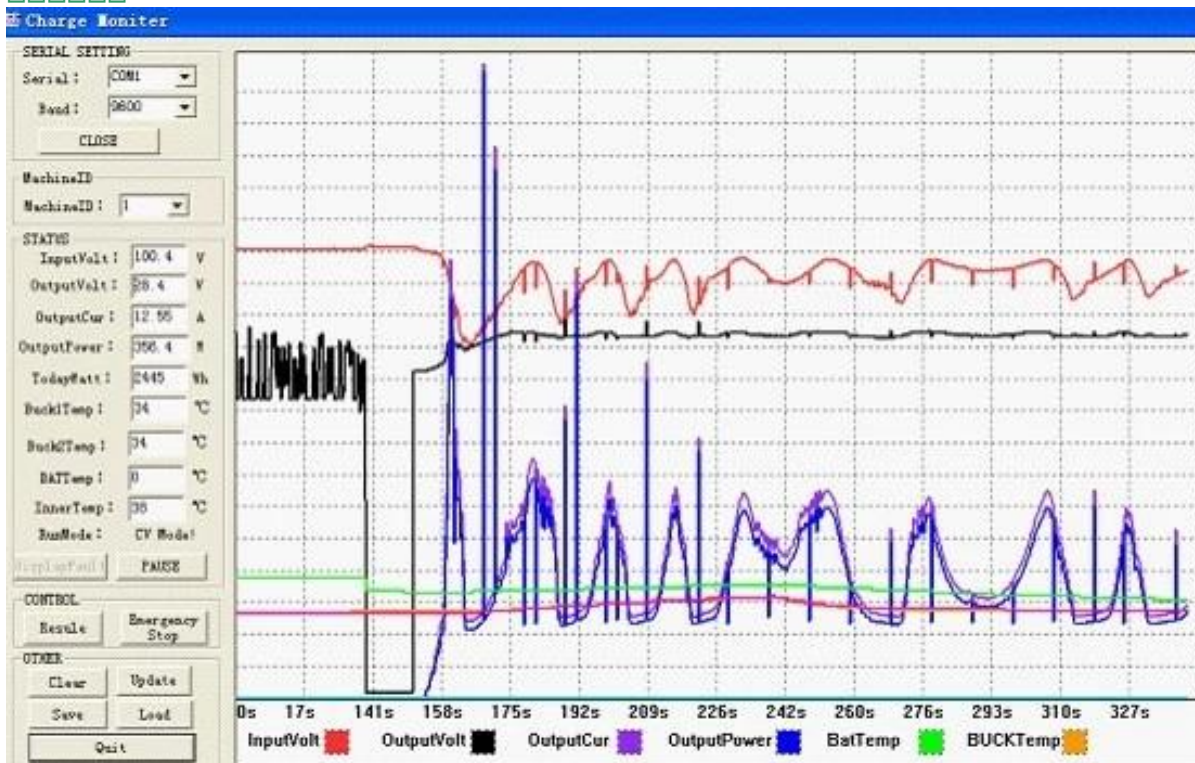
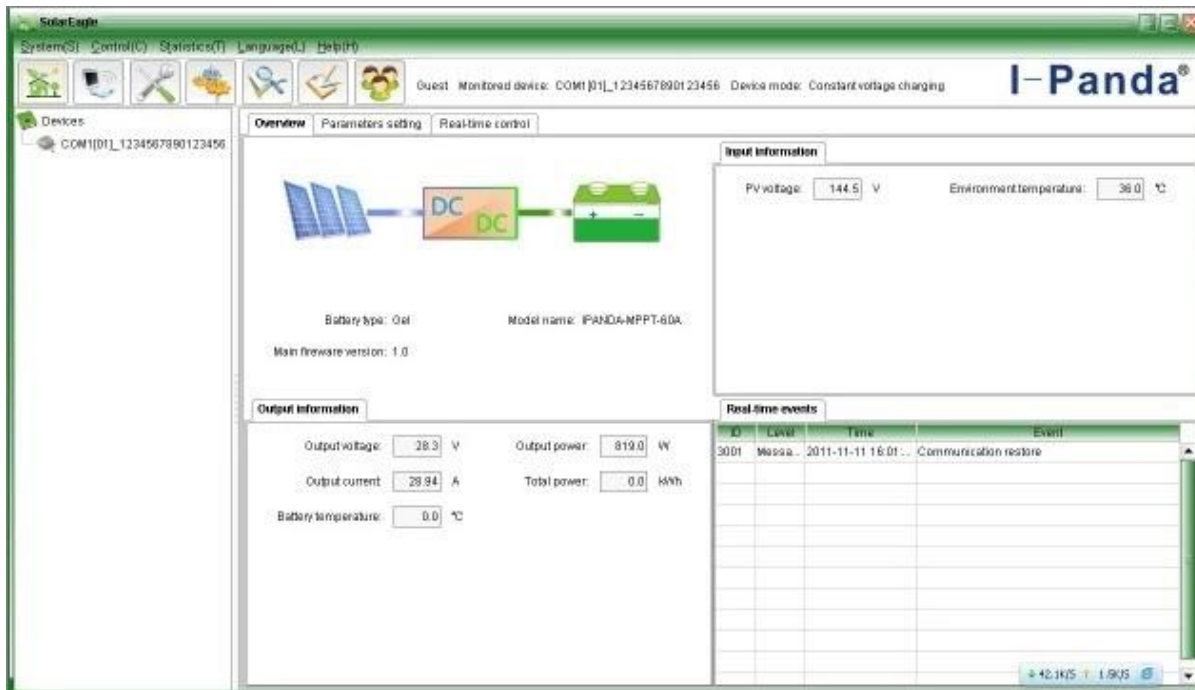
MPPT□□□□□□□□□□□□		40A
I-P-E-SMART-12V / 24V / 48V□□□□		
□□□□	MPPT□□□□□□□□	
□□□□	□□□□□□□□MPPT□□□□□□□□	
□□□□□□□□	DC12V / 24V / 48V □□□□	
□□□□	12V□□□□	DC9V□DC15V
	24V□□□□	DC18V□DC30V
	48V□□□□	DC36V□DC60V
□□□□□□□□□□	12V / 24V / 48V□□□□	≤3S
	□	
□□□□□□□□□□	12V / 24V / 48V□□□□	500US
	□	
MPPT□□	12V / 24V / 48V□□□□	≥96.5□□≤99□
	□	
□□□□		
MPPT□□□□□□□□□□	12V□□□□	DC14V□DC100V
	24V□□□□	DC30□DC100V
	48V□□□□	DC60□DC100V
□□□□□□	12V□□□□	DC14V
□□□□□□	24V□□□□	DC30V
	48V□□□□	DC60V
□□□□□□	12V□□□□	DC18V
□□□	24V□□□□	DC34V
	48V□□□□	DC65V
□□□□□□□□□□	12V / 24V / 48V□□□□	DC110V
	□	
□□□□□□□□□□□□□□	12V / 24V / 48V□□□□	DC100V
	□	

	12V□□□□W□	568
□□□□□□□□	24V□□W□	1136
	48V□□□□W□	2272
CHARGE CHRECTRESTICS		
□□□□□□□□□□□□ □□□□□□□□□□GEL□□ □□□	12V / 24V / 48V□□□ □	□□□□□□□□□□□□□□□□□□ □□□□□□□□□□□□□□□□□□
□□□	12V / 24V / 48V□□□ □	□□□□□□□□□□□□□□□□□□
□□□□□□	12V / 24V / 48V□□□ □	
□□□□□□	12V / 24V / 48V□□□ □	40A
□□□□ □□	12V / 24V / 48V□□□ □	45A
□□□□	12V / 24V / 48V□□□ □	±0.02□/°C
□□□□	12V / 24V / 48V□□□ □	14.2V-□□□□□25°C□* 0.3
□□□□□□□□□□□□	12V / 24V / 48V□□□ □	200mV□
□□□□□□□□ □□	12V / 24V / 48V□□□ □	≤±1.5□
□□□□□□		□□□□□□□□□□
□□□□□		□□□□□10.5V;□□11V□□□□□□□□
□□□□□□		30A
□□□□□		□□□□□□□□PV□□□□□□□□□□
□□□□□□□□□□		□□□□□□□□□□□□□□□□□□
□□		
LED□□□□□□□□		□□□□□□□□□□□□
LED□□□□□□		□□□□□□□□□□□□□□□□□□□□□□□□
PC□□□□□□□□		RS232
□□		
□□□□□□□□		□□□□□□□□□□
□□□□□□□□		□□□□□□□□□□
□□□□□□□□□□□□□□□□		□□
□□□□□□		□□
□□		□□
□□□□□□□□□□		□□
□□□□□		□□
□□□□□□□□□□		□□
□□□□		≤40dB
□□□□□□□□		□□□□□□□□□□□□ □□□□□
□□□□□□□□		EU□□□□□□□□□□□□□□□□□□
□□		FCC \ ROHS \ CE
□□□□□□		
□□D×□×H□mm□□		205 * 168 * 60
□□□□□□□□□□D×□×H□mm□□		265 * 196 * 110
N.G□KG□		1.8□□
G.N□KG□		2□□
□□□□□□□□□□		IP25
□□		
□□		0□90□RH□□□□□□
□□		0□3000□□□□□□
□□□□		-20°C□+ 50°C
□□□□		-40°C□+ 75°C
□□□□		70□□106kPa□□□□



I-P-ESmart-Swries System





LN
United Testing

Certificate Of Compliance

Certificate Number: LN2014041001EC-1

Applicant : Shenzhen I-Panda New Energy Technology & Science Co., Ltd.
Boick H, Juyin Technology Industrial Park, Bui Street, Longgang District,
Shenzhen, China

Manufacturer : Shenzhen I-Panda New Energy Technology & Science Co., Ltd.
Boick H, Juyin Technology Industrial Park, Bui Street, Longgang District,
Shenzhen, China

Product : MPPT SOLAR CHARGER CONTROLLER

Trade Name : I-PANDA

Model Number : SMART 60A, SMART10A, SMART 15A, SMART 20A, SMART 25A,
SMART 30A, SMART 40A, SMART 50A

Test Standard: EN55022-3:2010
EN55024-3:2010
EN61004-4-2:2009, EN61004-4-3:2006+A2:2010

The EUT described above has been tested by us with the listed standards and found in compliance with the council EMC Directive 2004/108/EC. It is possible to use CE marking to demonstrate the compliance with EMC Directive.

The certificate applies to the tested sample above mentioned only and shall not imply an assessment of the whole production. It is only valid in connection with the test report number: LN2014041001EC-1.

2014-04-10
Date of issue

United Testing Technology (Hong Kong) Limited
Unit 04/F, Bright Way Tower No.23 Mong Kok Road, Kowloon, HK
4/F, Unit 2, Janning Building, Cheung Kong Industry Area, West
Shau Road, Nanshan District, Shenzhen, PRC
Tel: +86-755-86180888 Fax: +86-755-86180192
http://www.ut.com.hk E-mail: info@ut.com.hk




LN
United Testing

FCC VERIFICATION OF CONFORMITY

Certificate Number: LN2014041001FC-1

We herewith confirm the following designated product:
MPPT SOLAR CHARGER CONTROLLER
Trade Name: I-PANDA
MODEL Number:
**SMART 60A, SMART10A, SMART 15A, SMART 20A, SMART 25A,
SMART 30A, SMART 40A, SMART 50A**
(Product Identification)

has been tested and found in compliance with the requirements of 47 CFR PART 15 regulation & ANSI C83.4 for the evaluation of Class A of electromagnetic compatibility. It is only valid in connection with the test report number: LN2014041001FC-1.

This device complies with Part 15 of the FCC rules, operation is subject to the following two conditions:
(1) This device may not cause harmful interference, and
(2) This device must accept any interference received,
including interference that may cause undesired operation.
(Identification of regulations/standards)

This declaration is the responsibility of the manufacturer/importer

Shenzhen I-Panda New Energy Technology & Science Co., Ltd.
Boick H, Juyin Technology Industrial Park, Bui Street, Longgang
District, Shenzhen, China.

MANUFACTURER / IMPORTER **TEST LABORATORY**

FC

Name _____
Date _____

2014-04-10
Date of issue

United Testing Technology (Hong Kong) Limited
Unit 04/F, Bright Way Tower No.23 Mong Kok Road, Kowloon, HK
4/F, Unit 2, Janning Building, Cheung Kong Industry Area, West
Shau Road, Nanshan District, Shenzhen, PRC
Tel: +86-755-86180888 Fax: +86-755-86180192
http://www.ut.com.hk E-mail: info@ut.com.hk




LN
United Testing

Certificate Of Compliance

Certificate Number: LN2014041001EC-1

Applicant : Shenzhen I-Panda New Energy Technology & Science Co., Ltd.
Boick H, Juyin Technology Industrial Park, Bui Street, Longgang District,
Shenzhen, China

Manufacturer : Shenzhen I-Panda New Energy Technology & Science Co., Ltd.
Boick H, Juyin Technology Industrial Park, Bui Street, Longgang District,
Shenzhen, China

Product : MPPT SOLAR CHARGER CONTROLLER

Trade Name : I-PANDA

Model Number : SMART 60A, SMART10A, SMART 15A, SMART 20A, SMART 25A,
SMART 30A, SMART 40A, SMART 50A

Test Standard: IEC62321-2013

The EUT described above has been consolidated by us and found in compliance with the council RoHS Directive 2011/65/EU. It is only valid in connection with the test report number: LN2014041001RH-1.

2014-04-10
Date of issue

United Testing Technology (Hong Kong) Limited
Unit 04/F, Bright Way Tower No.23 Mong Kok Road, Kowloon, HK
4/F, Unit 2, Janning Building, Cheung Kong Industry Area, West
Shau Road, Nanshan District, Shenzhen, PRC
Tel: +86-755-86180888 Fax: +86-755-86180192
http://www.ut.com.hk E-mail: info@ut.com.hk







□□□□ □□□□□□□□□□&□038;□□□

