



10. 11

11. With

2002/95 / EC 12. Compliance

13. Equipment + CD-ROM + + + + ;

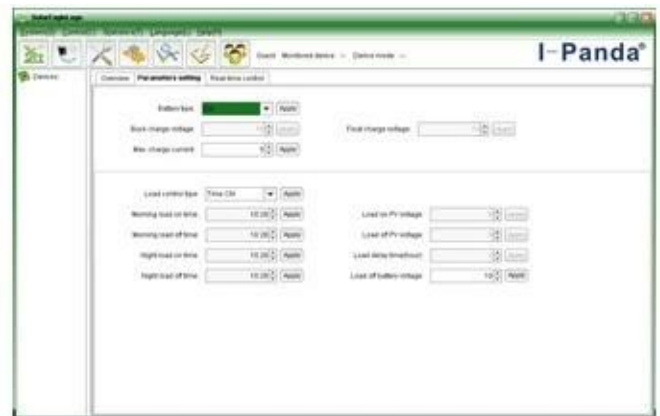
14. CE ROHS

15. 2 10 3 10

I-P-SMART2-40A / 50A / 60A -series		40A	50A	60A
MPPT	3			
DC12V / 24V / 48V				
12V	DC9V	DC15V		
24V	DC18V	DC30V		
48Vsystem	DC36V	DC60V		
12V / 24V / 48Vsystem	≤10S			
12V / 24V / 48Vsystem	500US			
12V / 24V / 48Vsystem	≥96.5% ≤99%			
PV	12V / 24V / 48Vsystem ≥99%			
MPPT	12V	DC18V	DC150V	
	24V	DC34V	DC150V	
	48V	DC65V	DC150V	
	12V	DC16V		
	24V	DC30V		
	48V	DC60V		
	12V	DC22V		
	24V	DC34V		
	48V	DC65V		
DC	12V / 24V / 48V	DC160V		
	12V / 24V / 48V	DC150		
	12V / 24V / 48V	DC145V		
PV	12V	570W	700W	900W
	24V	1130W	1400W	1700W
	48V	2270W	2800W	3400W
GEL	12V / 24V / 48V	NiCd		
	12V / 24V / 48V			
	12V / 24V / 48V			
	12V	14.6V		
	24V	29.2V		
	48V	58.4V		
	12V / 24V / 48V	40A	50A	60A
	12V / 24V / 48V	44A	55A	66A
	12V / 24V / 48V	40A	50A	60A
	12V / 24V / 48V	±0.02%/°C		
	12V / 24V / 48V	14.2V ±0.02% 25°C* 0.3		
	12V / 24V / 48V	200mV		
	12V / 24V / 48V	≤±1.5%		
	12V / 24V / 48V	200mV		
	12V / 24V / 48V	≤±1.5%		
LAN				
	12V / 24V / 48V	40A		
	12V / 24V / 48V	30A*2		
ON / OFF	12V / 24V / 48V			
PV	12V / 24V / 48V	PV		
PV	12V / 24V / 48V	PV		
	12V / 24V / 48V	10.5		
RS232	12V / 24V / 48V	COM		
LAN	12V / 24V / 48V	TCP		



The interface of upper computer software working state



The interface of upper computer software parameter setting state



Upper computer software on/off interface and generating capacity record clean interface



The interface of test software working state

MPPT



□□
[ISO2008](#)
[ISO2004](#)
[CE](#)
[FCC](#)
[ROHS](#)

□□





