







9. Most LCD LED PV

10. RS232 LAN IP area. And

11.

12. With

13. Adopting 105°C 10

2002/95 / EC 14. Compliance

15. Equipment + CD-ROM + + + ;

16. CE ROHS

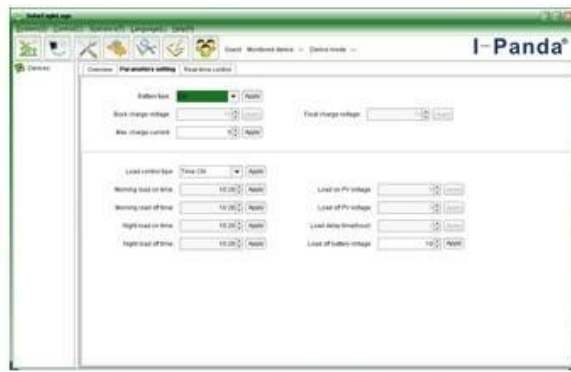
17. 2 3 10

P-SMART2-40A / 50A / 60A -series		40A	50A	60A
MPPT	3			
DC Input	DC12V / 24V / 48V			
DC Output	12V / 24V / 48Vsystem	DC9V / DC15V	DC18V / DC30V	DC36V / DC60V
Efficiency	12V / 24V / 48Vsystem	≤10S		
Response Time	12V / 24V / 48Vsystem	500US		
Accuracy	12V / 24V / 48Vsystem	≥96.5% ≤99%		
PV Protection	12V / 24V / 48Vsystem	≥99%		
MPPT Voltage	12V / 24V / 48V	DC18V / DC150V		
MPPT Current	24V / 48V	DC34V / DC150V		
MPPT Power	48V	DC65V / DC150V		
MPPT Voltage Range	12V / 24V / 48V	DC16V		
MPPT Current Range	24V / 48V	DC30V		
MPPT Power Range	48V	DC60V		
MPPT Voltage Accuracy	12V / 24V / 48V	DC22V		
MPPT Current Accuracy	24V / 48V	DC34V		
MPPT Power Accuracy	48V	DC65V		
DC Output	12V / 24V / 48V	DC160V		
DC Output Accuracy	12V / 24V / 48V	DC150		
DC Output Power	12V / 24V / 48V	DC145V		
DC Output Power	12V / 24V / 48V	570W	700W	900W
DC Output Power	24V / 48V	1130W	1400W	1700W
DC Output Power	48V	2270W	2800W	3400W
Battery	12V / 24V / 48V	NiCd		
Battery	12V / 24V / 48V	GEL		
Battery	12V / 24V / 48V	±0.02%/°C		
Battery	12V / 24V / 48V	14.6V		
Battery	24V / 48V	29.2V		
Battery	48V	58.4V		
Battery	12V / 24V / 48V	40A	50A	60A
Battery	12V / 24V / 48V	44A	55A	66A
Battery	12V / 24V / 48V	40A	50A	60A
Battery	12V / 24V / 48V	±0.02%/°C		
Battery	12V / 24V / 48V	14.2V-25°C* 0.3		
Battery	12V / 24V / 48V	200mV		
Battery	12V / 24V / 48V	≤±1.5%		
Battery	12V / 24V / 48V	200mV		
Battery	12V / 24V / 48V	≤±1.5%		
LAN		LAN		
LAN	12V / 24V / 48V	40A		
LAN	12V / 24V / 48V	30A*2		
LAN	12V / 24V / 48V	ON / OFF		





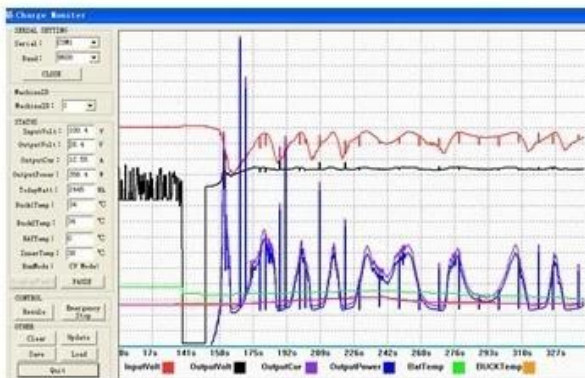
The interface of upper computer software working state



The interface of upper computer software parameter setting state



Upper computer software on/off interface and generating capacity record clean interface



The interface of test software working state

**MPPT**



□□  
[ISO2008](#)  
[ISO2004](#)  
[CE](#)  
[FCC](#)  
[ROHS](#)

□□







