

Product Name: [Product Name] 20A/30A [Product Name]
[Product Name] 30A/60A [Product Name]
[Product Name] PV [Product Name] RS
232 / LAN [Product Name] [- P-TPI2 [Product Name] / UPS]

- Features:**
- [Feature 1]
 - [Feature 2]
 - [Feature 3]
 - [Feature 4]
 - [Feature 5]
 - [Feature 6]

- Specifications:**
- [Spec 1: 1 30-60 [Product Name]
 - [Spec 2: 1 95-99 [Product Name]
 - [Spec 3: 2 [Product Name] 3 [Product Name]
- Options:**
- [Option 2: [Product Name] IP [Product Name]
 - [Option 3: [Product Name] 4 [Product Name] energy [Product Name]
- Communication:**
- [Option 3: [Product Name] RS232 [Product Name]
 - [Option 4: [Product Name] 1 [Product Name] 100 [Product Name]

Function:

- [Function 1: MPPT [Product Name] 99 [Product Name]
- [Function 2: 12V / 24V / 48V [Product Name]
- [Function 3: PV [Product Name] Wide [Product Name] DC150V [Product Name]
- [Function 4: Memory [Product Name]
- [Function 5: Charge [Product Name] 3 [Product Name] .IT [Product Name]
- [Function 6: Discharge [Product Name] / OFF [Product Name] PV [Product Name] PV+ [Product Name] ON [Product Name]
- [Function 7: Selected [Product Name] NiCd [Product Name]
- [Function 8: Most [Product Name] LCD [Product Name] LED [Product Name] PV [Product Name]
- [Function 9: RS232 [Product Name] LAN [Product Name] IP [Product Name] area. And [Product Name]
- [Function 10: [Product Name] 11 [Product Name]
- [Function 11: With [Product Name]
- [Function 12: Compliance [Product Name]
- [Function 13: Equipment [Product Name] + CD-ROM [Product Name] + [Product Name] + [Product Name];

14. CE ROHS

15. 10 3 10

MODEL I-P-SMART2-20A / 25A / 30A -SERIES		20A	25A	30A
		12V 24V 48V		
		≤10S		
		500US		
		≥96.5% ≤99%		
		≥99%		
MPPT				
	12V	DC18V	DC150V	
	24V	DC34V	DC150V	
	48V	DC65V	DC150V	
	12V	DC16V		
	24V	DC30V		
	48V	DC60V		
	12V	DC22V		
	24V	DC34V		
	48V	DC65V		
	DC	DC160V		
		DC150		
		DC145V		
	12V	286W	357W	PV
	24V	572W	715W	
	48V	1144W	1430W	
Output				
		NiCd GEL		
			DC10V DC15V	1
			12V	
		12V / 24V / 48V SYS		
		12V / 24V / 48V SYS		
		20A	25A	30A
		25A	30A	35A
		±0.02%/°C		
		14.2V-25°C* 0.3		
		200mV		
		≤±1.5%		
		200mV		
		≤±1.5%		



Blue



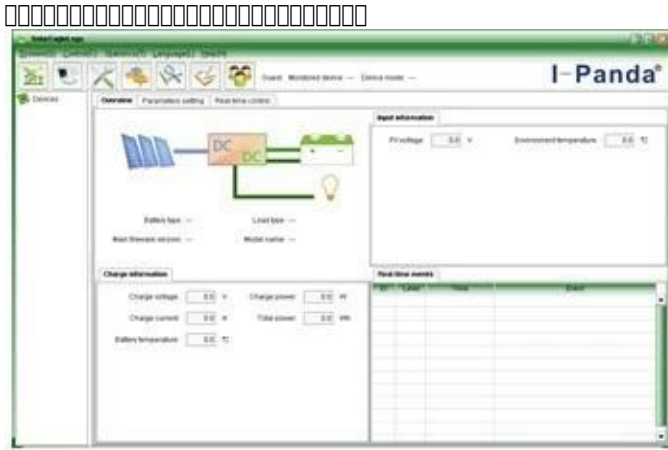
Green



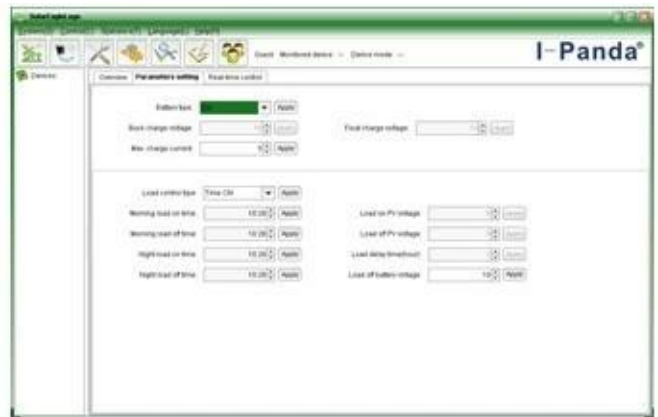
Upper Computer



Package



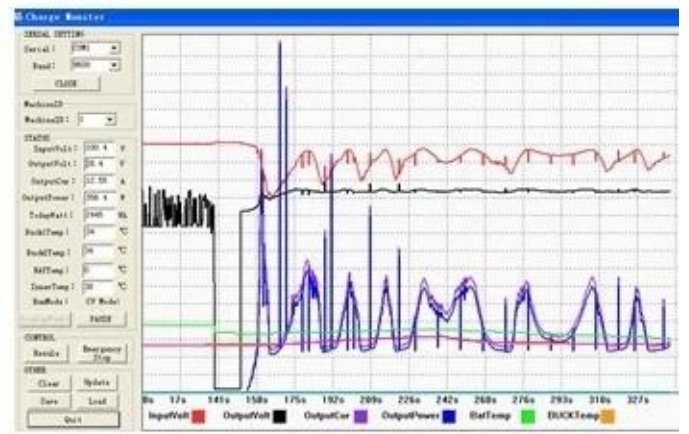
The interface of upper computer software working state



The interface of upper computer software parameter setting state



Upper computer software on/off interface and generating capacity record clean interface



The interface of test software working state

MPPT



-
- [ISO2008](#)
- [ISO2004](#)
- [CE](#)
- [FCC](#)
- [ROHS](#)

□□□□□□□□

1. □□
- 1.2 □□□□□□□□□□□□
2. □□□□□
- 2.1 □□□□□□□□□□□□□□□□
- 2.2 □□□□□□□□□□□□□□□□□□□□□□
- 2.3 □□□□□□□□□□□□□□□□□□□□□□□□□□□□
-
3. □□□□□□

3.1 5-7

3.2 7-15

3.3 25

4.

EMS DHL Express 4.1

4.2

4.3

5. OEM ODM

5.1 OEM ODM