



Core properties of MPPT solar charge controller

1. Conversion efficiency 95%-99%, take most from solar panels
2. Charge for all kinds of batteries, 3 charge stage to protect battery.
3. Data monitor and set. Parameters from solar panels like charge current/voltage and IP gate address, total generation power, etc can be showed. 4 kinds DC load control.
4. Lan commucation and RS232 port.
5. Software to monitor 100pcs equipments at the same time on one screen on a computer.

Features of MPPT solar charge controller

1. MPPT charge mode,conversion efficiency upto 99%
2. 12V/24V/48V system auto recognize;
3. Wide range of PV input with max. is DC150V .
4. Unlimited parallel connection
5. Journal function , Save function set ,Date ,time ,Generating capacity and so on .
- 6.Charge mode: three stages (fast charge ,constant charge ,floating charge) .It prolongs service life of the batteries .
- 7.Discharge mode: ON/OFF mode, double time control mode,PV voltage control mode ,PV voltage+time delay mode and so on .
- 8.Recommended battery types: sealed lead acid, vented, gel, NiCd battery. Other types of the batteries can also be defined.
- 9.Most information could be provide by LCD and LED like: model no.,PV input voltage,battery type,battery voltage,charging current,charging power,working status and so on. Also customer's information like company name,website and logo can be added into Solar Eagle software.
- 10.RS232 and LAN communication port. IP and Gate address could be user define it satisfy global area.And

communication protocol can be provided to help customer manage all information .

11.The upper computer software is displayed in 11 languages, it could show work status and set parameters of the discharge system.

12.With intelligent design,the device can be upgraded online lifelong.

13.Adopting the well-known brand components,the devices can suffer the temperature not less than 105°C.The service life is designed to use for 10 years in theory.

14.Compliance with the 2002/95/EC environment protecting demand, doesn't include the Cadmium, hydride and fluoride etc material

15.Equipment integrity: controller + CD-ROM(microcomputer software) + communication wire + temperature sensing wire+Anderson terminals;

16.CE,ROHS certifications approved.

Parameter of MPPT solar charge controller

Model:I-P-SMART2-40A/50A/60A -series	40A	50A	60A
Charge Mode	Maximum Power Point Tracking		
Method	3 stages: fast charge(MPPT),constant voltage, floating charge		
System Type	DC12V/24V/48V	Automatic recognition	
System Voltage	12V system	DC9V~DC15V	
	24V system	DC18V~DC30V	
	48Vsystem	DC36V~DC60V	
Soft Start Time	12V/24V/48Vsystem	≤10S	
Dynamic Response	12V/24V/48Vsystem	500us	
Recovery Time	12V/24V/48Vsystem	≥96.5%,≤99%	
Conversion Efficiency	12V/24V/48Vsystem	≥99%	
PV Modules Utilization Rate	12V/24V/48Vsystem	≥99%	
Input Characteristics			
MPPT Working Voltage and Range	12V system	DC18V~DC150V	
	24V system	DC34~DC150V	
	48V system	DC65~DC150V	
Low Voltage Input Protection Point	12V system	DC16V	
	24V system	DC30V	
	48V system	DC60V	
Low Voltage Input Recovery Point	12V system	DC22V	
	24V system	DC34V	
	48V system	DC65V	
Max DC Voltage	12V/24V/48V system	DC160V	
Input Overvoltage Protection Point	12V/24V/48V system	DC150	
Input Overvoltage Recovery Point	12V/24V/48V system	DC145V	
Max. PV Power	12V system	700W	900W
	24V system	1400W	1700W
	48V system	2800W	3400W
Output Characteristics			
Selectable Battery Types (Default type is GEL battery)	12V/24V/48V system	Sealed lead acid, vented, Gel, NiCd battery (Other types of the batteries also can be defined)	
Constant Voltage	12V/24V/48V system	Please check the charge voltage according to the battery type form.	
Floating Charge Voltage	12V system	14.6V	
Over Charge Protection Voltage	24V system	29.2V	
	48V system	58.4V	
	12V/24V/48V system	40A	60A
Rated Output Current	12V/24V/48V system	50A	60A
Current-limiting Protection	12V/24V/48V system	44A	66A
Rate charge current	12V/24V/48V System	40A	60A
Temperature Factor	12V/24V/48V system	±0.02%/°C	
Temperature Compensation	12V/24V/48V system	14.2V-(The highest temperature-25°C)*0.3	
Output Ripples(peak)	12V/24V/48V system	200mV	
Output Voltage Stability Precision	12V/24V/48V system	±1.5%	
Charge voltage Peak-Peak Ripple	12V/24V/48V System	200mV	
Charger voltage accuracy	12V/24V/48V System	±1.5%	
Discharge characteristic			
Setting Control	Controller or LAN		
Max discharge current	12V/24V/48V System	40A	
Discharge protection	12V/24V/48V System	fuse 30A*2	
Double-time control	12V/24V/48V System	On in morning ,off in morning / On in night ,off in night	
ON / OFF mode	12V/24V/48V System	ON / OFF	
PV voltage control	12V/24V/48V System	PV voltage on□PV voltage off	
PV voltage / time delay control	12V/24V/48V System	PV voltage on□time delay off	
Discharge voltage protection	12V/24V/48V System	Output off when it under setting voltage; Factory set is 10.5 .(Note : set based on 1 battery)	
Communication Features			
RS232 Communication	12V/24V/48V System	Chose COM communication	
LAN Communication	12V/24V/48V System	Set IP and Gate address for controller and solar eagle ;Then chose TCP communication	
Protection			
Input Low Voltage Protection	Check the input characteristics		
Input Overvoltage Protection	Check the input characteristics		
Input Polarity Reversal Protection	yes		
Output Overvoltage Protection	Check the output characteristics		
Output Polarity Reversal Protection	yes		
Short-circuit Protection	Recover after eliminating the Short-circuit fault, no problem for long term Short-circuit		
Temperature Protection	95°C		
Temperature protection	Above 85 °C,decrease the output power, decrease 3A per degree.		
Other Parameters			
Noise	≤40dB		
Thermal methods	Forced air cooling, fan speed rate regulated by temperature, when inner temperature is too low, fan ran slowly or stop; when controller stop working, fan also stop ran.		
Components	World brand raw materials. Compliance with EU standards. All rated temperature of electrolytic capacitors not less than 105°C		
Smell	No peculiar smell and toxic substances.		
Environment Protection	Meet the 2002/95/EC,no cadmium hydride and fluoride		
Physical			
Measurement DxWxH (mm)	270*185*90		
N.G(kg)	3		
G.N(kg)	3.6		
Color	Blue/Green (optional)		
Safety	CE, RoHS, PSE,FCC		
EMC	EN61000		
Type of Mechanical Protection	IP21		
Environment			

Humidity	0~90%RH (no condense)
Altitude	0~3000m
Operating Temperature	-20°C ~ +40°C
Storage Temperature	-40°C ~ +75°C
Atmospheric Pressure	70~106kPa

Note: OEM and ODM service are provided. The above are basic data, required parameter can be customized for you.

Product Parts

NO.	Quantity	Description
1	1 unit	Charge controller
2	2 pc	Terminals
3	2 pc	Gallow pulley (For install the controller on the wall)
4	4 set	Screw (For install the controller on the wall)
5	1 pc	232 turn to RJ45 communication cable
6	1 pc	User manual
7	1 pc	Temperature sensing wire
8	2 pc	Fuse wire



Blue



Green



Upper Computer Software



Parts



Package

Upper Computer Software and Test Software


SolarEagle

System(S) Control(C) Statistics(T) Language(L) Help(H)

Guest Monitored device: --- Device mode: ---

Devices

Overview Parameters setting Real-time control



Input information

PV voltage: 0.0 V Environment temperature: 0.0 °C

Battery type: --- Load type: ---
Main firmware version: --- Model name: ---

Charge information

Charge voltage: 0.0 V Charge power: 0.0 W
Charge current: 0.0 A Total power: 0.0 Wh
Battery temperature: 0.0 °C

Real-time events

ID	Level	Time	Event

SolarEagleLogo

System(S) Control(C) Statistics(T) Language(L) Help(H)

Guest Monitored device: --- Device mode: ---

I-Panda®

Devices

Overview Parameters setting Real-time control

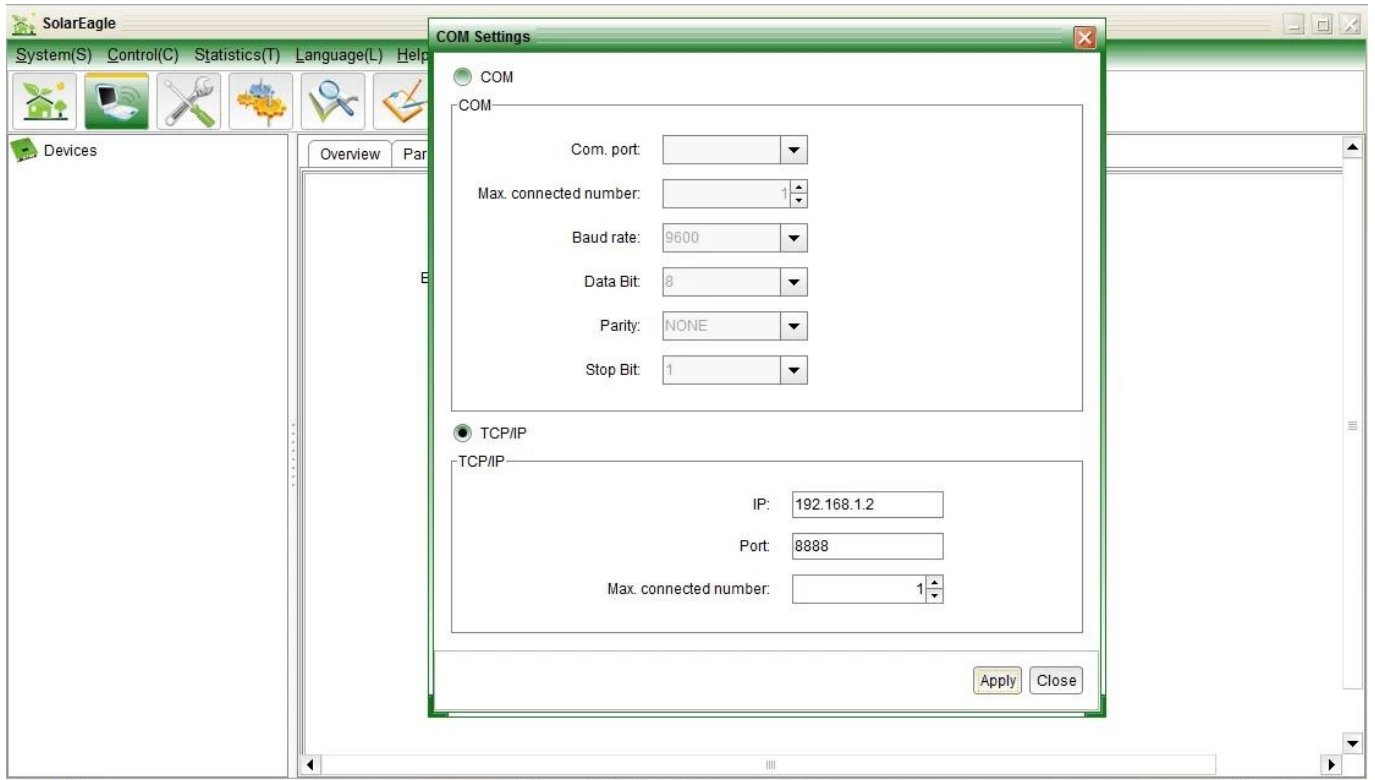
Battery type: **Vented** Apply
 Buck charge voltage: **Vented** Apply
 Max. charge current: **0.1** Apply
 Sealed
 Nicd
 Customer

Float charge voltage: 10 Apply

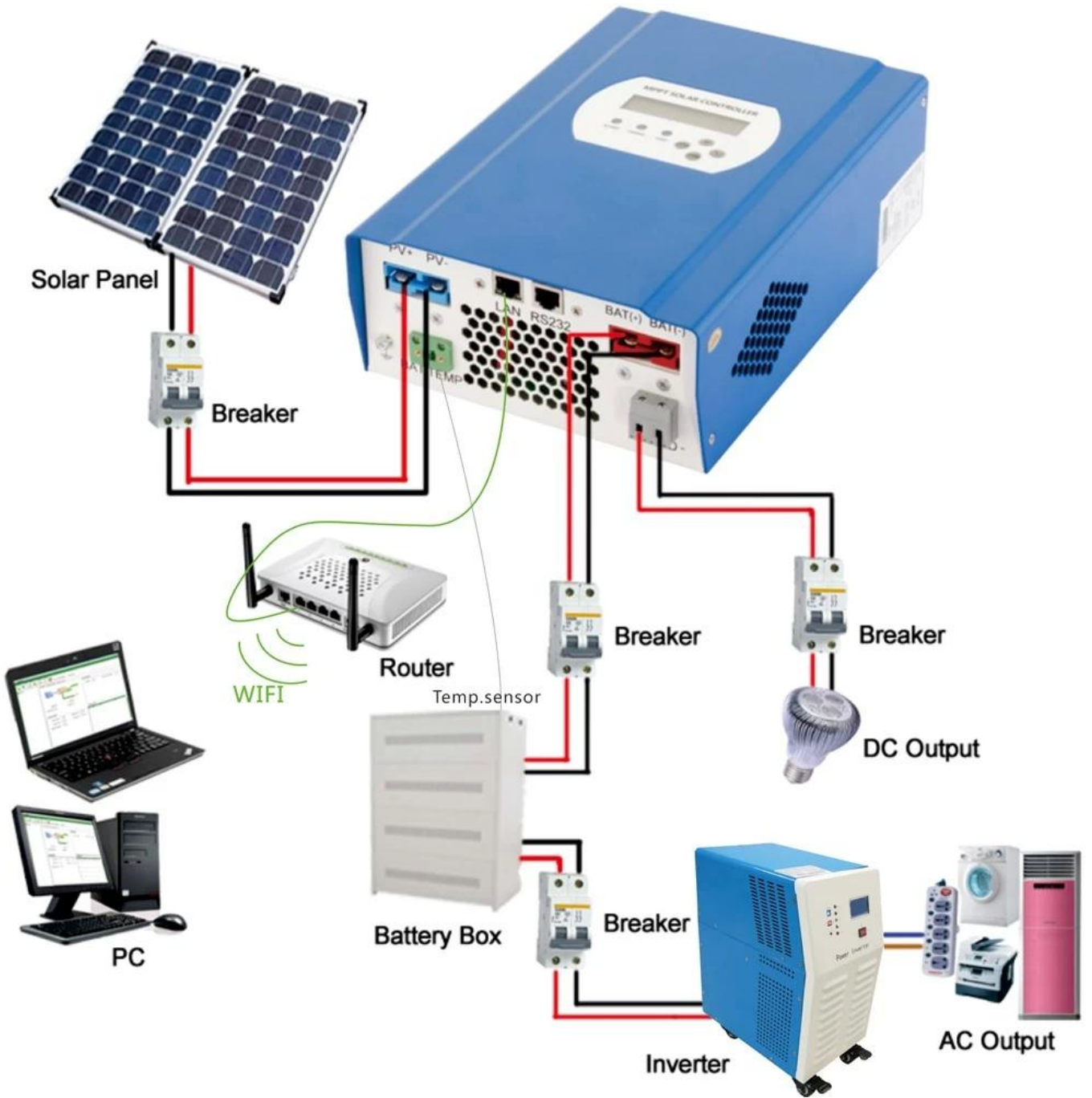
Load control type: **Time Ctrl** Apply

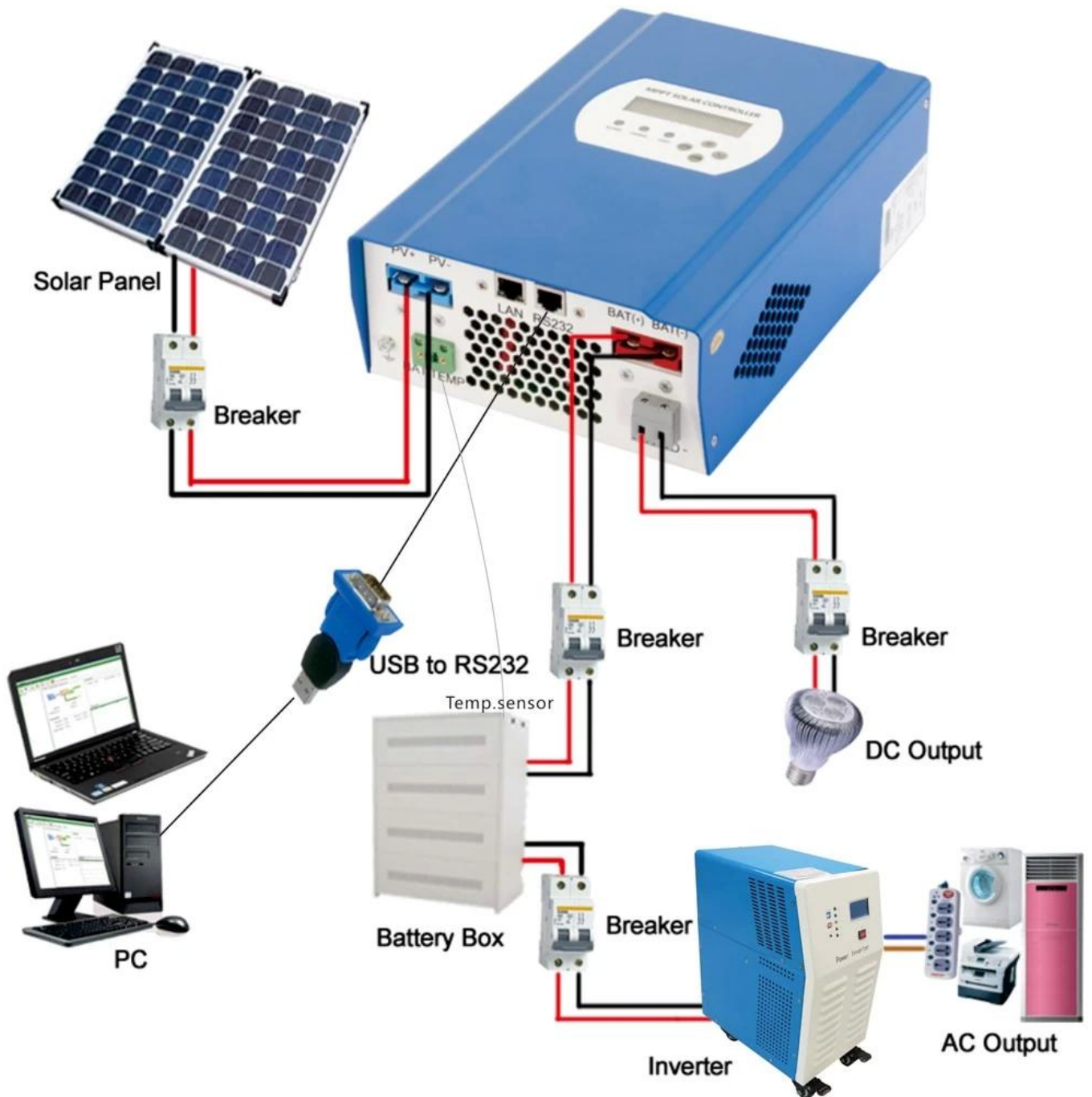
Morning load on time: 10:40 Apply
 Morning load off time: 10:40 Apply
 Night load on time: 10:40 Apply
 Night load off time: 10:40 Apply

Load on PV voltage: 0 Apply
 Load off PV voltage: 0 Apply
 Load delay time(hour): 1 Apply
 Load off battery voltage: 10 Apply



MPPT Connection





R&D and Quality Control

[R&D](#)

[Quality Control](#)

Service and Contact

1. Warranty

1.1 Two years warranty, lifelong technical assistance.

2. Conditions and Terms

2.1 The warranty starts from the delivery date from our factory.

2.2 During the warranty, any defective product will get repaired or replaced for free.

2.3 The warranty is unavailable for those products which are broken by the violence or the carelessness or repaired or altered without the authorization.

3. Lead Time

3.1 Sample orders: 2-5 working days.

3.2 Mass orders: 25 working days at most.

4. Shipment

4.1 Samples By EMS,DHL,FedEx or other express.

4.2 Mass orders by our forwarding agent(by air or by sea).

4.3 Mass orders by your own forwarding agent.