







11. 11

12. With

13. Adopting 105°C 10

14. Compliance 2002/95 / EC

15. Equipment + CD-ROM + + + ;

16. CE ROHS

17.2 3 10

P-SMART2-40A / 50A / 60A -series		40A	50A	60A
	MPPT			
	DC12V / 24V / 48V			
	12V	DC9V	DC15V	
	24V	DC18V	DC30V	
	48Vsystem	DC36V	DC60V	
	12V / 24V / 48Vsystem	≤10S		
	12V / 24V / 48Vsystem	500US		
	12V / 24V / 48Vsystem	≥96.5% ≤99%		
	12V / 24V / 48Vsystem	≥99%		
	MPPT	12V	DC18V	DC150V
		24V	DC34V	DC150V
		48V	DC65V	DC150V
		12V	DC16V	
		24V	DC30V	
		48V	DC60V	
		12V	DC22V	
		24V	DC34V	
		48V	DC65V	
		12V / 24V / 48V	DC160V	
		12V / 24V / 48V	DC150	
		12V / 24V / 48V	DC145V	
		12V	570W	700W
		24V	1130W	1400W
		48V	2270W	2800W
		12V / 24V / 48V		900W
				1700W
				3400W
		12V / 24V / 48V		
		12V / 24V / 48V		
		12V	14.6V	
		24V	29.2V	
		48V	58.4V	
		12V / 24V / 48V	40A	50A
		12V / 24V / 48V	44A	55A
		12V / 24V / 48V	40A	50A
		12V / 24V / 48V	±0.02%/°C	60A
		12V / 24V / 48V	14.2V-25°C* 0.3	
		12V / 24V / 48V	200mV	
		12V / 24V / 48V	≤±1.5%	
		12V / 24V / 48V	200mV	
		12V / 24V / 48V	≤±1.5%	

OEM ODM 36V / 72V / 96V

1	1	
2	2 PC	
3	2 PC	Gallow
4	4	

□	1□	232□RJ45□□□□
6	1□	□□□□
7	1□	□□□
8	2 PC	□□□



Blue



Green



Upper Computer Software

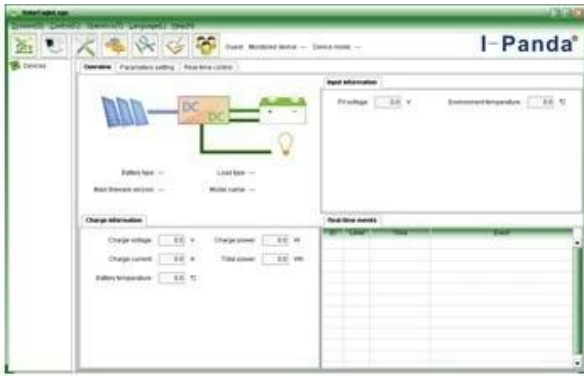


Parts

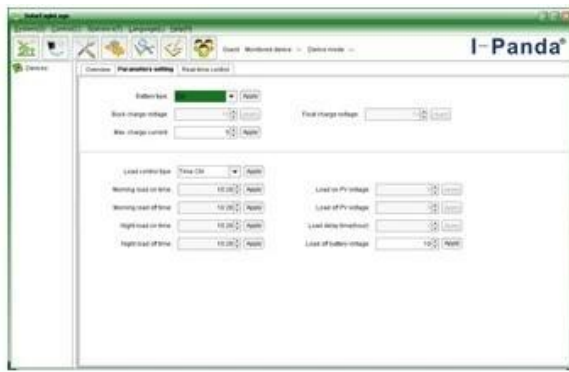


Package

□□□□□□□□



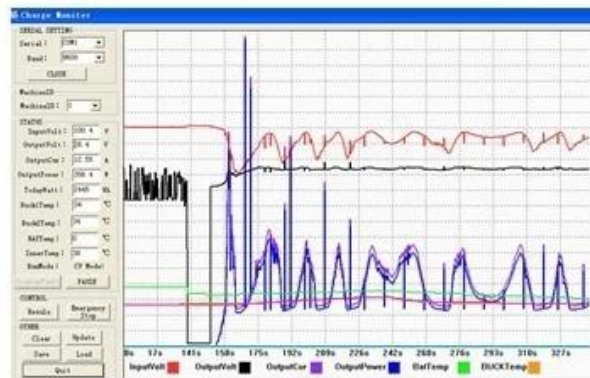
The interface of upper computer software working state



The interface of upper computer software parameter setting state

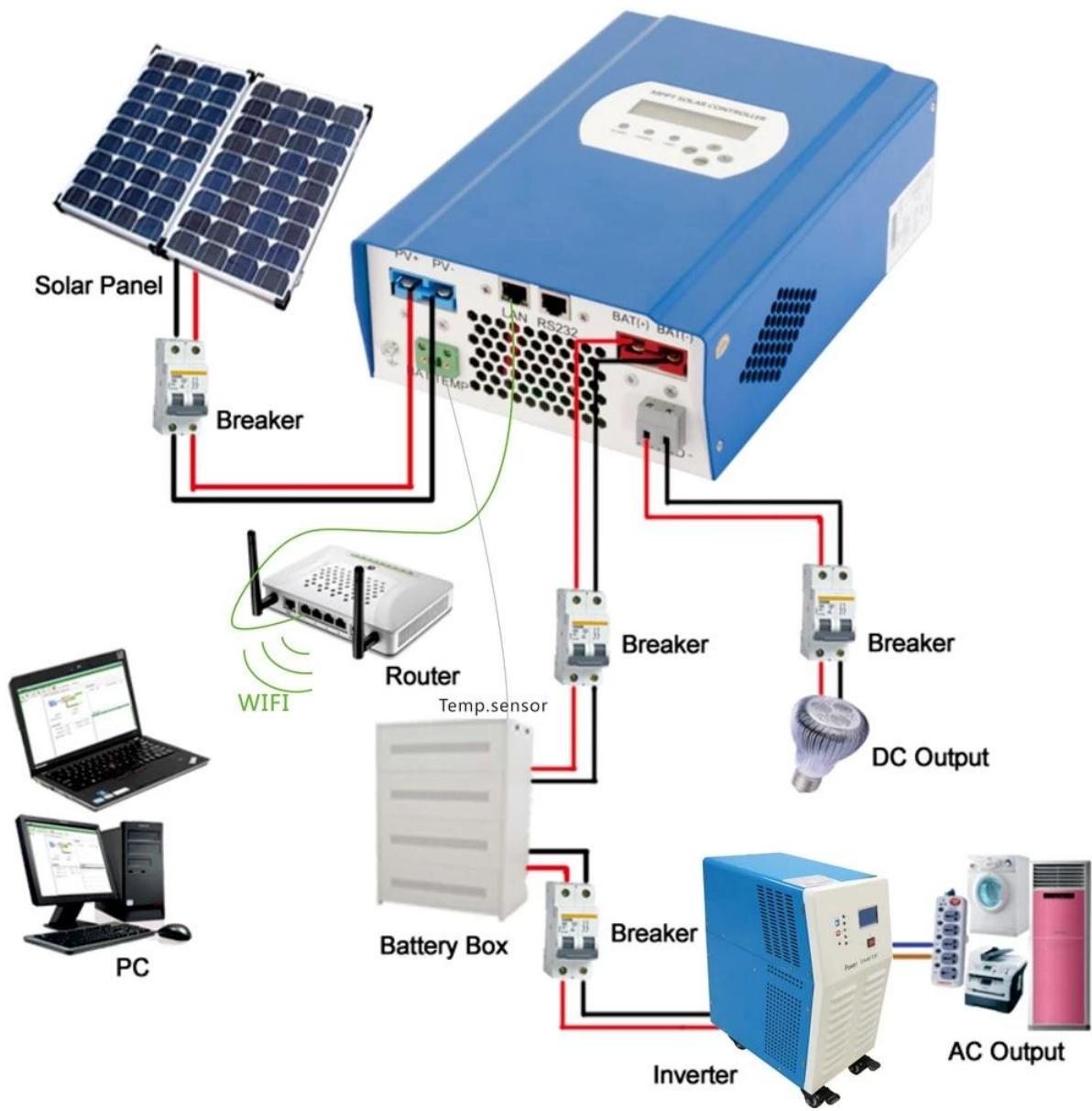


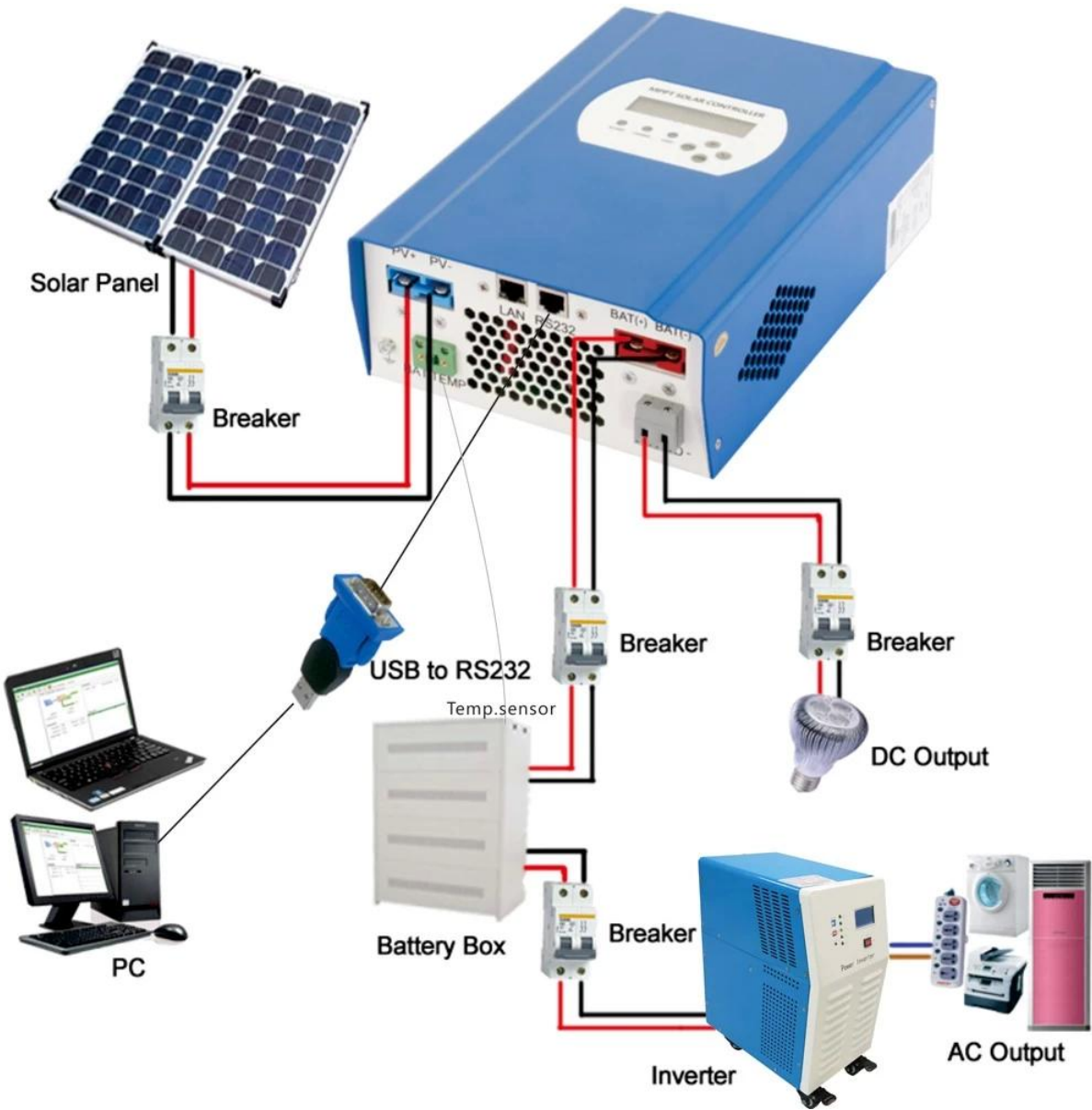
Upper computer software on/off interface and generating capacity record clean interface



The interface of test software working state

**MPPT**





**1. 简介**

**1.1**

1.2

**2. 规格**

2.1

2.2

2.3

2.4

**3. 应用**

3.1

3.2

3.3

**4. 服务**

4.1

4.2

4.3

**5. OEM/ODM**

5.1