



□ 〇〇〇〇〇〇〇〇〇 〇〇〇〇〇〇〇 area.And 〇〇〇〇〇〇〇〇〇 〇〇〇〇 〇〇〇〇〇 〇〇〇 〇〇〇〇〇〇〇 〇〇〇〇〇〇〇 〇〇〇〇〇〇〇.

11. The 〇〇〇〇〇〇〇〇〇 〇〇 〇〇〇〇〇〇〇〇 〇〇〇〇〇 〇〇〇〇〇 〇〇〇〇 〇〇〇〇 〇〇〇〇 〇〇〇〇 〇〇〇〇 〇〇〇〇 〇〇〇〇 〇〇〇〇 〇〇〇〇 〇〇〇〇 〇〇〇〇 〇〇〇〇.

12. With 〇〇〇〇〇〇〇〇〇 〇〇〇 〇〇〇〇〇〇〇 〇〇〇 〇〇〇〇〇〇 〇〇〇〇 〇〇〇〇〇 〇〇〇〇〇〇 〇〇〇〇〇〇〇.

13. Adopting 〇〇〇 〇〇 〇〇〇〇〇 〇〇 〇〇〇〇〇 〇〇〇〇 〇〇 〇〇〇〇〇〇 〇〇〇〇〇〇〇 〇〇〇〇〇〇〇 〇〇〇〇〇〇〇 〇〇〇〇〇〇〇 〇〇〇〇〇〇〇 〇〇〇〇〇〇〇 〇〇〇〇〇〇 〇〇〇〇〇〇 〇〇 〇〇〇〇〇 10 〇〇〇〇 〇〇〇〇〇〇〇〇〇 〇〇〇〇〇〇 〇〇〇〇〇 〇〇°C 105 〇〇.

14. Compliance 2002/95 〇〇〇〇〇〇〇 〇〇 / EC 〇〇〇〇〇〇〇 〇〇〇 〇〇〇〇〇〇〇〇 〇〇〇〇〇〇〇 〇〇〇〇〇〇〇〇〇〇〇 〇〇〇〇 〇〇 〇〇〇〇〇〇 〇〇〇〇〇.

15. Equipment 〇〇〇〇〇 〇〇〇〇〇 : 〇〇〇〇〇〇〇 + CD-ROM (〇〇〇〇〇 + 〇〇〇〇〇〇〇〇〇 〇〇〇 + (〇〇〇〇〇〇〇 〇〇〇〇〇〇〇〇〇 〇〇〇〇〇〇〇 〇〇〇〇〇〇 〇〇〇〇〇 + 〇〇〇 〇〇〇〇〇〇〇〇〇 〇〇〇〇〇〇〇〇).

16. CE 〇〇〇〇〇〇〇〇 〇〇〇〇〇〇 〇〇〇〇〇〇.

〇〇〇〇〇〇〇:

〇〇〇〇〇: I-P-SMART2-40A / 50A / 60A -series	40A	50A	60A
〇〇〇〇〇〇〇 〇〇〇	〇〇〇〇〇〇〇 〇〇〇〇〇〇 〇〇〇〇 〇〇〇〇		
〇〇〇〇〇〇	3 〇〇〇〇 〇〇〇〇 : 〇〇〇〇〇 (MPPT) 〇〇〇〇〇 〇〇〇〇 〇〇〇〇〇〇〇〇 〇〇〇〇〇〇		
〇〇〇〇〇〇 〇〇〇	DC12V / 24V / 48V 〇〇〇〇〇〇〇〇 〇〇〇〇〇〇		
〇〇〇〇〇 〇〇〇	12 〇〇〇〇V	DC9V ~ DC15V	
	24 〇〇〇〇V	DC18V ~ DC30V	
	48Vsystem	DC36V ~ DC60V	
〇〇〇〇〇 〇〇〇	12V / 24V / 48Vsystem ≤10S		
〇〇〇〇〇〇〇〇〇〇〇 〇〇〇〇〇〇〇〇〇	12V / 24V / 48Vsystem 500us		
〇〇〇〇〇 〇〇〇〇〇	12V / 24V / 48Vsystem ≥96.5〇〇 ≤99〇		
PV 〇〇〇〇〇〇〇〇 〇〇〇〇 〇〇〇〇〇	12V / 24V / 48Vsystem ≥99〇		
〇〇〇〇〇〇〇 〇〇〇〇〇	〇〇〇〇〇〇〇 〇〇〇〇〇		
MPPT 〇〇〇〇〇〇〇〇 〇〇〇〇〇 〇〇〇〇	12 〇〇〇〇V	DC18V ~ DC150V	
	24 〇〇〇〇V	DC34 ~ DC150V	
	48 〇〇〇〇V	DC65 ~ DC150V	
〇〇〇〇 〇〇〇〇〇〇〇〇 〇〇〇〇〇 〇〇〇〇〇 〇〇〇〇〇〇	12 〇〇〇〇V	DC16V	
	24 〇〇〇〇V	DC30V	
	48 〇〇〇〇V	DC60V	
〇〇〇〇 〇〇〇〇〇〇〇 〇〇〇〇〇〇〇 〇〇〇〇〇 〇〇〇〇〇	12 〇〇〇〇V	DC22V	
	24 〇〇〇〇V	DC34V	
	48 〇〇〇〇V	DC65V	
〇〇〇〇 DC 〇〇〇〇〇	12V / 24V / 48V 〇〇〇〇	DC160V	
〇〇〇〇 〇〇〇〇〇 〇〇〇〇〇〇 〇〇〇〇〇 〇〇〇〇〇〇	12V / 24V / 48V 〇〇〇〇	DC150	
〇〇〇〇〇〇〇〇 〇〇〇〇 〇〇〇〇〇〇〇 〇〇〇〇〇 〇〇〇〇〇	12V / 24V / 48V 〇〇〇〇	DC145V	
〇〇〇〇. PV 〇〇〇〇〇〇	12 〇〇〇〇V	700W	900W
	24 〇〇〇〇V	1130W	1400W
	48 〇〇〇〇V	2270W	2800W
〇〇〇〇〇〇〇 〇〇〇〇〇	〇〇〇〇〇〇〇 〇〇〇〇〇		
〇〇〇〇〇〇〇〇〇 〇〇 〇〇〇〇〇〇〇 〇〇〇) 〇〇〇〇〇〇〇〇 〇〇〇〇〇〇 〇〇〇〇〇 GEL)	12V / 24V / 48V 〇〇〇〇	〇〇〇〇〇〇〇〇〇〇 〇〇〇〇〇〇 〇〇〇〇〇 〇〇 〇〇〇〇〇〇〇 〇〇〇〇〇〇 〇〇〇〇〇〇 〇〇〇〇〇〇 〇〇〇〇〇〇	
〇〇〇〇〇〇〇 〇〇〇〇	12V / 24V / 48V 〇〇〇〇	〇〇〇〇〇〇〇〇〇 〇〇〇 〇〇〇〇 〇〇〇〇 〇〇〇〇 〇〇〇〇 〇〇〇〇 〇〇〇〇.	
〇〇〇〇〇〇〇〇 〇〇〇〇〇〇 〇〇〇〇〇〇	12V / 24V / 48V 〇〇〇〇	〇〇〇〇〇〇〇〇 〇〇〇 〇〇〇〇 〇〇〇〇 〇〇〇〇 〇〇〇〇 〇〇 〇〇〇〇〇〇 〇〇〇〇.	
〇〇〇〇〇 〇〇〇〇〇 〇〇〇〇 〇〇 〇〇	12 〇〇〇〇V	14.6V	
	24 〇〇〇〇V	29.2V	
	48 〇〇〇〇V	58.4V	
〇〇〇〇〇〇 〇〇〇〇〇〇〇 〇〇〇	12V / 24V / 48V 〇〇	40A	50A
〇〇〇〇〇 〇〇〇〇 〇〇〇〇〇	12V / 24V / 48V 〇	44A	55A
〇〇〇〇〇〇 〇〇〇〇〇〇 〇	12V / 24V / 48V 〇	40A	50A
〇〇〇			60A
〇〇〇〇〇〇 〇〇〇 〇	12V / 24V / 48V 〇	± 0.02 / °C	
〇〇〇〇〇〇 〇	12V / 24V / 48V 〇	14.2V- (0.3 * (°C 25 〇〇〇〇〇 〇〇〇 〇	
〇〇〇〇〇〇) 〇〇〇〇	12V / 24V / 48V 〇	200mV	
〇〇〇〇〇 〇〇〇〇〇〇〇 〇	12V / 24V / 48V 〇	≤ ± 1.5〇	
〇〇〇〇 〇〇〇〇〇 〇	12V / 24V / 48V 〇	200mV	
〇〇〇〇〇〇〇〇 〇〇〇〇 〇	12V / 24V / 48V 〇	≤ ± 1.5〇	
〇〇〇〇 〇	〇〇 〇〇〇〇〇 LAN		
〇〇〇〇〇〇 〇	12V / 24V / 48V 〇	40A	
〇〇〇〇〇 〇	12V / 24V / 48V 〇	30 〇〇〇〇A * 2	
〇〇〇〇〇 〇	12V / 24V / 48V 〇	〇〇〇〇 〇 〇〇〇〇 〇〇〇〇〇 〇 〇〇 / 〇〇〇〇〇〇 〇 〇〇〇〇〇 〇〇〇〇〇 〇	
ON / OFF 〇	12V / 24V / 48V 〇	ON / OFF	

PV	12V / 24V / 48V	PV PV
PV /	12V / 24V / 48V	PV
	12V / 24V / 48V	1 10.5
RS232		
RS232	12V / 24V / 48V	COM
LAN		
LAN	12V / 24V / 48V	IP TCP
Temperature		
		95 °C
		3 85
Acoustic		
		≤40dB
		105 °C
Dimensions		
DxWxH (mm)		270 * 185 * 90
N.G (mm)		3
G.N (mm)		3.6
		CE FCC
EMC		EN61000
		IP21
Environment		
		0 ~ 90% RH
		0 ~ 3000M
		-20 °C ~ + 40 °C
		-40 °C ~ + 75 °C
		70 ~ 106kpa



Blue



Green



Upper Computer

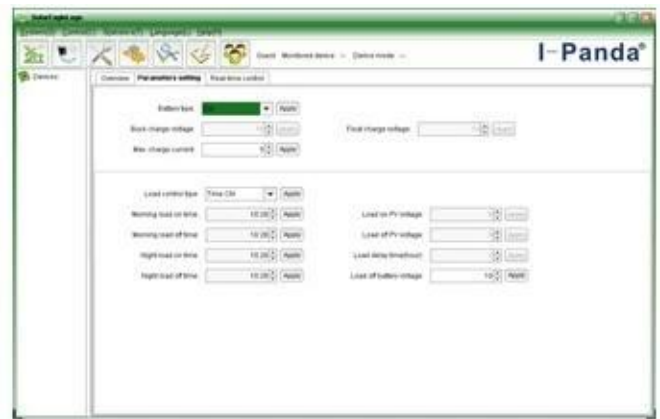


Package

العلوي برامج الكمبيوتر واختبار البرمجيات



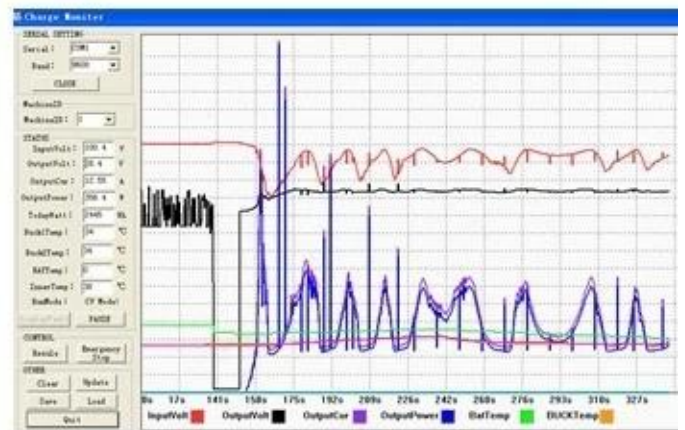
The interface of upper computer software working state



The interface of upper computer software parameter setting state



Upper computer software on/off interface and generating capacity record clean interface



The interface of test software working state

انصال MPPT



الشهادات

[ISO2008](#)

[ISO2004](#)

[CE](#)

[FCC](#)

[ROHS](#)

شركة





