

Feature:

1. MPPT charge mode, conversion efficiency upto 99%, can save 30%~60% of the power than traditional controller.
2. With high efficient MPPT operation scheme and adopting TI28035 chip, make the Solar panels utilization rate upto 99%.
3. Intelligent design, the device can be upgraded online, customers enjoy the lifelong upgrade service.
4. Compliance with the 2002/95/EC environment protecting demand, doesn't include the Cadmium, hydride and fluoride
5. Adopting the well-known brand components, the devices can suffer the temperature not less than 105°C. The service life is designed to extend to 10 years in theory.
6. Charge mode: three stages (fast charge, constant charge, floating charge)
7. 12V/24V/48V system auto recognize for easy control.
8. Nominal maximum solar input is DC 150V
9. Connected Battery Type choosing: Sealed lead acid, vented, Gel, NiCd battery. Other types of the batteries can also be defined.
10. LCD and LEDs show all kinds of parameter like products model, PV input voltage, battery voltage, charge current, charge power, work condition, and also can add customers' company name and website.
11. Communication Port. RS232 communication can provide communication protocol, This make the unified and integrated management more convenient to customers.
12. With providing a Microsoft by connecting with PC that can show the working state and all parameters in 7 languages.
13. Extensible LAN remote control.
14. Equipment integrity: controller+CD-ROM(microcomputer software) + communication wire+Anderson terminals;
15. CE, ROHS, FCC, PSE certifications approved. The device also can support to pass the other certifications.
16. 2 years warranty. And 3~10 years extended warranty service also can be provided.

Parameter:

| Model:I-P-MS-DC12V/24V/48V-series | | 40A | 50A | 60A |
|------------------------------------|--|-----------------------|-----|-----|
| Charge Mode | Maximum Power Point Tracking | | | |
| Method | 3 stages: fast charge(MPPT),constant voltage,floating charge | | | |
| System Type | DC12V/24V/48V | Automatic recognition | | |
| System Voltage | 12V system | DC9V~DC15V | | |
| | 24V system | DC18V~DC30V | | |
| | 48Vsystem | DC36V~DC60V | | |
| Soft Start Time | 12V/24V/48Vsyste m | ≤10S | | |
| Dynamic Response Recovery Time | 12V/24V/48Vsyste m | 500us | | |
| Conversion Efficiency | 12V/24V/48Vsyste m | ≥96.5%,≤99% | | |
| PV Modules Utilization Rate | 12V/24V/48Vsyste m | ≥99% | | |
| Input Characteristics | | | | |
| MPPT Working Voltage and Range | 12V system | DC18V~DC150V | | |
| | 24V system | DC34~DC150V | | |
| | 48V system | DC65~DC150V | | |
| Low Voltage Input Protection Point | 12V system | DC16V | | |
| | 24V system | DC30V | | |
| | 48V system | DC60V | | |
| Low Voltage Input Recovery Point | 12V system | DC22V | | |
| | 24V system | DC34V | | |
| | 48V system | DC65V | | |
| Max DC Voltage | 12V/24V/48V svstem | DC160V | | |

| | | | | |
|--|---|--|-------|-------|
| Input Overvoltage Protection Point | 12V/24V/48V system | DC150V | | |
| Input Overvoltage Recovery Point | 12V/24V/48V system | DC145V | | |
| Max. PV Power | 12V system | 570W | 700W | 900W |
| | 24V system | 1130W | 1400W | 1700W |
| | 48V system | 2270W | 2800W | 3400W |
| Output Characteristics | | | | |
| Selectable Battery Types (Default type is GEL battery) | 12V/24V/48Vsystem | Sealed lead acid, vented, Gel, NiCd battery (Other types of the batteries also can be defined) | | |
| Constant Voltage | 12V/24V/48V system | Please check the charge voltage according to the battery type form. | | |
| Floating Charge Voltage | 12V/24V/48V system | | | |
| Over Charge Protection Voltage | 12V system | 14.6V | | |
| | 24V system | 29.2V | | |
| | 48V system | 58.4V | | |
| Rated Output Current | 12V/24V/48V system | 40A | 50A | 60A |
| Current-limiting Protection | 12V/24V/48V system | 44A | 55A | 66A |
| Temperature Factor | 12V/24V/48V system | ±0.02%/°C | | |
| Temperature Compensation | 12V/24V/48V system | 14.2V-(The highest temperature-25°C)*0.3 | | |
| Output Ripples(peak) | 12V/24V/48V system | 200mV | | |
| Output Voltage Stability Precision | 12V/24V/48V system | ≤±1.5% | | |
| Display | | | | |
| LCD display | Input,output parameter and output power etc (check the LCD display instruction) | | | |
| LED display | 3 LEDs indicates:Fault indicate light,charge indicate light,power source indicate light(check the LED instruction) | | | |
| Software Control through PC(communication port) | RS232 (matching) or LAN(optional) | | | |
| Protection | | | | |
| Input Low Voltage Protection | Check the input characteristics | | | |
| Input Overvoltage Protection | Check the input characteristics | | | |
| Input Polarity Reversal Protection | yes | | | |
| Output Overvoltage Protection | Check the output characteristics | | | |
| Output Polarity Reversal Protection | yes | | | |
| Short-circuit Protection | Recover after eliminating the Short-circuit fault,no problem for long term Short-circuit | | | |
| Temperature Protection | 95°C | | | |
| Temperature protection | Above 85°C,decrease the output power,decrease 3A per degree. | | | |
| Other Parameters | | | | |
| Noise | ≤40dB | | | |
| Thermal methods | Forced air cooling,fan speed rate regulated by temperature,when inner temperature is too low,fan ran slowly or stop;when controller stop working,fan also stop ran. | | | |
| Components | World brand raw materials. Compliance with EU standards.All rated temperature of electrolytic capacitors not less than 105°C | | | |
| Smell | No peculiar smell and and toxic substances. | | | |
| Environment Protection | Meet the 2002/95/EC,no cadmium hydride and fluoride | | | |
| Physical | | | | |
| Measurement DxWxH(mm) | 270*185*90 | | | |
| N.G(kg) | 3 | | | |
| G.N(kg) | 3.6 | | | |
| Color | Blue/Green (optional) | | | |
| Safety | CE,RoHS, PSE,FCC | | | |
| EMC | EN61000 | | | |
| Type of Mechanical Protection | IP21 | | | |
| Environment | | | | |
| Humidity | 0~90%RH (no condense) | | | |

| | |
|-----------------------|-------------|
| Altitude | 0~3000m |
| Operating Temperature | -20℃ ~ +40℃ |
| Storage Temperature | -40℃ ~ +75℃ |
| Atmospheric Pressure | 70~106kPa |

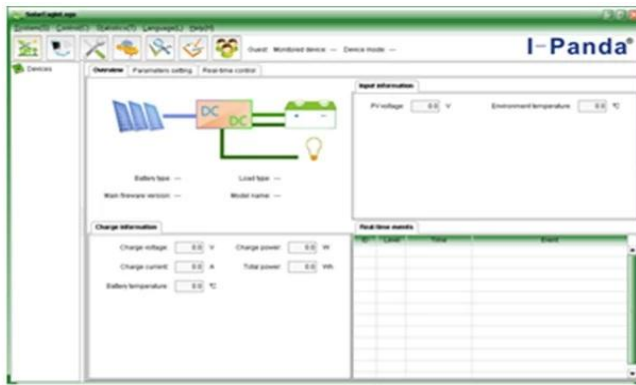
Note:We provide OEM and ODM service.The 36V/72V/96V model also can be custom made for you.

Product Parts:

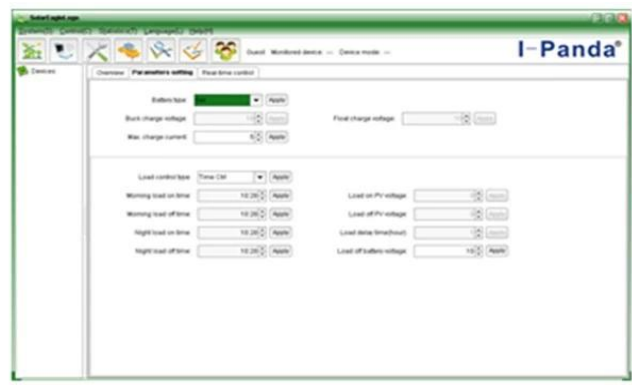
| NO. | Quantity | Description |
|-----|----------|--|
| 1 | 1 unit | Charge controller |
| 2 | 2 pc | Terminals |
| 3 | 2 pc | Gallow pulley (For install the controller on the wall) |
| 4 | 4 set | Screw (For install the controller on the wall) |
| 5 | 1 pc | 232 turn to RJ45 communication cable |
| 6 | 1 pc | User manual |
| 7 | 1 pc | Temperature sensing wire |
| 8 | 2 pc | Fuse wire |



Upper Computer Software and Test Software



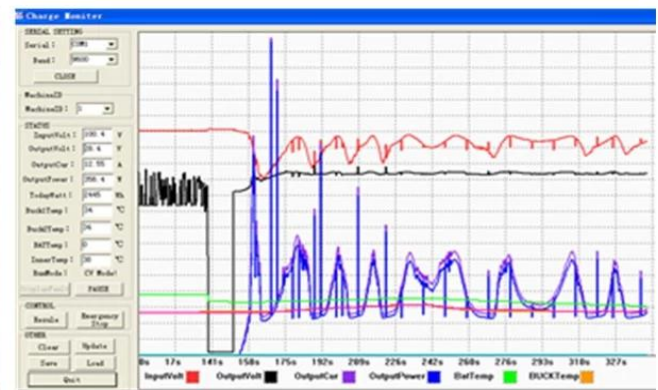
The interface of upper computer software working state



The interface of upper computer software parameter setting state



Upper computer software on/off interface and generating capacity record clean interface



The interface of test software working state

Note: 1) Attachment have upper computer software , suitable for all computer system .

2) Trafficker will provide neutral upper computer software and CD ,or software with customer's logo .

3) WIN7 , WIN8 system user , please log in as administrator: More details please check the manul .

Other Parameters

Details please check design brief □technical documents □product manual .

