



11. 11

12. With

13. Adopting 105°C 10

2002/95 / EC 14. Compliance

15. Equipment + CD-ROM + + + + ;

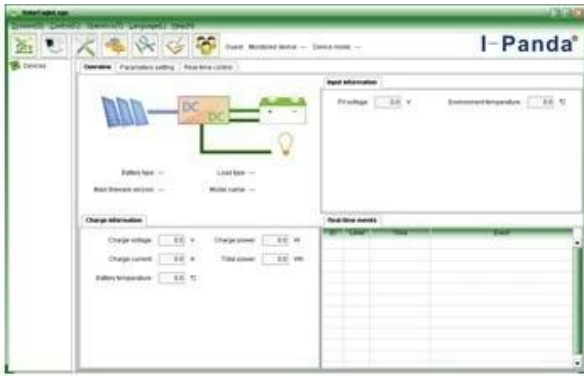
16. CE ROHS

17. 3 10

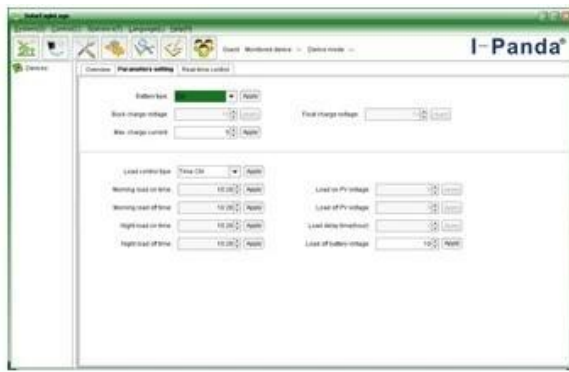
P-SMART2-40A / 50A / 60A -series		40A	50A	60A
MPPT	3			
DC12V / 24V / 48V				
12V		DC9V	DC15V	
24V		DC18V	DC30V	
48Vsystem		DC36V	DC60V	
12V / 24V / 48Vsystem	≤10S			
12V / 24V / 48Vsystem	500US			
12V / 24V / 48Vsystem	≥96.5% ≤99%			
PV	12V / 24V / 48Vsystem ≥99%			
MPPT	12V	DC18V	DC150V	
	24V	DC34V	DC150V	
	48V	DC65V	DC150V	
	12V	DC16V		
	24V	DC30V		
	48V	DC60V		
	12V	DC22V		
	24V	DC34V		
	48V	DC65V		
DC	12V / 24V / 48V	DC160V		
	12V / 24V / 48V	DC150		
	12V / 24V / 48V	DC145V		
PV	12V	570W	700W	900W
	24V	1130W	1400W	1700W
	48V	2270W	2800W	3400W
GEL	12V / 24V / 48V			
	12V / 24V / 48V			
	12V	14.6V		
	24V	29.2V		
	48V	58.4V		
	12V / 24V / 48V	40A	50A	60A
	12V / 24V / 48V	44A	55A	66A
	12V / 24V / 48V	40A	50A	60A
	12V / 24V / 48V	±0.02%/°C		
	12V / 24V / 48V	14.2V-25°C* 0.3		
	12V / 24V / 48V	200mV		
	12V / 24V / 48V	≤±1.5%		
	12V / 24V / 48V	200mV		
	12V / 24V / 48V	≤±1.5%		

OEM ODM 36V / 72V / 96V

NO		
1	1	
2	2 PC	
3	2 PC	Gallow
4	4	



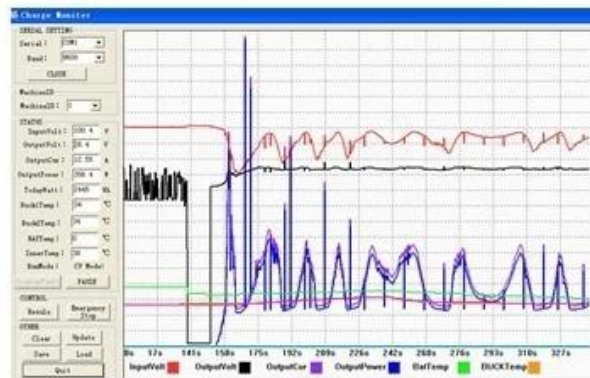
The interface of upper computer software working state



The interface of upper computer software parameter setting state



Upper computer software on/off interface and generating capacity record clean interface



The interface of test software working state

MPPT

