

電圧	12V / 24V / 48V	44A	55A	66A
電流	12V / 24V / 48V	40A	50A	60A
精度	12V / 24V / 48V	±0.02%/°C		
精度	12V / 24V / 48V	14.2V-25°C* 0.3		
電圧変動	12V / 24V / 48V	200mV		
電圧変動	12V / 24V / 48V	≤±1.5%		
電圧変動・電圧変動	12V / 24V / 48V	200mV		
電圧変動	12V / 24V / 48V	≤±1.5%		
電圧	LAN			
電圧	12V / 24V / 48V	40A		
電圧&NBS	12V / 24V / 48V	30A*2		
電圧	12V / 24V / 48V	1000 / 1000000		
ON / OFF	12V / 24V / 48V	ON / OFF		
PV	12V / 24V / 48V	PV		
PV	12V / 24V / 48V	PV		
電圧	12V / 24V / 48V	10.5V 1000000		
電圧	12V / 24V / 48V	COM		
LAN	12V / 24V / 48V	IP ; TCP		
電圧	95°C			
電圧	85°C 3A			
電圧	≤40dB			
電圧	EU 105°C			
電圧	2002/95 / EC			
電圧	270 * 185 * 90			
N.G	3			
G.N	3.6			
電圧	CE RoHS PSE FCC			
EMC	EN61000			
電圧	IP21			
電圧	90%RH			
電圧	3000			
電圧	-20°C + 40°C			
電圧	-40°C + 75°C			
電圧	70 / 106kPa			

電圧 OEM ODM service. The 36V / 72V / 96V

電圧

NO.	Quantity	Description
1	1 unit	Charge controller
2	2 pc	Terminals
3	2 pc	Gallow pulley (For install the controller on the wall)
4	4 set	Screw (For install the controller on the wall)
5	1 pc	232 turn to RJ45 communication cable
6	1 pc	User manual
7	1 pc	Temperature sensing wire
8	2 pc	Fuse wire



Blue Appearance



Green



Upper Computer Software

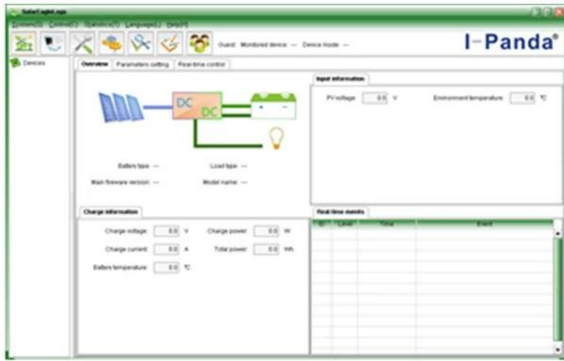


Parts

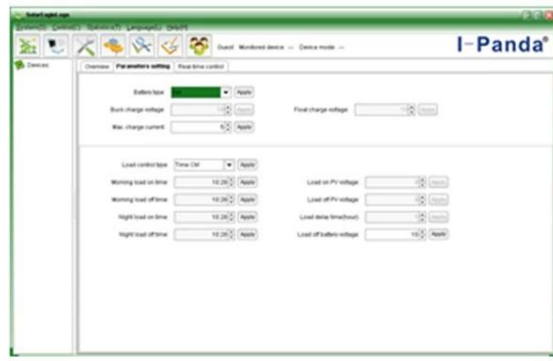


Package

□□□□□□□□□□□□□□□□□□□□□□□□□□□□□□□□



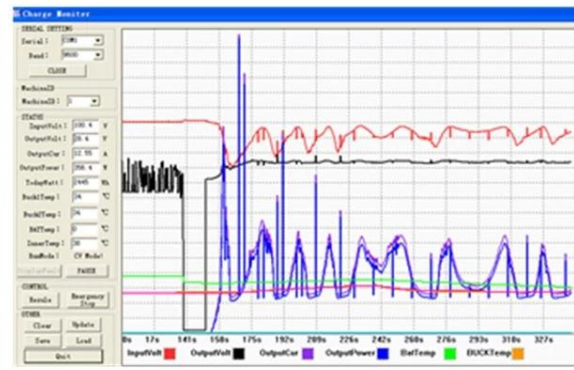
The interface of upper computer software working state



The interface of upper computer software parameter setting state



Upper computer software on/off interface and generating capacity record clean interface

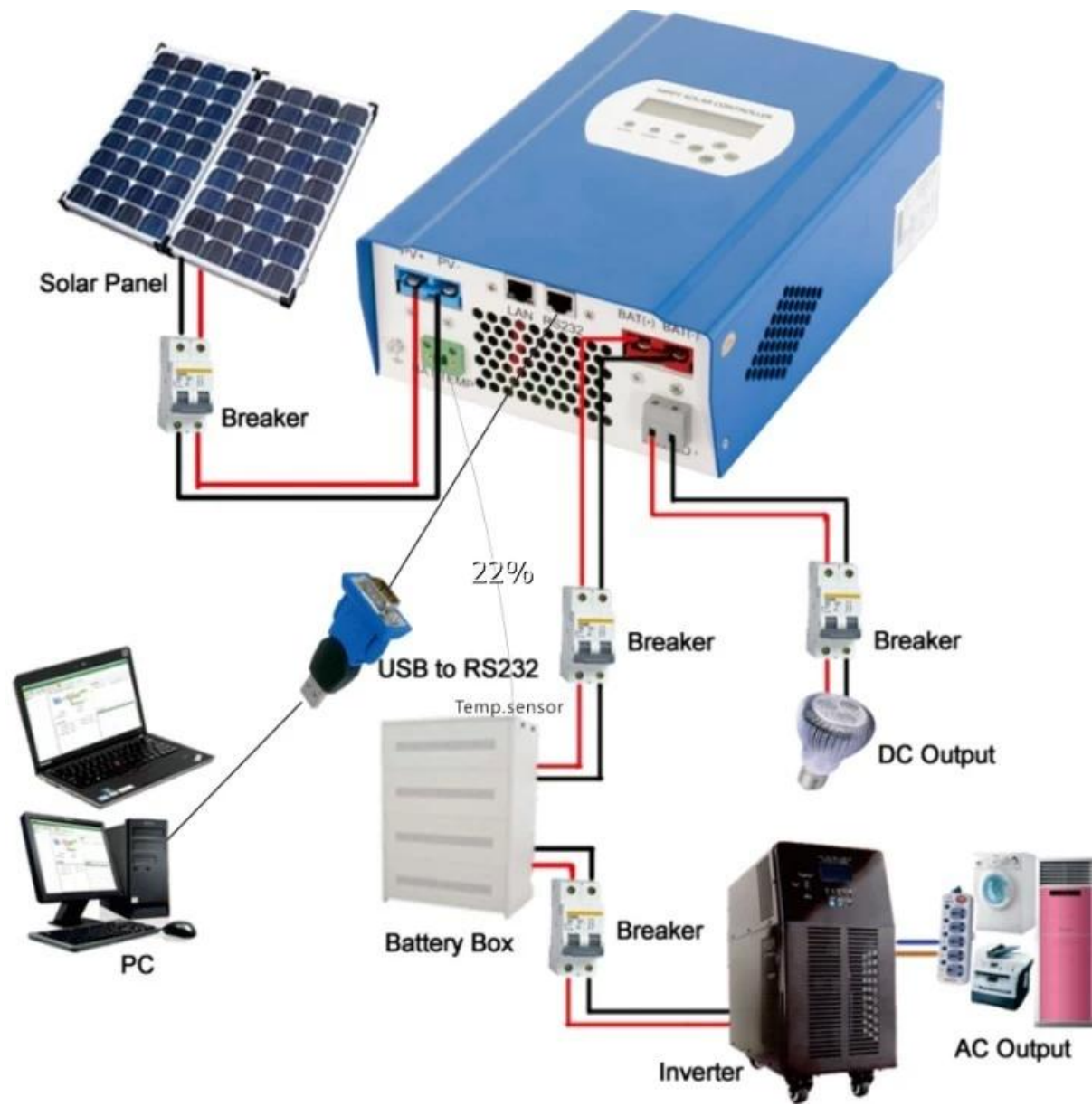


The interface of test software working state

1 administrator. More 3 WIN7 IN8



1 MPPT



-
- 1□□□□□□□□□□□□□□□□□□
- 2□□□□□□□□□□□□□□□□□□

□□□□□□□□
 □□□□□□□□□□□□□□□□□□□□