

MPPT

MPPT 20A/30A

30/60

PV RS

232 / LAN

P-TPI2 / UPS







**特 性**

1. 30-60Vの電圧範囲に対応
1. 95-99%の効率を実現
2. 2段階の電圧設定が可能
3. 2段階の電圧設定が可能
2. IPアドレス設定が可能 / IPアドレスを設定可能
4. DC電圧を4段階で設定可能
3. LAN通信 / RS232ポート
4. 100mAの電流で動作可能

**仕様**

1. MPPT効率 99%
2. 12V / 24V / 48V対応
3. PV電圧 DC150V
4. 電圧設定
5. 電圧設定
6. Charge電圧 3段階 / It電圧
7. Discharge電圧 / OFF / PV電圧 + ON
8. Recommended電圧 / NiCd電圧
9. Most LCD / LED電圧
10. RS232 / LAN / IP電圧 area. And電圧

- 11. 11
- 12. With
- 13. Adopting 105°C. The 10
- 2002/95 / EC 14. Compliance
- 15. Equipment + CD-ROM + + +
- 16. CE ROHS

MODEL	P-SMART2-20A / 25A / 30A - SERIES	20A	25A	30A
		12V 24V 48V		
		≤10S		
		500US		
		≥96.5 ≤99		
		≥99		
MPPT	12V 24V 48V	DC18V DC34 DC65	DC150V DC150V DC150V	
	12V 24V 48V	DC16V DC30V DC60V		
	12V 24V 48V	DC22V DC34V DC65V		
		DC160V DC150 DC145V		
	12V 24V 48V	286W 572W 1144W	357W 715W 1430W	429W 858W 1716W
		NiCd		
			DC10V DC15	DC12V
		12V / 24V / 48V SYS		
		12V / 24V / 48V SYS		
		20A 25A	25A 30A	30A 35A
		±0.02/°C		
		14.2V-25°C* 0.3		
		200mV		
		≤±1.5		
		200mV		
		≤±1.5		
		LAN		
		30A		
		420W	840W	1680W
		40A*2		
		ON / OFF		
		PV		

PV	PV
	10.5
<b>COM</b>	
RS232	COM
LAN	IP TCP
<b>PROTECTIONS</b>	
	95°C
	85°C 3A
<b>ENVIRONMENT</b>	
	≤40dB
	EU 105°C substances.All 2002/95 / EC
<b>PHYSICAL</b>	
DxWxH	270 * 185 * 90
N.G	2.1
G.N	2.4
	CE RoHS PSE FCC
EMC	EN61000
	IP21
<b>ENVIRONMENT</b>	
	0 90 RH
	0 3000
	-20°C + 40°C
	-40°C + 75°C
	70 106kPa

OEM ODM 36V / 72V / 96V

NO		
1	1 PC	
2	2 PC	Gallow
3	4	
4	1 PC	RJ45 232
5	1 PC	
6	1 PC	
7	2 PC	



Blue



Green



Upper Computer

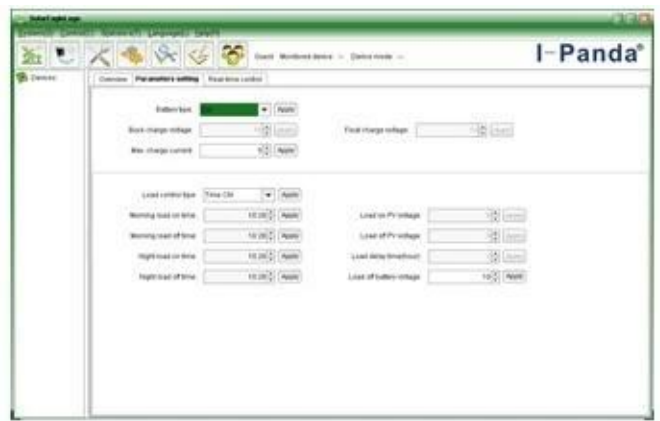


Package

□□□□□□□□□□□□□□□□□□□□□□□□



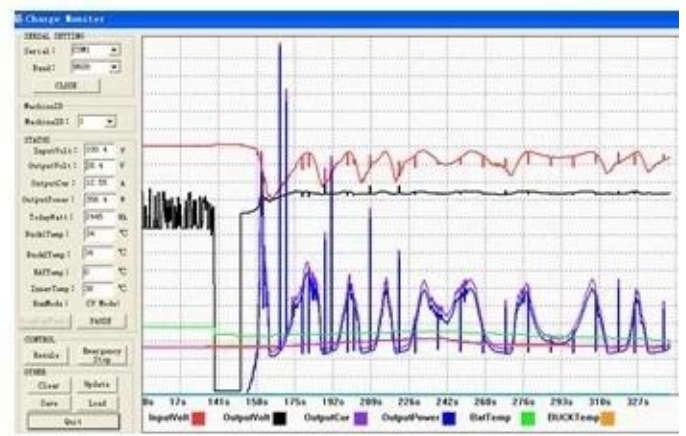
The interface of upper computer software working state



The interface of upper computer software parameter setting state



Upper computer software on/off interface and generating capacity record clean interface



The interface of test software working state

MPPT□□□



□□  
[ISO2008](#)  
[ISO2004](#)  
[CE](#)  
[FCC](#)  
[ROHS](#)

□□









