

15.2 10 3 10

16. CE ROHS

MODEL I-P-SMART2-20A / 25A / 30A -SERIES		20A	25A	30A
		12V 24V 48V		
		≤10S		
		500US		
		≥96.5% ≤99%		
PV		≥99%		
INPUT				
MPPT	12V	DC18V DC150V		
	24V	DC34V DC150V		
	48V	DC65V DC150V		
	12V	DC16V		
	24V	DC30V		
	48V	DC60V		
	12V	DC22V		
	24V	DC34V		
	48V	DC65V		
DC		DC160V		
		DC150		
		DC145V		
PV	12V	286W	357W	429W
	24V	572W	715W	858W
	48V	1144W	1430W	1716W
CHARGE				
		NiCd		
			DC10V DC15V / 12V	
		12V / 24V / 48V SYS		
		12V / 24V / 48V SYS		
		20A	25A	30A
		25A	30A	35A
		±0.02%/°C		
		14.2V -25°C* 0.3		
		200mV		
		≤±1.5%		
		200mV		
		≤±1.5%		
DISCHARGE				
		LAN		
		30A		

Power	420W	840W	1680W
Input	40A*2		
Output	/		
ON / OFF	ON / OFF		
PV	PV		
PV	PV		
Protection	10.5 1		
PORT			
RS232	COM		
LAN	IP TCP		
PROTECTIONS			
Protection	/		
Protection			
Protection			
Protection			
Protection			
Protection			
Protection	95°C		
Protection	85°C 3A		
ENVIRONMENT			
Sound	≤40dB		
Sound			
Sound	EU 2002/95 / EC substances. All 105°C		
PHYSICAL			
DxWxH	270 * 185 * 90		
N.G	2.1		
G.N	2.4		
	/		
EMC	CE RoHS PSE FCC		
EMC	EN61000		
EMC	IP21		
ENVIRONMENT			
Humidity	0-90%RH		
Humidity	0-3000		
Temperature	-20°C + 40°C		
Temperature	-40°C + 75°C		
Pressure	70-106kPa		



Blue



Green



Upper Computer

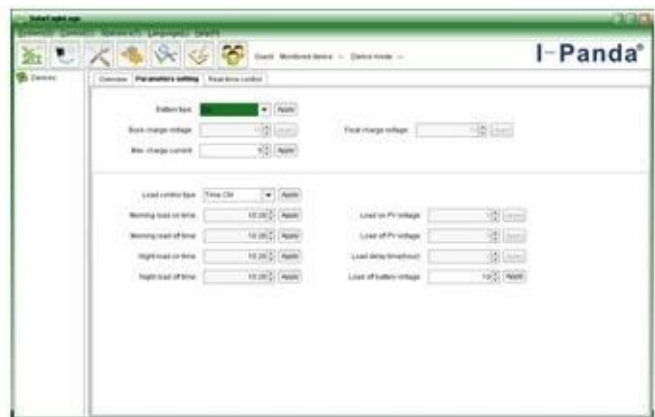


Package

□□□□□□□□□□□□□□□□□□□□□□□□



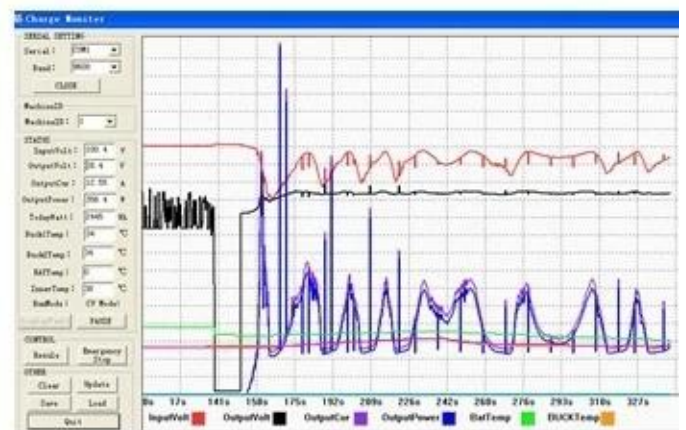
The interface of upper computer software working state



The interface of upper computer software parameter setting state



Upper computer software on/off interface and generating capacity record clean interface



The interface of test software working state

MPPT□□□



[ISO2008](#)
[ISO2004](#)
[CE](#)
[FCC](#)
[ROHS](#)

□□□□□□□□

1. □□
- 1.2 □□□□□□□□□□□□
2. □□□□□
- 2.1 □□□□□□□□□□□□□□□□
- 2.2 □□□□□□□□□□□□□□□□□□□□□□□□
- 2.3 □□□□□□□□□□□□□□□□□□□□□□□□□□□□
-
3. □□□□□□□
- 3.1 □□□□□□□ 5-7 □□□□□□□□□□□□□□□□□□
- 3.2 □□□□□□□ 7-15 □□□□□□□□□□□□□□□□□□

3.3 25

4.

EMS DHL Express 4.1

4.2

4.3

5. OEM ODM

5.1 OEM ODM