



6.Charge efficiency 30% or more. It is 100% or more.

7.Discharge efficiency ON / OFF PV or PV + ON

8.Recommended NiCd battery

9.Most LCD or LED PV

10.RS232 LAN IP area. And

11.

12.With

13.Adopting 105°C. the 10

14.Compliance 2002/95 / EC

15.Equipment + CD-ROM + + +

16.CE ROHS

P-SMART2-40A / 50A / 60A -series		40A	50A	60A
Input	30V or more MPPT			
Output	DC12V / 24V / 48V			
Output	12V	DC9V	DC15V	
Output	24V	DC18V	DC30V	
Output	48V system	DC36V	DC60V	
Output	12V / 24V / 48V system	≤10S		
Output	12V / 24V / 48V system	500US		
Output	12V / 24V / 48V system	≥96.5%	≤99%	
Output	12V / 24V / 48V system	≥99%		
MPPPT	12V	DC18V	DC150V	
	24V	DC34V	DC150V	
	48V	DC65V	DC150V	
	12V	DC16V		
	24V	DC30V		
	48V	DC60V		
	12V	DC22V		
	24V	DC34V		
	48V	DC65V		
DC	12V / 24V / 48V	DC160V		
	12V / 24V / 48V	DC150		
	12V / 24V / 48V	DC145V		
PV	12V	570W	700W	900W
	24V	1130W	1400W	1700W
	48V	2270W	2800 W	3400W
Temperature	12V / 24V / 48V	Operating temperature range		
Temperature	12V / 24V / 48V	Storage temperature range		
Temperature	12V / 24V / 48V	Temperature range		
Temperature	12V	14.6V		
Temperature	24V	29.2V		
Temperature	48V	58.4V		
Temperature	12V / 24V / 48V	40A	50A	60A
Temperature	12V / 24V / 48V	44A	55A	66A
Temperature	12V / 24V / 48V	40A	50A	60A
Temperature	12V / 24V / 48V	±0.02%/°C		
Temperature	12V / 24V / 48V	14.2V-25°C* 0.3		
Temperature	12V / 24V / 48V	200mV		
Temperature	12V / 24V / 48V	≤±1.5%		
Temperature	12V / 24V / 48V	200mV		
Temperature	12V / 24V / 48V	≤±1.5%		

<b>電源</b>		
電源	LAN	
電源	12V / 24V / 48V	40A
電源	12V / 24V / 48V	30A
電源	12V / 24V / 48V	ON / OFF
ON / OFF	12V / 24V / 48V	ON / OFF
PV	12V / 24V / 48V	PV
PV	12V / 24V / 48V	PV
電源	12V / 24V / 48V	10.5
<b>通信</b>		
RS232	12V / 24V / 48V	COM
LAN	12V / 24V / 48V	IP
<b>環境</b>		
電源		
電源		
電源		
電源		
電源		
電源		
電源		
電源		
電源		
<b>騒音</b>		
電源		≤40dB
電源		
電源		
電源		
電源		
<b>外形寸法</b>		
電源		270 * 185 * 90
N.G		3
G.N		3.6
電源		
EMC		EN61000
電源		IP21
<b>環境</b>		
電源		90%RH
電源		3000
電源		-20°C + 40°C
電源		-40°C + 75°C
電源		70kPa



Blue



Green



Upper Computer

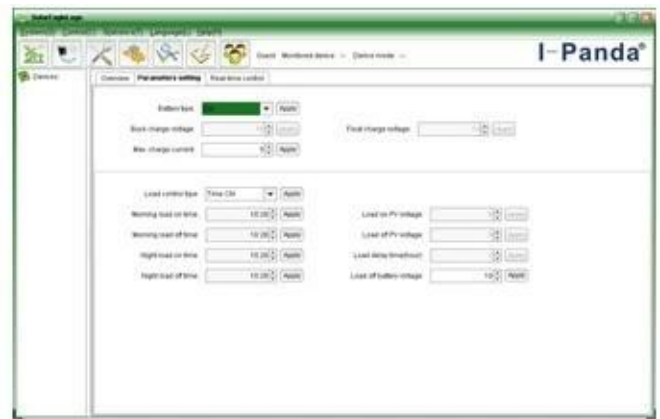


Package

XXXXXXXXXXXXXXXXXXXXXXXXXXXX



The interface of upper computer software working state



The interface of upper computer software parameter setting state



Upper computer software on/off interface and generating capacity record clean interface



The interface of test software working state

MPPT□□□



□□  
[ISO2008](#)  
[ISO2004](#)  
[CE](#)  
[FCC](#)  
[ROHS](#)

□□





