







- 10. RS232 LAN IP · area. And
- 11.
- 12. With
- 13. Adopting 105°C. The
- 14. Compliance 2002/95 / EC
- 15. Equipment + CD-ROM + +
- 16. CE ROHS

MODEL I-P-SMART2-20A / 25A / 30A -SERIES

MODEL I-P-SMART2-20A / 25A / 30A -SERIES	20A	25A	30A	
	12V 24V 48V			
	≤10S			
	500US			
	≥96.5% ≤99%			
PV	≥99%			
INPUT				
MPPT	12V	DC18V DC150V		
	24V	DC34V DC150V		
	48V	DC65V DC150V		
	12V	DC16V		
	24V	DC30V		
	48V	DC60V		
	12V	DC22V		
	24V	DC34V		
	48V	DC65V		
		DC160V		
		DC150		
		DC145V		
PV	12V	286W	357W	429W
	24V	572W	715W	858W
	48V	1144W	1430W	1716W
CHARGE				
	NiCd			
		DC10V DC15V 1V 12V		
	12V / 24V / 48V SYS			
	12V / 24V / 48V SYS			
	20A	25A	30A	
	25A	30A	35A	
	±0.02/°C			
	14.2V-25°C* 0.3			



NO	Qty	Description
1	1	Blue
2	2 PC	Gallow
3	4	
4	1	RJ45 232
5	1	
6	1	
7	2 PC	



Blue



Green

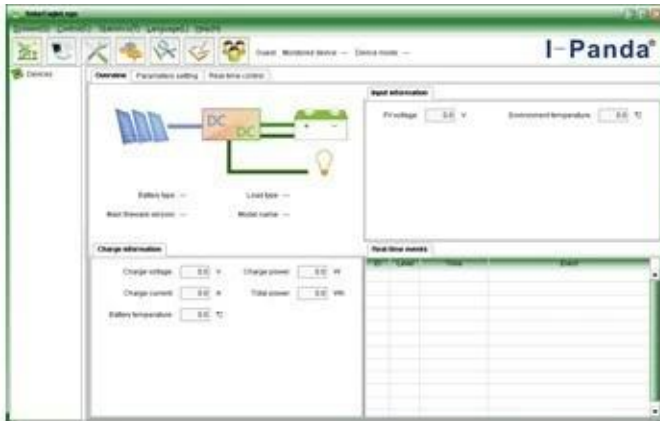


Upper Computer

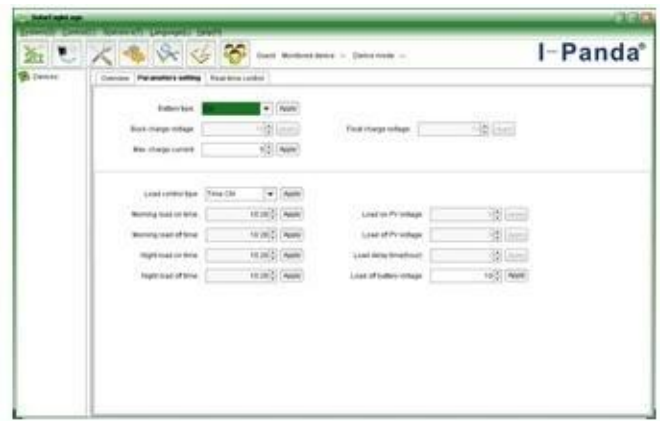


Package

XXXXXXXXXXXXXXXXXXXXXXXXXXXX



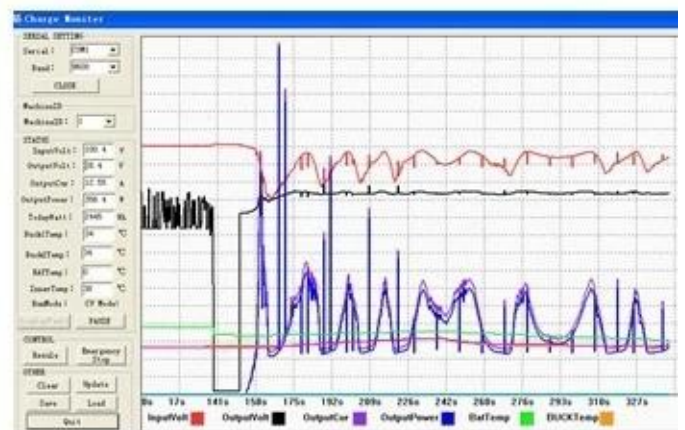
The interface of upper computer software working state



The interface of upper computer software parameter setting state



Upper computer software on/off interface and generating capacity record clean interface



The interface of test software working state

**MPPT**





### 3

3.1

3.2

3.3

### 4

EMS DHL Express 4.1

4.2

4.3

### 5 OEM ODM

5.1 OEM ODM