

MPPT

MPPT [20A/30A](#) 30/60 RS 232 / LAN PV [I-P-TPI2/UPS](#)

MPPT

1

2

3

4

5 [I-P-TPI2](#)

6







- 1 30-60
- 1 95-99
- 2 3
- 2 IP 4 DC
- 3 communication RS232
- 4 100 1

- 1 MPPT 99
- 2 12V / 24V / 48V max PV 3 DC150V
- 4
- 5
- 6. Charge 3 .It
- 7. Discharge ON / OFF PV PV +
- 8. Recommended NiCd
- 9. Most LCD LED PV
- 10. RS232 LAN IP area. And
- 11
- 12. With
- 13. Adopting 105°C. The 10

□□□

14.Compliance□□□□□□□□2002/95 / EC□□□□□□□□□□□□□□□□□□□□□□□□

15.Equipment□□□□□□□□□□+ CD-ROM□□□□□□□□+□□□+□□□□□+□□□□□□□□;

16.CE□ROHS□□□□□□□□□

□□□□□□

MODEL□I-P-SMART2-20A / 25A / 30A -SERIES		20A	25A	30A
□□□□□		□□□□□ □□		
□□□□□		□□□□□□□□□		
□□□□□□□		12V 24V 48V□□□□□		
□□□□□□□□□		≤10S		
□□□□□□□□		500US		
□□□□□		≥96.5□□≤99□		
PV□□□□□□□□□□		≥99□		
INPUT □□				
MPPT□□□□□□□□	12V□□□□□	DC18V□DC150V		
	24V□□□□□	DC34□DC150V		
	48V□□□□□	DC65□DC150V		
□□□□□ □□□□□□	12V□□□□□	DC16V		
	24V□□□□□	DC30V		
	48V□□□□□	DC60V		
□□□□□□□□□□□□	12V□□□□□	DC22V		
	24V□□□□□	DC34V		
	48V□□□□□	DC65V		
□□□□□ DC□□		DC160V		
□□□□□□□□□□		DC150		
□□□□□□□□□□□□		DC145V		
□□□□□ PV□□□□	12V□□□□□	286W	357W	429W
	24V□□□□□	572W	715W	858W
	48V□□□□□	1144W	1430W	1716W
CHARGE □□				
□□□□□□□□□□□		□□□□□□□□□□□□□□NiCd□□□□□□□□□□□□□□□□□□□□□□ □□□		
□□□□□□□□□□□		□□□□	□□□□□□□/□□□□&NBSP□□ DC10V□DC15□□□□□□□□□□□□□□□□ 1□ □12V□□□□□□□□	
□□□□□□□□		12V / 24V / 48V SYS □□□□□□□□□□□□□□		
□□□□□□		12V / 24V / 48V SYS □□□□□□□□□□□□□□□□		
□□□□□□		20A	25A	30A
□□□□□□		25A	30A	35A
□□□□□		±0.02□/°C		
□□□□□		14.2V-□□□□□□25°C□* 0.3		
□□□□□□□□□□□		200mV□		
□□□□□□□□□□□		≤±1.5□		
□□□□□□□□□□□□□□□		200mV□		
□□□□□□		≤±1.5□		
DISCHARGE □□				
□□□□□□□		□□□□□□□□□□□LAN		
□□□□□□		30A		
□□□□□□		420W	840W	1680W

Power	40A*2
Power switch	ON / OFF ON
ON / OFF	ON / OFF
PV	PV
PV	PV
Input	10.5V 1A
PORT	
RS232	COM
LAN	IP TCP
Dimensions	
Weight	
Material	
Surface finish	
Temperature range	95°C
Temperature range	85°C 3A
Power consumption	≤40dB
EMC	EU 2002/95 / EC substances.All 105°C
PHYSICAL	
DxWxH	270 * 185 * 90 mm
N.G	2.1 kg
G.N	2.4 kg
Dimensions	
Dimensions	CE RoHS PSE FCC
EMC	EN61000
Dimensions	IP21
Dimensions	0-90% RH
Dimensions	0-3000mm
Dimensions	-20°C + 40°C
Dimensions	-40°C + 75°C
Dimensions	70-106kPa

OEM/ODM 36V / 72V / 96V

Accessories

NO	Qty	Description
1	1	
2	2 PC	Gallow
3	4	
4	1	RJ45 232
5	1	
6	1	
7	2 PC	



Blue



Green



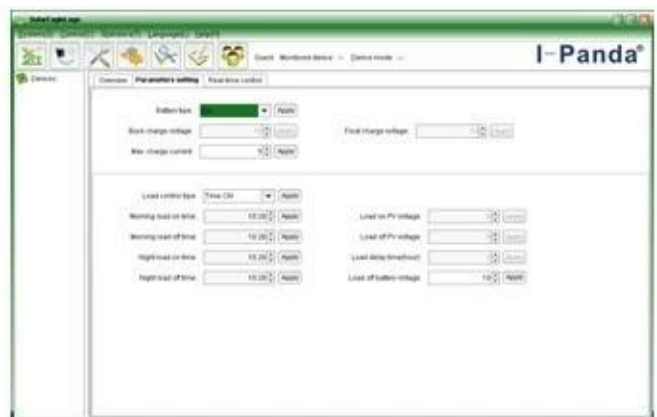
Upper Computer



Package



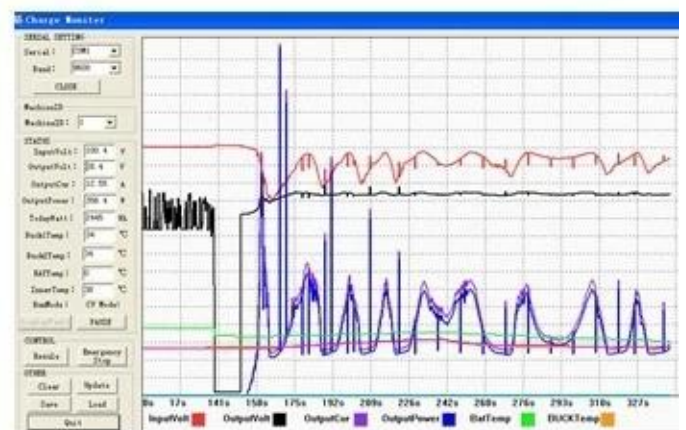
The interface of upper computer software working state



The interface of upper computer software parameter setting state



Upper computer software on/off interface and generating capacity record clean interface



The interface of test software working state

MPPT

3.2 7-15

3.3 25

4

EMS DHL Express 4.1

4.2

4.3

5 OEM ODM

5.1 OEM ODM