

12V / 24V / 48V MPPT 60a







MPPT

- 1. 95%-99% efficiency
- 2. 3-year warranty
- 3. max PV input 300W / 48V, max PV input 1000W / 48V
- 4. DC output 40A
- 5. RS232 communication

MPPT

- 1. MPPT efficiency 99%
- 2. 12V / 24V / 48V
- 3. max PV input 300W DC150V
- 4. RS232
- 5. 3-year warranty
- 6. Charge 3A, 3.5A, 4A, 5A, 6A, 7A, 8A, 9A, 10A, 12A, 15A, 20A, 25A, 30A, 35A, 40A, 45A, 50A, 55A, 60A, 65A, 70A, 75A, 80A, 85A, 90A, 95A, 100A, 110A, 120A, 130A, 140A, 150A, 160A, 170A, 180A, 190A, 200A, 210A, 220A, 230A, 240A, 250A, 260A, 270A, 280A, 290A, 300A, 310A, 320A, 330A, 340A, 350A, 360A, 370A, 380A, 390A, 400A, 410A, 420A, 430A, 440A, 450A, 460A, 470A, 480A, 490A, 500A, 510A, 520A, 530A, 540A, 550A, 560A, 570A, 580A, 590A, 600A, 610A, 620A, 630A, 640A, 650A, 660A, 670A, 680A, 690A, 700A, 710A, 720A, 730A, 740A, 750A, 760A, 770A, 780A, 790A, 800A, 810A, 820A, 830A, 840A, 850A, 860A, 870A, 880A, 890A, 900A, 910A, 920A, 930A, 940A, 950A, 960A, 970A, 980A, 990A, 1000A
- 7. Discharge / OFF
- 8. Recommended NiCd
- 9. Most LCD LED PV
- 10. RS232 LAN IP area. And

- 11. With MPPT
- 12. Adopting 105°C
- 13. Compliance 95°C 2002 / EC
- 14. Equipment + CD-ROM + + +
- 15. CE ROHS

MPPT

| | 40A | 50A | 60A |
|------------------------------------|-----------------------|--------------------|-------|
| I-P-SMART2-40A / 50A / 60A -series | | | |
| MPPT | 3 MPPT | | |
| DC12V / 24V / 48V | DC12V / 24V / 48V | | |
| 12V / 24V / 48Vsystem | DC9V / DC15V | | |
| 24V / 48Vsystem | DC18V / DC30V | | |
| 48Vsystem | DC36V / DC60V | | |
| 12V / 24V / 48Vsystem | ≤10S | | |
| 12V / 24V / 48Vsystem | 500US | | |
| 12V / 24V / 48Vsystem | ≥96.5% ≤99% | | |
| 12V / 24V / 48Vsystem | ≥99% | | |
| MPPT | 12V / 24V / 48Vsystem | DC18V / DC150V | |
| | 24V / 48Vsystem | DC34V / DC150V | |
| | 48V / 48Vsystem | DC65V / DC150V | |
| | 12V / 24V / 48Vsystem | DC16V | |
| | 24V / 48Vsystem | DC30V | |
| | 48V / 48Vsystem | DC60V | |
| | 12V / 24V / 48Vsystem | DC22V | |
| | 24V / 48Vsystem | DC34V | |
| | 48V / 48Vsystem | DC65V | |
| DC | 12V / 24V / 48Vsystem | DC160V | |
| | 12V / 24V / 48Vsystem | DC150 | |
| | 12V / 24V / 48Vsystem | DC145V | |
| PV | 12V / 24V / 48Vsystem | 570W | 700W |
| | 24V / 48Vsystem | 1130W | 1400W |
| | 48V / 48Vsystem | 2270W | 2800W |
| | 12V / 24V / 48Vsystem | NiCd | |
| | 12V / 24V / 48Vsystem | | |
| | 12V / 24V / 48Vsystem | | |
| | 12V / 24V / 48Vsystem | 14.6V | |
| | 24V / 48Vsystem | 29.2V | |
| | 48V / 48Vsystem | 58.4V | |
| | 12V / 24V / 48Vsystem | 40A | 60A |
| | 12V / 24V / 48Vsystem | 44A | 55A |
| | 12V / 24V / 48Vsystem | 40A | 50A |
| | 12V / 24V / 48Vsystem | ±0.02% / °C | |
| | 12V / 24V / 48Vsystem | 14.2V / 25°C * 0.3 | |
| | 12V / 24V / 48Vsystem | 200mV | |
| | 12V / 24V / 48Vsystem | ≤±1.5% | |
| | 12V / 24V / 48Vsystem | 200mV | |
| | 12V / 24V / 48Vsystem | ≤±1.5% | |
| | LAN | | |
| | 12V / 24V / 48Vsystem | 40A | |
| | 12V / 24V / 48Vsystem | 30A * 2 | |
| | 12V / 24V / 48Vsystem | ON / OFF ON | |
| ON / OFF | 12V / 24V / 48Vsystem | ON / OFF | |
| PV | 12V / 24V / 48Vsystem | PV / PV | |
| PV / PV | 12V / 24V / 48Vsystem | PV / PV | |
| | 12V / 24V / 48Vsystem | 10.5% | |
| RS232 | 12V / 24V / 48Vsystem | COM | |
| LAN | 12V / 24V / 48Vsystem | IP / TCP | |
| | | | |
| | | | |
| | | | |
| | | | |
| | 95°C | | |
| | 85°C / 3A | | |
| | ≤40dB | | |
| | EV / 105°C | | |
| | 95°C 2002 / EC | | |
| DxWxH | 270 * 185 * 90 | | |
| N.G | 3 | | |
| G.N | 3.6 | | |
| | CE / RoHS / PSE / FCC | | |
| EMC | EN61000 | | |
| | IP21 | | |
| | 090 RH | | |

| | |
|-------|--------|
| 0 | 3000 |
| -20°C | + 40°C |
| -40°C | + 75°C |
| 70 | 106kPa |

OEM ODM

NO

| NO | | |
|----|------|----------|
| 1 | 1 | |
| 2 | 2 PC | |
| 3 | 2 PC | Gallow |
| 4 | 4 | |
| 5 | 1 | RJ45 232 |
| 6 | 1 | |
| 7 | 1 | |
| 8 | 2 PC | |



Blue



Green



Upper Computer Software



Parts



Package


SolarEagle

System(S) Control(C) Statistics(T) Language(L) Help(H)

Guest Monitored device: --- Device mode: ---

Devices

Overview Parameters setting Real-time control



Input information

PV voltage: 0.0 V Environment temperature: 0.0 °C

Battery type: --- Load type: ---
Main firmware version: --- Model name: ---

Charge information

Charge voltage: 0.0 V Charge power: 0.0 W
Charge current: 0.0 A Total power: 0.0 Wh
Battery temperature: 0.0 °C

Real-time events

| ID | Level | Time | Event |
|----|-------|------|-------|
| | | | |
| | | | |
| | | | |
| | | | |
| | | | |
| | | | |
| | | | |
| | | | |
| | | | |
| | | | |

SolarEagleLogo

System(S) Control(C) Statistics(T) Language(L) Help(H)

Guest Monitored device: --- Device mode: ---

I-Panda®

Devices

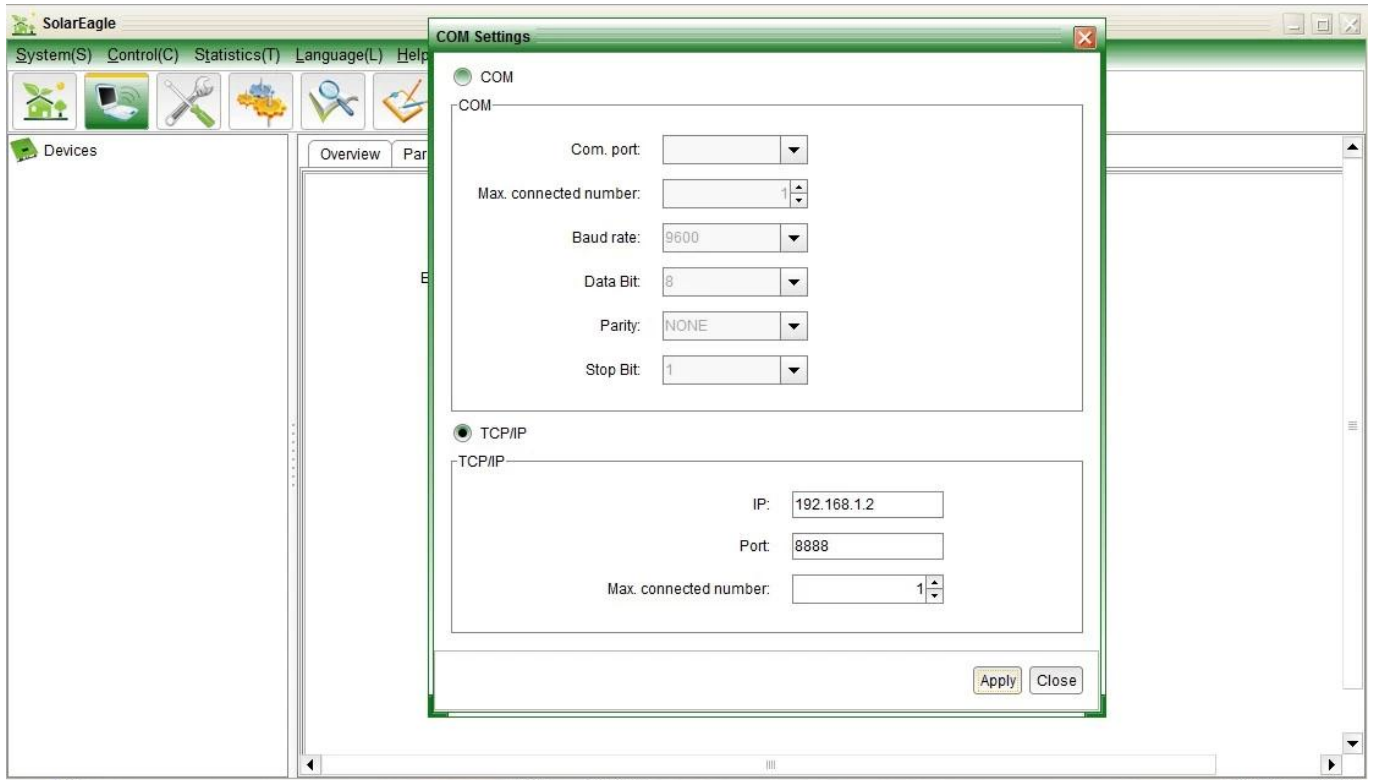
Overview Parameters setting Real-time control

Battery type: Vented
 Buck charge voltage: Vented
 Max. charge current: Sealed
 (Dropdown menu: Sealed, Nicd, Customer)

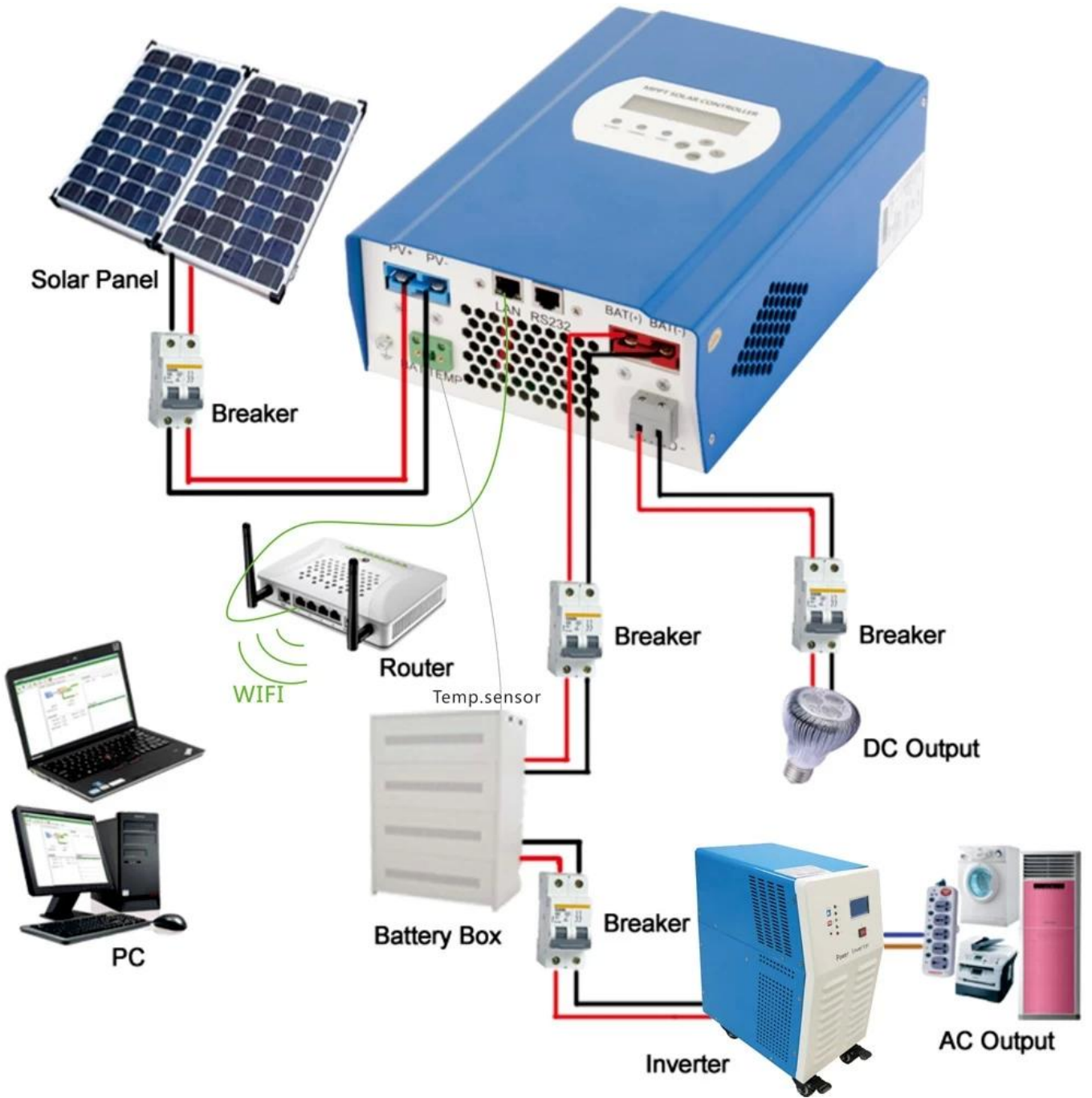
Float charge voltage: 10

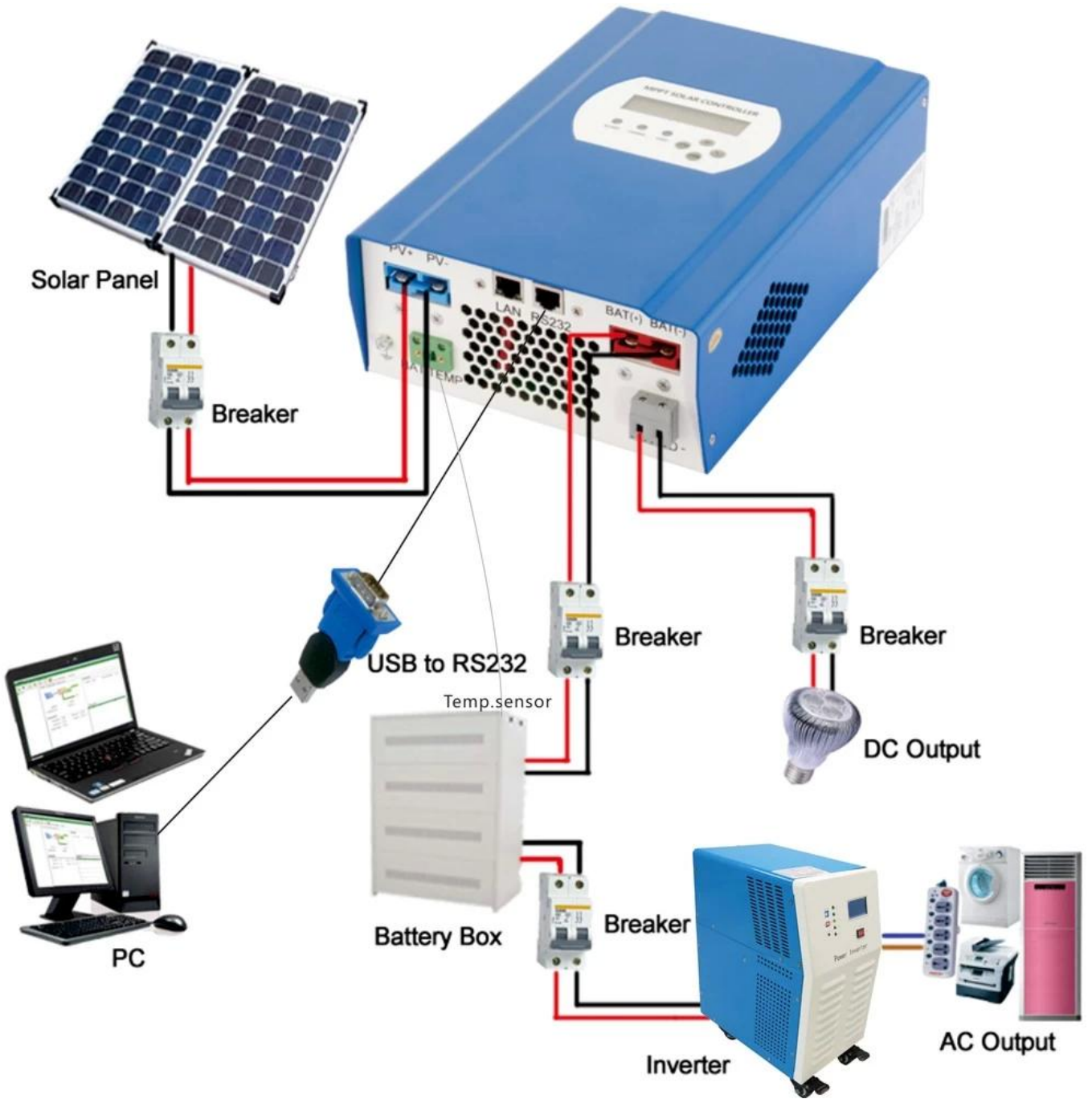
Load control type: Time Ctrl
 Morning load on time: 10:40
 Morning load off time: 10:40
 Night load on time: 10:40
 Night load off time: 10:40

Load on PV voltage: 0
 Load off PV voltage: 0
 Load delay time(hour): 1
 Load off battery voltage: 10



MPPT□□





R&D; D

[R&D; D](#)

1

1.1

2

2.1

2.2

2.3