

□□□□







MPPT

- 1. 95%-99% efficiency
- 2. 3-year warranty
- 3. IP65 protection
- 4. RS232 communication
- 5. 100% efficiency

MPPT

- 1. 99% efficiency
- 2. 12V / 24V / 48V
- 3. max PV 3 DC150V
- 4. 4
- 5. 3
- 6. Charge 3 .It
- 7. Discharge ON / OFF PV PV +
- 8. Recommended NiCd
- 9. Most LCD LED PV
- 10. RS232 LAN IP area. And


SolarEagle

System(S) Control(C) Statistics(T) Language(L) Help(H)

Guest Monitored device: --- Device mode: ---

Devices

Overview Parameters setting Real-time control



Input information

PV voltage: 0.0 V Environment temperature: 0.0 °C

Battery type: --- Load type: ---
Main firmware version: --- Model name: ---

Charge information

Charge voltage: 0.0 V Charge power: 0.0 W
Charge current: 0.0 A Total power: 0.0 Wh
Battery temperature: 0.0 °C

Real-time events

ID	Level	Time	Event

SolarEagleLogo

System(S) Control(C) Statistics(T) Language(L) Help(H)

Guest Monitored device: --- Device mode: ---

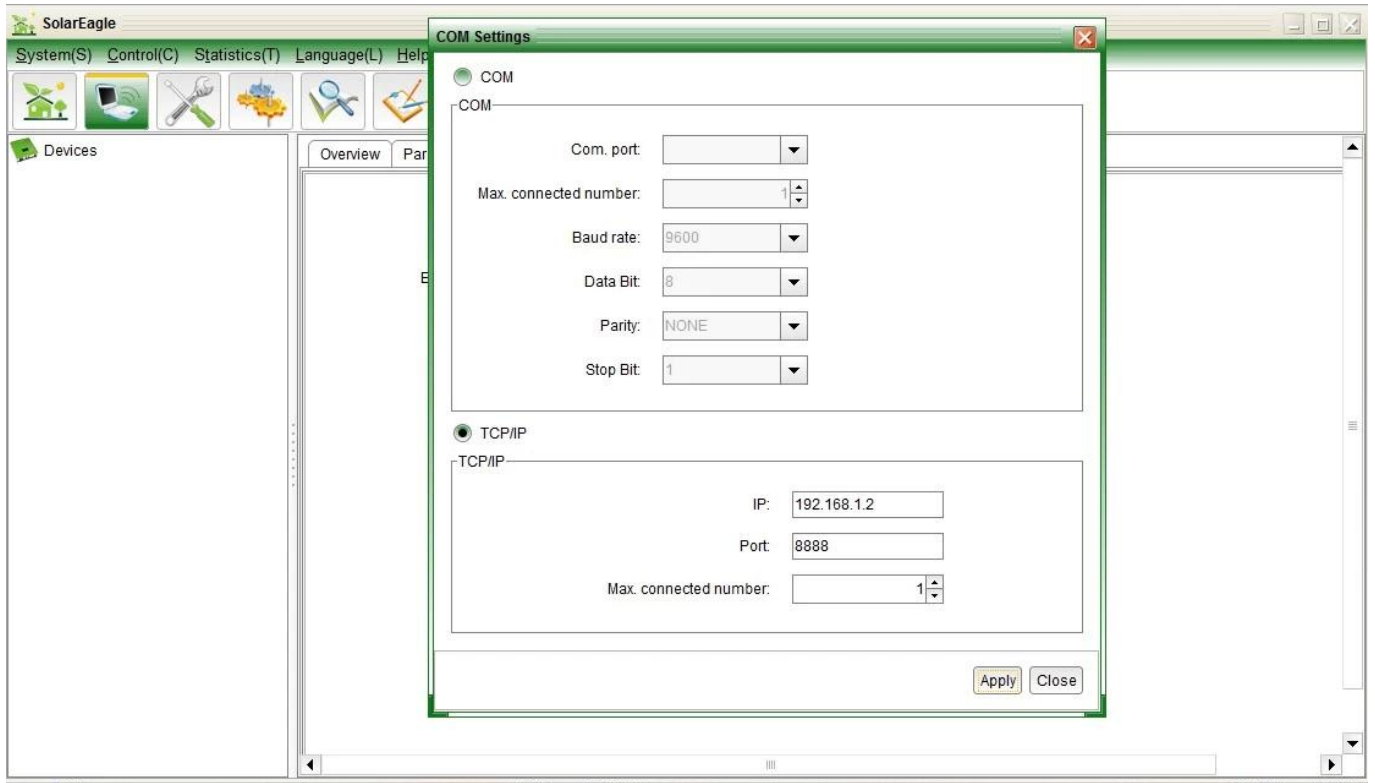
I-Panda®

Devices

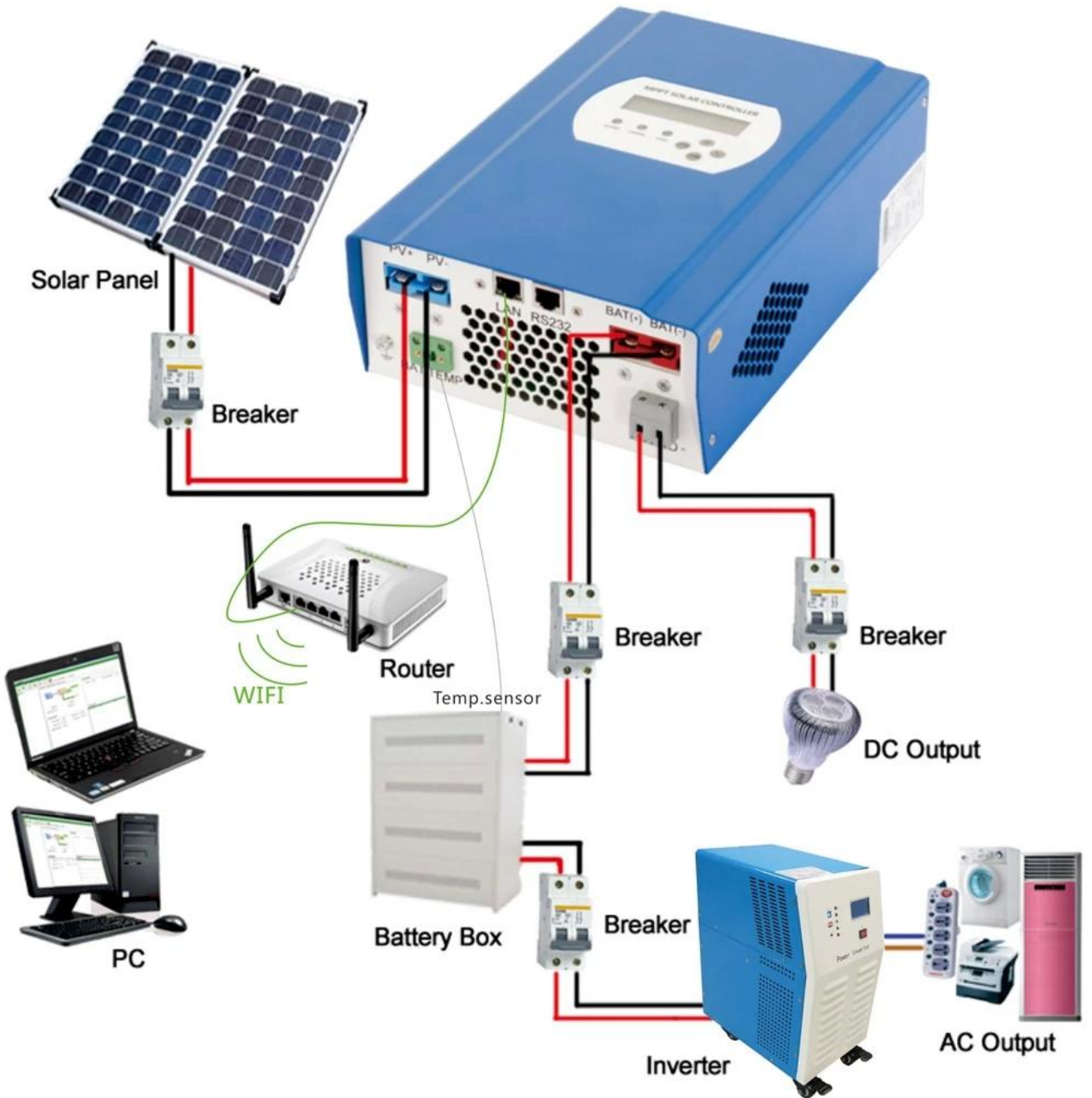
Overview Parameters setting Real-time control

Battery type:
 Buck charge voltage:
 Max. charge current:
 Float charge voltage:

Load control type:
 Morning load on time:
 Morning load off time:
 Night load on time:
 Night load off time:
 Load on PV voltage:
 Load off PV voltage:
 Load delay time(hour):
 Load off battery voltage:



MPPT□□



R&D; D

[R&D; D](#)

1

1.1

2

2.1

2.2

2.3

3

3.1

3.2

4

4.1

4.2

4.3

4.4

□□□□□□□4.3□□□□□