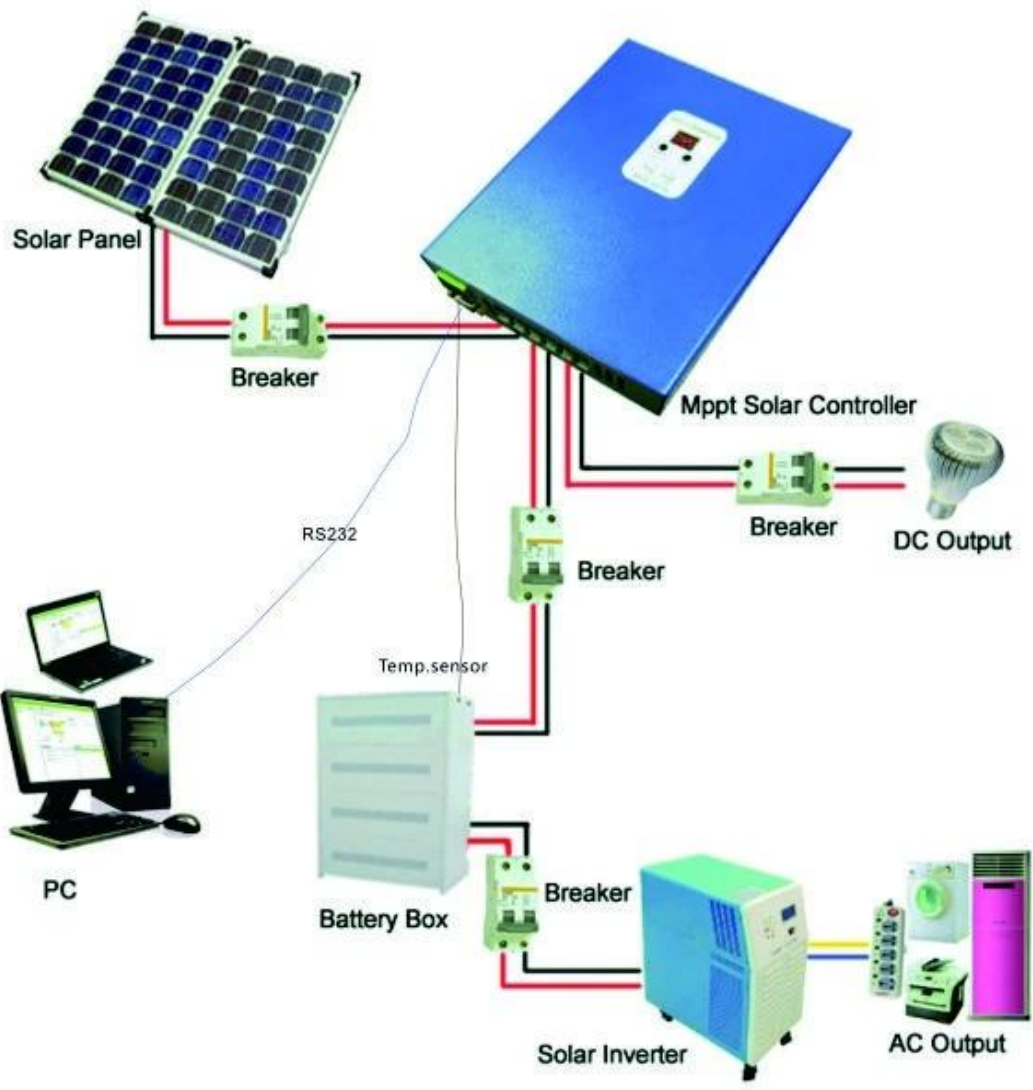
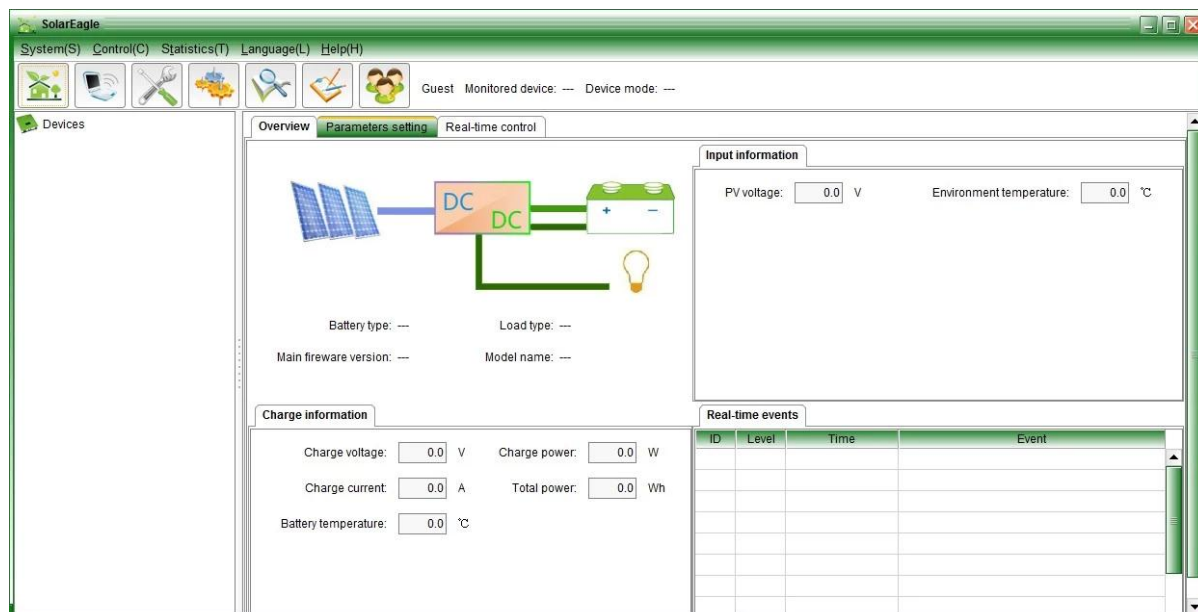




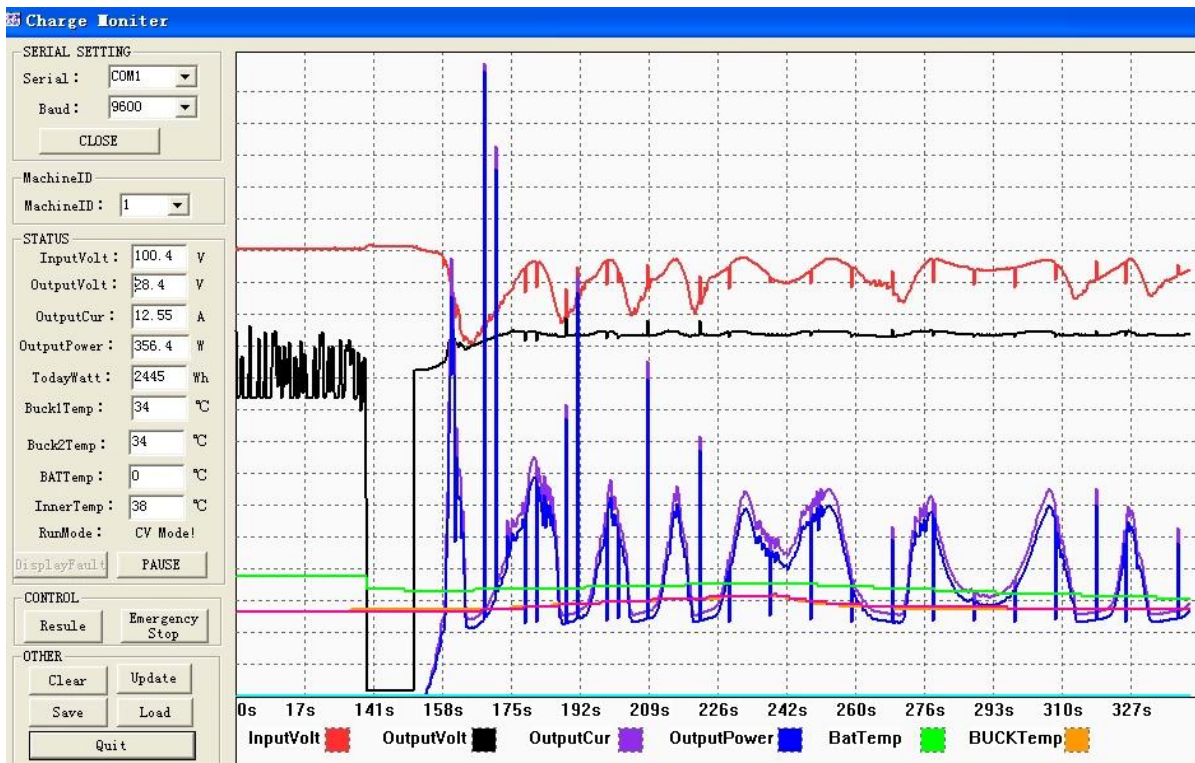
# I-P-ESmart-Swries System



□□□□□□□□□□□□□□□□□□□□□□□□



□□□□□□□□□□□□□□□□□□



□□□□□

MPPT□□□□□□□□□□□□□□□□		25A	30A	40A
I-P-E-SMART-12V / 24V / 48V□□□□				
□□□□	MPPT□□□□□□□□□□			
□□□□	□□□□□□□□MPPT□□□□□□□□□□			
□□□□□□□□	DC12V / 24V / 48V	□□□□		
□□□□	12V□□□□	DC9V□DC15V		
□□□□	24V□□□□	DC18V□DC30V		
□□□□□□□□	48V□□□□	DC36V□DC60V		
□□□□□□□□	12V / 24V / 48V□□□□	≤3S		
□□□□□□□□	12V / 24V / 48V□□□□	500US		
MPPT□□	12V / 24V / 48V□□□□	≥96.5□□≤99□		
□□□□				
MPPT□□□□□□	12V□□□□	DC14V□DC100V		
	24V□□□□	DC30□DC100V		
	48V□□□□	DC60□DC100V		
□□□□	12V□□□□	DC14V		
□□□□□□	24V□□□□	DC30V		
	48V□□□□	DC60V		
□□□□	12V□□□□	DC18V		
□□□□□□□□	24V□□□□	DC34V		
	48V□□□□	DC65V		
□□□□□□□□□□	12V / 24V / 48V□□□□	DC110		
□□□□□□□□□□	12V / 24V / 48V□□□□	DC100V		
□□□□□□□□	12V□□□□□□W□	355	426	568
□□□□□□□□	24V□□□□W□	710	852	1136
	48V□□□□□□W□	1420	1704	2272
<b>CHARGE CHRECTRESTICS</b>				
□□□□□□□□□□□□				
□□□□□□□□□□	12V / 24V / 48V□□□□	□□□□□□□□□□□□□□□□□□□□		
□□□□□□		□□□□□□□□□□□□□□□□□□□□		

12V / 24V / 48V			
12V / 24V / 48V			
12V / 24V / 48V	25A	30A	40A
12V / 24V / 48V	30A	35A	45A
12V / 24V / 48V	±0.02%/°C		
12V / 24V / 48V	14.2V-25°C* 0.3		
12V / 24V / 48V	200mV		
12V / 24V / 48V	≤±1.5%		
<b>LED</b>			
	10.5V~11V		
	30A		
	PV		
	PC		
<b>LED</b>			
LED	LOAD		
PC	RS232		
<b>ENVIRONMENTAL</b>			
	≤40dB		
	EU		
	FCC RoHS CE		
<b>MECHANICAL</b>			
D×H	205 * 168 * 60		
D×H	265 * 196 * 110		
N.G	1.8		
G.N	2		
	IP25		
<b>OPERATING</b>			
	0~90%RH		
	0~3000		
	-20°C+ 50°C		
	-40°C+ 75°C		
	70~106kPa		

•





中外运敦豪







