

MPPT 12V / 24V / 48V 20A



MPPT E-SMART MPPT 12V / 24V / 48V 20A 30A 60A PWM RS232 batteries.it

1. MPPT 12V / 24V / 48V 20A 30A 60A PWM
2. DC 12V / 24V / 48V
3. DC 100V
4. MPPT
5. PV
6. 4
7. PV
8. RS232
- 9.
10. CE RoHS approved. We
11. 2; 3 10

MPPT I-P-E-SMART-12V / 24V / 48V	15A	20A	25A	30A	40A
MPPT					
MPPT					
DC 12V / 24V / 48V					
12V	DC9V	DC15V			
24V	DC18V	DC30V			
48V	DC36V	DC60V			
12V / 24V / 48V	≤3S				
12V / 24V / 48V	500US				
MPPT	12V / 24V / 48V	≥96.5%	≤99%		

MPPT	12V	DC14V	DC100V			
	24V	DC30V	DC100V			
	48V	DC60V	DC100V			
	12V	DC14V				
	24V	DC30V				
	48V	DC60V				
	12V	DC18V				
	24V	DC34V				
	48V	DC65V				
	12V / 24V / 48V	DC110				
	12V / 24V / 48V	DC100V				
	12V	213	284	355	426	568
	24V	426	568	710	852	1136
	48V	852	1136	1420	1704	2272

CHARGE CHRECTRESTICS

	12V / 24V / 48V					
	12V / 24V / 48V					
	12V / 24V / 48V	15A	20A	25A	30A	40A
	12V / 24V / 48V	20A	25A	30A	35A	45A
	12V / 24V / 48V	±0.02/°C				
	12V / 24V / 48V	14.2V-25°C* 0.3				
	12V / 24V / 48V	200mV				
	12V / 24V / 48V	≤±1.5				

ENVIRONMENTAL

		10.5V; 11V;				
		30A				
		PV				
		PC				

COMMUNICATIONS

LED						
LED						
		RS232				

MECHANICAL

ENVIRONMENTAL

		≤40dB				
		CE \ FCC \ RoHS				

ENVIRONMENTAL

		205 * 168 * 60				
		265 * 196 * 110				
N.G	KG	1.8				
G.N	KG	2				
		IP25				

□□	0□90□RH□□□□
□□	0□3000□
□□□□	-20°C□+ 50°C
□□□□	-40°C□+ 75°C
□□	70□106kPa

□□□□

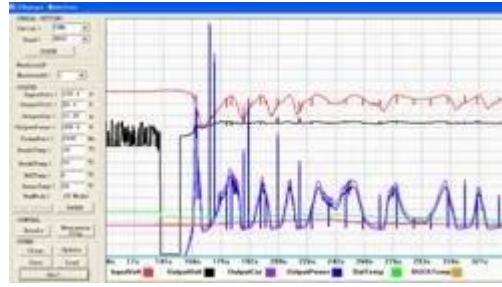




PC

1.

2. PC software interface and data analysis



PC software interface

1. ENTER1 shows 13.5V; ENTER1 shows 2.1;
 2. ENTER2 shows 22.5A; ENTER2 shows 2.2;
- DC power supply



MPPT CONTROLLER



CHARGE



LOAD



CHG. VOL.
BAT. TYPE



CHG. CUR.
OUTPUT. TYPE

□□
□□□□□□

DC FIRST SYSTEM



□□□□□□□□

