

## Introduction

This is a [solar charge controller 20A ~30A](#) that have automatic max. power point tracking function with high efficiency that almost 30%~60% higher than traditional charge controller. It also features the functions of system voltage auto recognition, wide rang of PV input ,charge for all kinds of battery,automatic discharge control,RS 232 / LAN communication function and so on. It is very high-end product for solar market with its best partner [I- P-TPI2 model Inverter/Charger/UPS.](#)

## Application

1. Industrial, commercial, household off grid solar energy generation system
2. Movable off grid solar energy generation system
3. Communication base stations
4. New energy education business
5. Solar Monitoring System
6. Solar Street Lighting System

## Reasons to choose

1. 30%-60% solar panels saved
  - 1) Conversion efficiency 95%-99%, take most from solar panels
  - 2) Charge for all kinds of batteries, 3 charge stage to protect battery. Reduce consumption, cost saved.
2. Data monitor and set. Parameters from solar panels like charge current/voltage and IP gate address, total generation power, etc can be showed. 4 kinds DC load control, automaticly save ernaly both from human and solar.
3. Lan commucation and RS232 port.
4. Software to monitor 100pcs equipments at the same time on one screen on a computer.

## Features

- 1.MPPT charge mode,conversion efficiency up to 99%
- 2.12V/24V/48V system auto recognize;
- 3.Wide range of PV input with max. is DC150V.
- 4.Memory function,Save setting function: date,time,generating capacity record and so on .
- 5.Charge mode: 3 stages (fast charge,constant charge ,floating charge) .It prolongs service life of the batteries .
- 6.Discharge mode: ON/OFF mode, double time control mode,PV voltage control mode ,PV voltage+time delay mode and so on .
- 7.Selected battery types: sealed lead acid, vented, gel, NiCd battery. Other types of the batteries can also be defined.
- 8.Most information could be provide by LCD and LED like: model no.,PV input voltage,battery type,battery

voltage,charging current,charging power,working status and so on. Also customer's information like company name,website and logo can be added into Solar Eagle software.

9.RS232 and LAN communication port. IP and Gate address could be user define it satisfy global area.And communication protocol can be provided to manage all information.

10.The upper computer software is displayed in 11 languages, it could show work status and be set parameters of the discharge system.

11.With intelligent design,the device can be upgraded online lifelong.

12.Compliance with the 2002/95/EC environment protecting demand,doesn't include the Cadmium, hydride and fluoride etc material

13.Equipment integrity: controller + CD-ROM(microcomputer software) + communication wire + temperature sensing wire + Anderson terminals;

14.CE,ROHS certifications approved.

15.2 years warranty. The service life is designed to use for 10 years in theory. Extended 3~10 years warranty service also can be provided.

### Technical Specification:

MODEL:I-P-SMART2-20A/25A/30A -SERIES	20A	
Charge Mode	Maximum Power Point Tracking	
Discharge Mode	Intelligent control	
System Type	12V 24V 48V Automatic recognition	
Soft Start Time	≤10S	
Dynamic Response Recovery Time	500us	
Conversion Efficiency	≥96.5%, ≤99%	
PV Modules Utilization Rate	≥99%	
INPUT CHARACTERISTICS		
MPPT Working Voltage and Range	12V system	DC18V~DC150V
	24V system	DC34~DC150V
	48V system	DC65~DC150V
Low Voltage Input Protection Point	12V system	DC16V
	24V system	DC30V
	48V system	DC60V
Low Voltage Input Recovery Point	12V system	DC22V
	24V system	DC34V
	48V system	DC65V
Max. DC Voltage	DC160V	
Input Overvoltage Protection Point	DC150	
Input Overvoltage Recovery Point	DC145V	
Max. PV Power	12V system	286W
	24V system	572W
	48V system	1144W
CHARGE CHARACTERISTICS		

Selectable Battery Types	Sealed lead acid, vented, Gel, NiCd battery(Default type is GEL battery)
Other types of Battery Setting	Constant charge
	Floating charge
Battery Type Setting	12V/24V/48V SYS
Charge Type	12V/24V/48V SYS
Rated Output Current	20A
Current-limiting Protection	25A
Temperature Factor	±0.02%/°C
Temperature Compensation	14.2V-(The highest temperature-25°C)*0.3
Output Ripples(peak)	200mV
Output Voltage Stability Precision	≤±1.5%
Charge voltage Peak-Peak Ripple	200mV
Charger voltage accuracy	≤±1.5%
DISCHARGE CHARACTERISTICS	
Setting Control	Controller or LAN
Max discharge current	30A
Max discharge power	420W
Discharge protection	fuse 40A*2
Double-time control	On in morning ,off in morning / On in night ,off in night
ON / OFF mode	ON / OFF
PV voltage control	PV voltage on,PV voltage off
PV voltage / time delay control	PV voltage on,time delay off
Discharge voltage protection	Output off when it under setting voltage; Factory set is 10.5 .( Note : set based on 1 battery )
COMMUNICATION PORT	
RS232 Communication	Chose COM communication
LAN Communication	Set IP and Gate address for controller and solar eagle ;Then chose TCP communication
PROTECTIONS	
Input Low Voltage Protection	Check the in/output characteristics
Input Overvoltage Protection	
Input Polarity Reversal Protection	
Output Overvoltage Protection	
Output Polarity Reversal Protection	
Short-circuit Protection	Recover after eliminating the Short-circuit fault, no problem for long term Short-circuit
Temperature Protection	95°C
Temperature protection	Above 85°C,decrease the output power, decrease 3A per degree.
OTHER PARAMETERS	
Noise	≤40dB
Thermal methods	Forced air cooling, fan speed rate regulated by temperature, when inner temperature is too low, fan ran slowly or stop; when controller stop working, fan also stop ran.
Environment Protection	World brand raw materials. Compliance with EU standards. Meet the 2002/95/EC without cadmium hydride, fluoride, peculiar smell and toxic substances.All rated temperature of electrolytic capacitors not less than 105°C

PHYSICAL	
Measurement DxWxH (mm)	270*185*90
N.G(kg)	2.1
G.N(kg)	2.4
Color	Blue/Green (optional)
Safety	CE, RoHS, PSE,FCC
EMC	EN61000
Type of Mechanical Protection	IP21
ENVIRONMENT	
Humidity	0~90%RH ( no condense)
Altitude	0~3000m
Operating Temperature	-20°C ~ +40°C
Storage Temperature	-40°C ~ +75°C
Atmospheric Pressure	70~106kPa



Blue



Green



Upper Computer

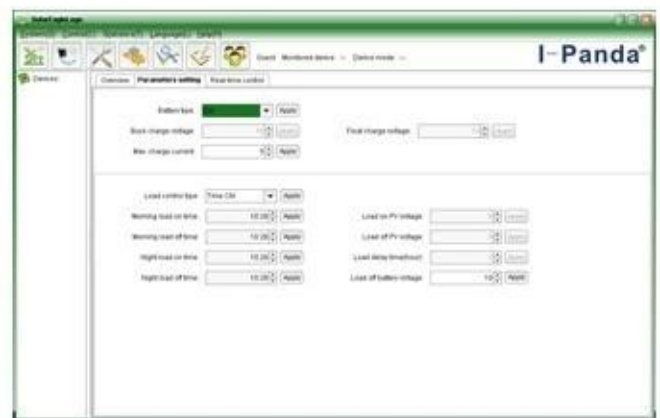


Package

**Upper Computer Software and Test Software**



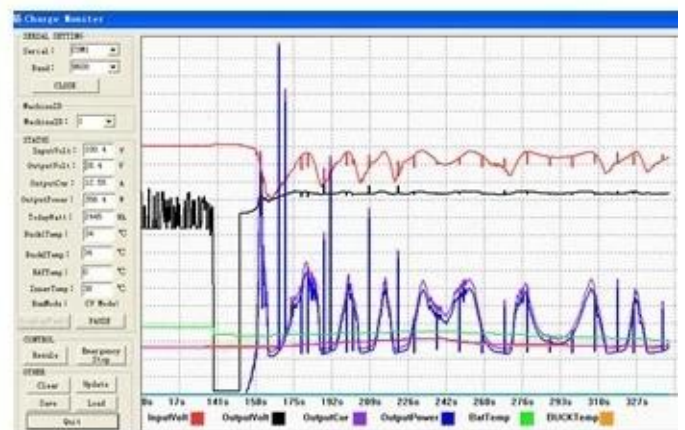
The interface of upper computer software working state



The interface of upper computer software parameter setting state



Upper computer software on/off interface and generating capacity record clean interface



The interface of test software working state

## MPPT Connection



## Certificates

[ISO2008](#)

[ISO2004](#)

[CE](#)

[FCC](#)

[ROHS](#)

## Service and Contact

### 1. Warranty

1.2 years warranty, lifelong technical assistance.

### 2. Conditions and Terms

2.1 The warranty starts from the delivery date from our factory.

2.2 During the warranty, any defective product will get repaired or replaced for free.

2.3 The warranty is unavailable for those products which are broken by the violence or the carelessness or repaired or altered without the authorization.

### 3. Lead Time

- 3.1 Sample orders will be delivered from our factory within 5-7 working days.
- 3.2 General orders will be delivered from our factory within 7-15 working days.
- 3.3 Big orders will be delivered from our factory within 25 working days at most.

#### **4. Shipment**

- 4.1 By EMS,DHL,FedEx or other express.
- 4.2 By our forwarding agent(by air or by sea).
- 4.3 By your own forwarding agent.

#### **5. OEM and ODM**

- 5.1 This page shows basic data, we can provide OEM, ODM service for you.