

Power	Power consumption: 10.5W (max) 1W (typical)
Interface	
RS232	1 COM
LAN	1 IP (RJ45) 1 TCP
Environment	
Operating temperature	0°C / 50°C
Storage temperature	-20°C ~ 70°C
Humidity	5% ~ 95% RH (non-condensing)
Shock	10g, 10ms, 1000 cycles
Vibration	0.5g, 10~200Hz
EMC	EN61000-3-2, EN61000-3-3
Safety	
EMC	EN61000-3-2, EN61000-3-3
RoHS	RoHS compliant
CE	CE mark
Dimensions	
Dimensions (DxWxH)	270 * 185 * 90 mm
N.G.	2.1
G.N.	2.4
Weight	0.5kg
EMC	EN61000-3-2, EN61000-3-3
IP	IP21
Performance	
Accuracy	±0.1% RH
Resolution	0.1% RH
Operating temperature	-20°C ~ +40°C
Storage temperature	-40°C ~ +75°C
Humidity	70% ~ 106kPa



Blue



Green



Upper Computer

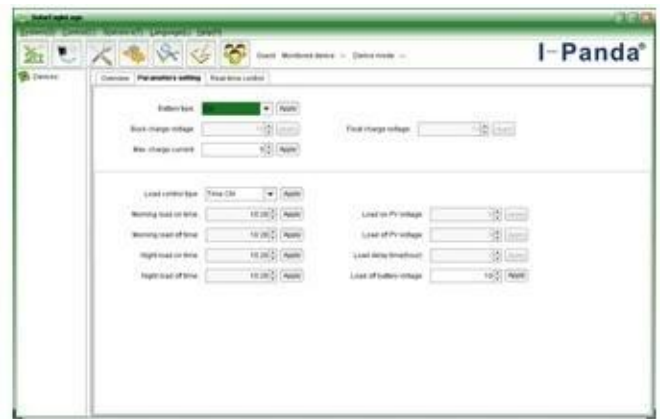


Package

0000000000



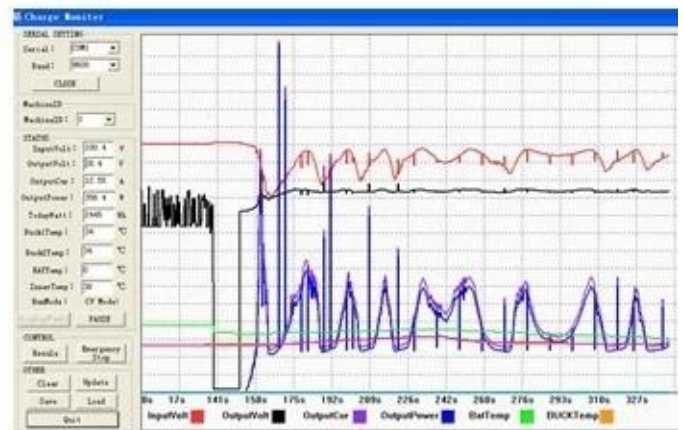
The interface of upper computer software working state



The interface of upper computer software parameter setting state



Upper computer software on/off interface and generating capacity record clean interface



The interface of test software working state

MPPT



-
- [ISO2008](#)
- [ISO2004](#)
- [CE](#)
- [FCC](#)
- [ROHS](#)

□□□□

- 1.□□
- 1.2□□□□□□□□□□□□
- 2.□□□□
- 2.1□□□□□□□□□□□□
- 2.2□□□□□□□□□□□□□□□□□□
- 2.3□□□□□□□□□□□□□□□□
-
- 3.□□□
- 3.1□□□□□□□□□□□□5-7□□□□□□□□
- 3.2□□□□□□□□□□□□7-15□□□□□□□□

3.3 25

4.

4.1 EMS DHL

4.2

4.3