

DC 160V		DC160V		
DC150		DC150		
DC145V		DC145V		
PV	12V	286W	357W	429W
	24V	572W	715W	858W
	48V	1144W	1430W	1716W

CHARGE

GEL		GEL		
DC10V ~ DC15		DC10V ~ DC15		
12V/24V/48V SYS		12V/24V/48V SYS		
20A		25A	30A	
25A		30A	35A	
± 0.02%		± 0.02%		
14.2V (0.3 * (°C 25		14.2V (0.3 * (°C 25		
200mV		200mV		
≤ ± 1.5%		≤ ± 1.5%		
200mV		200mV		
≤ ± 1.5%		≤ ± 1.5%		

LAN

LAN		LAN		
30A		30A		
420W		840W	1680W	
40A * 2		40A * 2		
ON / OFF		ON / OFF		
PV		PV		
PV /		PV /		
10.5)		10.5)		

COMMUNICATION PORT

RS232		COM		
LAN		IP TCP		

TEMPERATURE

95 °C		95 °C		
85 °C		85 °C		
3A		3A		



Blue



Green

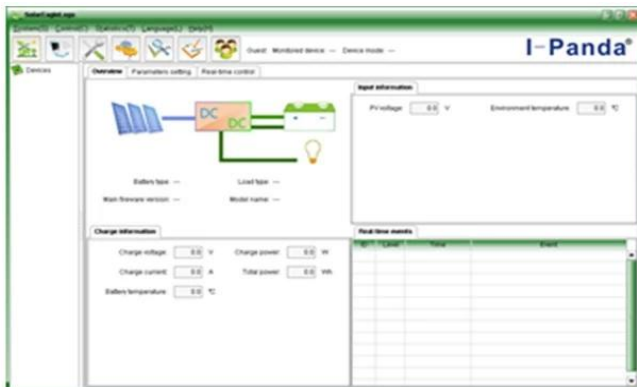


Upper Computer

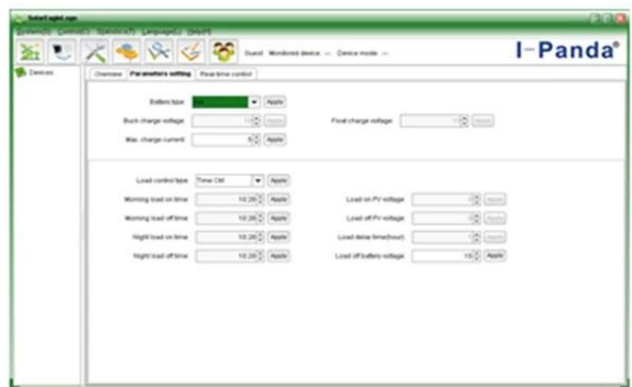


Package

□□□□□□□□ □□□□□□ □□□□□□□□□□ □□□□□□ □□□□□□:



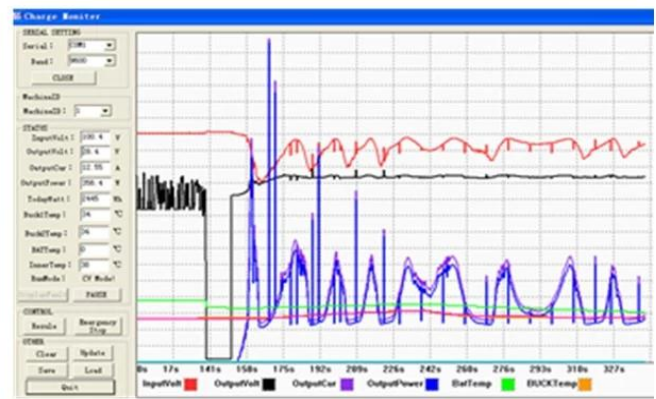
The interface of upper computer software working state



The interface of upper computer software parameter setting state



Upper computer software on/off interface and generating capacity record clean interface



The interface of test software working state

